

Wooranna Park's Wonderings



Wednesday 20 March 2024

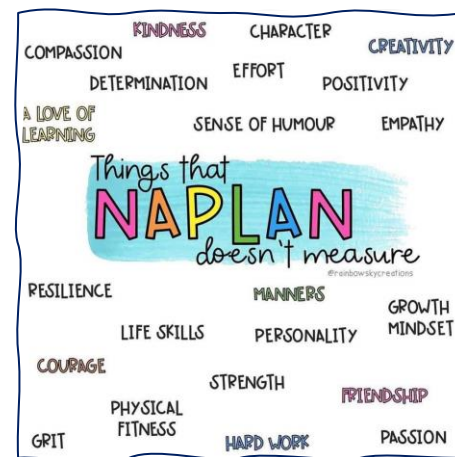
Hi everyone,

Last week our grade three and five students commenced the National Assessment Program–Literacy and Numeracy (NAPLAN). This assessment is an everyday part of the school calendar. NAPLAN tests skills in literacy and numeracy that are developed over time, through the school curriculum, such as reading, writing, spelling and numeracy.

NAPLAN is made up of online tests in the four areas of:

- Reading
- Writing
- Language Conventions (spelling, grammar & punctuation)
- Numeracy.

I am confident that our students have given their best effort with these assessments. It is now our time as the adults in their world to recognise that this test will only be able to give us some information, as there are certain things that can't be measured on a test, such as your persistence, leadership and creativity!



Crazy Hair Day!

A big thank you to everyone that brought along a gold coin to support Jethro's World's Greatest Shave quest! Our proceeds have gone to the Leukaemia Foundation, while Jethro's long hair has been bundled up to make a wig for a young person. This is such a very generous act on Jethro's behalf and we commend him on the courage he has shown in support of a bigger cause.

Families that want to make an additional donation can do so at before the end of March: <http://my.leukaemiafoundation.org.au/JethroBatteselmrei>

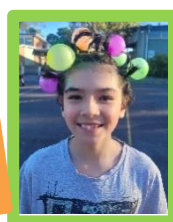


There is nothing more beautiful than someone who goes out of their way to make life beautiful for others. You were simply incredible. Please keep it up with the exceptional volunteer work.

You are doing a wonderful thing. So impressive Jethro.



Great job Jethro!



More photos can be found on [our website](#).

STEM Festival

Today, from 3:40pm till 4:40pm, we will be hosting a STEM Festival. As a family we encourage you to visit each classroom to inspire each other in our STEM pursuits as we work together to build a brighter future!

Students will need to be accompanied by an adult as this is an after school activity. We hope to see you there!



Harmony Day

Tomorrow we will be celebrating Harmony Day. Everyone is encouraged to wear their **traditional/cultural costume or any orange-coloured clothing** to represent the colour of harmony.

Annual General Meeting

On Tuesday 26 March at 6:00pm we will host our **Annual General Meeting** which will then be followed by our first School Council meeting for 2024. As is the case for every School Council meeting, you are all welcome to attend.

URSTRONG

This year we have introduced URSTRONG into the Wooranna Park Primary School's curriculum.



URSTRONG's whole-school friendship strategy has improved the social climate in schools around the world, connecting over a million kids, parents/carers and teachers with a common language of friendship. We are proud to be a URSTRONG School and we are committed to empowering your children with friendship skills.

You are invited to take advantage of a [FREE Parent Membership](#) to access hundreds of resources – including an 8 session video series. This will allow you to learn the same language and strategies being taught in the classroom through the Friendology 101 curriculum.

We hope that as a URSTRONG Family, you will reinforce the important messages of empowerment, self-compassion and kindness at home.

As a next step, we would recommend:

- [Click here](#) to view an overview of URSTRONG.
- Activate your [FREE Parent Membership](#) and explore all the resources available to your family.
- Explore the hundreds of resources available to you!

We believe that empowering our students with these skills will create a culture of kindness at our school and we hope that together, we can support your children to have healthy, feel-good friendships.

Be You - Family Survey

This year we are working alongside Be You to promote positive mental health and wellbeing with our students, staff and families. This term senior school students and staff completed an anonymous survey to inform us on how we can continue to work together to support mental health and wellbeing within our school community.



We would like to invite families to complete a short survey on your experience as the family of your child attending Wooranna Park Primary School. The survey is anonymous and will provide the final piece of information on how we can work together to build positive mental health and wellbeing at Wooranna Park Primary School.



Please click on the link below:

https://beyou.syd1.qualtrics.com/jfe/form/SV_8BrqyFHxHoJ4DXv?survey_id=11266927521

Survey closes: Friday 19 April

Easter Raffle and Hat Parade

We are seeking donations for an Easter raffle, including chocolate eggs or Easter themed products. Please drop your donations into the Office. Every student will be entered into this raffle which will be drawn at our Golden Assembly on **Thursday 28 April from 9:50am.**



Uniform Donations

If you have any spare uniforms that your family no longer needs, we would really appreciate these to support other families. Feel free to drop them off at the front Office .

Volunteers for our Bunnings BBQ

We are looking for volunteers to donate some of their time to help Wooranna Park run a barbeque at the Dandenong Bunnings. If you are free on **Saturday 15 June** to help us cook and serve, but more importantly have some fun socialising with our local community, please fill in the following form <https://forms.gle/aHgPsmtplMumCAra6>.

The barbeque will run between 8am and 4pm. To start serving from 8am, we would need some assistance from 7am for preparation. For a successful day we would love to have 4 volunteers on each 1 hour shift. You are more than welcome to volunteer for longer than a 1 hour shift.



Please take note that **Thursday 28 April** is the last day of Term One, so students will be dismissed at 2:30pm.

School returns on Monday 15 April!

Kind regards,
Amanda Ellaby
Executive Principal

SHARING OUR OF LEARNING

G'day Everyone,

This is an update about what's been happening (and there has been plenty happening) in the **Performing Arts Space** this term.

The Preps have made a great start to the year, learning songs and learning poetry, with an emphasis on memorising lines and learning melodies. Well done, Preps!

Grade 1 and 2 have been learning songs from the new Wooranna Performing Arts Songbook, including A World of Your Own (from Wonka) and The Puffing Billy Song. Great stuff, Grade 1 and 2.



Grade 3 and 4 are making strong progress on learning the recorder Grade 3 learning notes and melodies, and Grade 4 having a go at harder pieces. They have almost learnt their lines to be able to perform the poem The Humble Spud. Terrific start to the year!



Grade 5 and 6 are tackling a very hard piece of surf music, Wipe Out, learning the structure, the melody, the chords and the rhythm on drums. As well as that they have nearly learnt their lines ready to perform The Geebung Polo Club. What a challenge!

Mr Meagher,
Performing Arts
Specialist Teacher

SHARING OUR OF LEARNING

In the Grade 5/6 unit we have been

Creating our STEM festival projects.



Visiting Lyndale Secondary College to explore high school, some activities were forensic science and ceramics.



Learning the URSTRONG program, which has taught us about friendships and strategies we can use when we have friendship fires.



Drafting and writing autobiographies and reading autobiographies, such as Cathy Freeman's 'Born to Run' and Anh Do's 'The Little Refugee'.



Adding and subtracting integers, learning about prime, composite, square and triangular numbers.



CHAPPY NEWS

Chappy Connie

Volunteer
Annie



Your chaplains this year are Samantha Bond and Connie Tay. We are here every Wednesday for groups, games and mentoring. School chaplains work closely with Wellbeing to support our community. We welcome volunteer Annie Stewart who is also studying Education Support but who may also step into Chaplaincy when her studies are completed. Annie will be assisting us with group programs.

ART CLUB –

Every Wednesday second bell at lunch. With thanks to Ms Laurel, we are holding lunch art in Ms Laurel's classroom-5/6A, which is next to Prep. We have been enjoying origami, sand tray creations, oil pastel drawing and more.

DRUMMING FOR RESILIENCE- grade 5/6 group

We have had a taste tester for those selected and will require permission slips back this week please.

SEASONS FOR GROWTH- grade 5/6 group

We have had a taste tester for those selected and will require permission slips back this week please.

Best Regards,
Chappy ☺



Chappy Sami



STEM FESTIVAL

Visit each classroom to inspire each other in our STEM pursuits as we work together to build a brighter future!



Wednesday 20 March
From 3:40pm till 4:40pm

Students will need to be accompanied by an adult as this is an after school activity.





Please wear a cultural costume or an **orange** shirt to join us in our Harmony Day celebrations.





A FRIENDLY REMINDER!

We are hosting our Annual General
Meeting on Tuesday 26 March
@ 6pm in 5/6B!

All welcome!



(03) 9795 2007

wooranna.park.ps@education.vic.gov.au



THURSDAY
MARCH
28

EASTER RAFFLE & HAT PARADE

We are seeking donations for an Easter Raffle including chocolate eggs or Easter themed products. Please drop them in at the office.

Our hat parade will take place at our Golden Assembly on Thursday 28 March at 9:50am.

The raffle will be drawn at this assembly and all students will be entered into the draw.

FACEBOOK & WEBSITE

A few posts have been put up on our website over the past week. Please make sure you visit the home page and scroll down to catch up.

<https://www.woorannaparkps.vic.edu.au/>



Easter raffle and hat parade

We are seeking donations for an Easter Raffle including chocolate eggs or Easter themed products. Please drop them in at the office.

[READ MORE](#)



STEM Festival

On Wednesday 20 March, from 3:40pm till 4:40pm, we will be hosting a STEM Festival.

[READ MORE](#)



Harmony Day

We are very privileged as a community here at Wooranna Park with students coming from a diverse range of cultural backgrounds.

[READ MORE](#)



End of Term - Early Dismissal on Thursday 28 March






Just a reminder that Thursday 28 March is our last day of Term One. Students will be dismissed at 2:30pm.

[READ MORE](#)



Wooranna Park Primary School
Published by Amanda Ellaby · 22 h · 🌐

The Grade Six students enjoyed going to [Lyndale Secondary College](#) to help prepare for their transition to secondary school next year. They enjoyed music, STEM, ceramics, virtual reality and sports secondary experiences. The entire 5/6 cohort is looking forward to another transition experience next week at Noble Park Secondary College.





Wooranna Park Primary School
Published by Amanda Ellaby · 2m · 🌐

Before and after school please remember to model safe road safety to all our students, particularly by making sure that you only cross at the supervised crossing.



[GREATERDANDENONG.VIC.GOV.AU](#)
Road Safety Around Schools
Find out how Council is helping to minimise the risk of collisions or road-related injuries around...



Wooranna Park Primary School
Published by Amanda Ellaby · 8h · 🌐

Please remember the importance of students being at school everyday! 💙💚💙💚

ATTENDANCE FACTS

Fact #4

Missing one school day a fortnight is the same as missing 4 whole weeks of school.

Between Foundation and Year 12 that adds up to 1 and a half years of school.



?

?



<https://www.facebook.com/WoorannaParkPrimarySchool>

GRADES OF THE WEEK



Each week our classes earn points during their Specialists' class by:

- asking for permission before leaving the classroom (respect).
- waiting for a teacher before entering a classroom (safe).
- lining up, ready to learn when the bell goes (responsible).

The class with the most points hosts Puggles for the week...and if a class wins Puggles three times then they will get a pizza party!

**Congratulations to Prep B, 1/2A, 3/4D and 5/6A for
being our grades of the week in the last fortnight!**

SUNSMART REMINDERS

Just a reminder that **all** students and staff are expected to wear a named broad brimmed navy-blue hat during any outside activities from the beginning of Term One, until the end of April as detailed in our [Sun Protection Policy](#).

Teachers on play support will be reminding students that **No Hat makes for No Play**. Students without an approved hat will be directed to remain in a shaded area.

Students are also encouraged to bring their own SPF30 (or higher) broad-spectrum, water-resistant sunscreen to school. They are welcome to ask the yard duty teacher or attend the Office to access sunscreen.

Where practical, Wooranna Park Primary School also encourages students engaged in outdoor activities to wear close-fitting, wrap-around sunglasses that meet the Australian Standard 1067 (Sunglasses: Category 2, 3 or 4) and cover as much of the eye area as possible.



Dress Code Policy

Responsibility:	Assistant Principal
Endorsed by Council:	February, 2023
Due for Review:	February, 2026



Help for non-English speakers

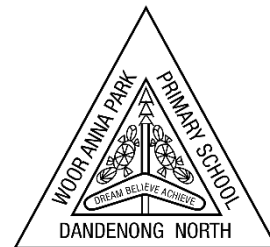
If you need help to understand the information in this policy, please contact Wooranna Park Primary School via phone (03) 9795 2007 or email wooranna.park.ps@education.vic.gov.au.

Rationale	<p>The purpose of the Student Dress Code Policy is to outline Wooranna Park Primary School's requirements for student dress and appearance and to provide information about uniform purchase and support, dress code implementation and exemption processes.</p> <p>This dress code has been developed by Wooranna Park Primary School's School Council in close consultation with our school community to ensure that it respects the rights of individual students whilst reflecting the values and interests of our community.</p> <p>The Student Dress Code aims to:</p> <ul style="list-style-type: none">• foster a sense of community and belonging and encourages students to develop pride in their appearance• support Wooranna Park's commitment to ensuring that our students feel equal and are dressed safely and appropriately for school activities• reduce student competition based on clothing• enhance the profile and identity of the school and its students within the wider community. <p>The School Council has developed a dress code that we believe provides a range of choices for students and is cost effective for families.</p>
Scope	<p>Students are expected to comply with this Student Dress Code Policy while traveling to and from school, during school hours and when attending school activities.</p>
Guidelines	<p>The full list of Wooranna Park Primary School's compulsory school uniform items is available at Appendix A to this policy and on our website.</p> <p>General Appearance</p> <p>While at school, travelling to or from school or participating in school activities, Wooranna Park students must comply with the following:</p> <ul style="list-style-type: none">• Uniforms must be clean and in good repair• Uniforms must be clearly marked with the owner's name• Additional layers of clothing may be worn underneath the uniform for added warmth, provided these undergarments are completely hidden or navy blue. <p>Jewellery and cosmetics</p> <p>Students are not permitted to wear decorative jewellery to school. No more than two stud earrings or small sleepers worn in the ears, and wristwatches (no smart watches), are the only acceptable jewellery.</p> <p>Cosmetics may not be worn at school. Only clear nail polish is permitted.</p>

	<p>Wooranna Park has the following measures in place for all outdoor activities during the daily sun protection times to help reduce the risk of over-exposure to UV radiation for staff and students.</p> <p>Hair and Sun safety Shoulder length or longer hair is to be tied back to help restrict the spread of nits and lice and for student safety.</p> <p>Navy, sun smart, school uniform hats must be worn outside throughout Term One and Four and on any other day prescribed by the school. Navy, sun smart school uniform hats may also be worn outside of this time period, by parent or student choice. Hats are not to be worn inside.</p> <p>Students are permitted to wear sunglasses during outdoor activities. Sunglasses should be close-fitting, wrap-around style that meet the Australian Standards 1067 and cover as much of the eye area as possible.</p> <p>Purchase of uniforms Logoed items need to be purchased from PSW Clothing. Other items such as pants and shorts can be purchased elsewhere.</p> <p>Families can contact the leadership team to discuss supports that may be available to them if they are having trouble meeting uniform costs, including information about eligibility for uniform support through State Schools' Relief fund.</p> <p>Wooranna Park Primary School also has second hand uniforms available to families on request.</p>
Implementation	<p>Wooranna Park will ensure that this Student Dress Code Policy is communicated to all families and students through our website and newsletter. We will assist students who may be experiencing difficulties complying with this policy where possible.</p> <p>Students wearing non-compliant uniform items may be asked to change into a compliant item of clothing provided by the school.</p> <p>If a student is out of school uniform or otherwise breaches the Student Dress Code on a recurring basis, a note will be provided to the student and parents by the classroom teacher. If non-compliance with the dress code becomes a continued occurrence, the principal will be informed and a phone call home may be required. In this event, the school will continue to work with the student and family to support compliance.</p> <p>Measures taken by Wooranna Park to address concerns about student non-compliance with the Student Dress Code will also be addressed in accordance with our <i>Student Wellbeing and Engagement Policy</i>.</p> <p>Exemptions We recognise that there may be situations where the application of this dress code may affect students unequally.</p> <p>Students and their parents or carers may apply either in writing or in person to the principal for an exemption to this Student Dress Code Policy if:</p> <ul style="list-style-type: none"> • an aspect of this code prevents the student from complying with a requirement of their religious, ethnic or cultural beliefs or background • the student has a particular disability or health condition that requires a departure from the dress code

	<ul style="list-style-type: none"> the student or their parents/carers can demonstrate economic hardship that prevents them from complying with the dress code. <p>When the Principal receives a request for an exemption, they will:</p> <ul style="list-style-type: none"> consider the grounds for the exemption request explain the process to the student and/or their parents/carers encourage the student and/or their parents/carers to support their application with evidence. <p>The principal or delegate will then try to negotiate a resolution that is acceptable to all parties. If an exemption is not allowed, then written reasons will be provided to the student and/or their parents or carers.</p> <p>Wooranna Park welcomes feedback from the school community in relation to this Student Dress Code. If you have a concern or complaint about the Student Dress Code, further information about raising a concern or complaint is available in our school's <i>Parent Complaint Policy</i>.</p>
Further Information and Resources	<p>Department's Policy and Advisory Library:</p> <ul style="list-style-type: none"> Student Dress Code policy Student Engagement policies and guidelines <p>This policy should be read in conjunction with the following school policies:</p> <ul style="list-style-type: none"> Sun Projection Policy Parent Complaints Policy Student Wellbeing and Engagement Policy State Schools' Relief

**Wooranna Park Primary School
Compulsory Uniform Items**



Uniform supplied by Primary School Wear (PSW)

SHOES	Black school shoes/boots (flat heel only) Black or white sport shoes
SOCKS	Plain white, black or navy socks. Plain black or navy tights
JUMPERS	Round neck windcheater, navy blue with logo Bomber jacket, navy blue with logo
TOPS	Short sleeve polo shirt, orange with logo Long sleeve polo shirt, orange with logo Long sleeve plain navy skivvy (no logo to be worn under jumper only)
DRESS	As supplied by PSW
SKORTS	Navy blue with no logos or stripes
SHORTS	Plain navy blue with no logos or stripes No footy shorts, jeans or bike shorts
PANTS	Navy blue track pant or full-length leggings No logos or stripes. No jeans
HATS	Wearing of school hats is compulsory for children throughout Terms One and Four for all outdoor activity. Navy blue, sun smart hat with logo.
HAIR	Shoulder length or longer hair is to be tied back to help restrict the spread of nits and lice and for student safety. Navy blue or black head bands or hair ties and plain hair clips may be worn.
JEWELLERY	A wristwatch and no more than two studs or small sleepers in each or either earlobe may be worn. Makeup and coloured nails are not permitted. Necklaces are not permitted unless they are religious in nature. No smartwatches.
HEADWEAR	Black, navy blue or white

Orders with payment can be made
as of the 15th of April, at the Office.

PRICES
REDUCED

HAT AND RECYCLED BAG

PROMOTION 2024 TERM 2 OFFER

HURRY
OFFER ENDS
JUNE 28TH

 **UniformGroup**

PSW 

 **ACADEMY
UNIFORMS**

DISCOUNT ONLY APPLIES TO ORDERS PLACED BETWEEN APRIL 15TH TO JUNE 28TH 2024
ORDER FULFILMENT IS 12 WEEKS FROM ORDER PLACEMENT

LEGIONNAIRE HAT ONE SIZE FITS ALL

I 100507 | MOQ 50 | **\$7.50** (LOGO PRINT)

I 100507 | MOQ 50 | **\$9.50** (LOGO EMBROIDERY)

Polyester cotton legionnaire hat is a must in sun protection and especially practical for younger children. It covers the neck and ears from the sun with an elasticised ponytail hole.

- Polyester/cotton drill fabric
- Back flap protects neck and ears
- Front peak protects the face and eyes
- UPF50+ rated, meets SunSmart regulations
- Ponytail hole with velcro closure for a comfortable fit
- A favourite for Preps as it offers the best sun protection and is easy to put on/take off

12 Ink	10 Red
2 Bottle	15 Royal
3 Black	25 Royal
9 Maroon	6 Gold



SAFETY SLOUCH™ HAT SIZES: S, M, L, XL

I 100514 | MOQ 50 | **\$11.50** (LOGO PRINT)

I 100514 | MOQ 50 | **\$13.50** (LOGO EMBROIDERY)

Exclusive to Uniform Group, the Safety Slouch™ was the first hat available to contain a quick release safety clip on the draw cord to reduce accidents in the playground and avoid unintentional injuries.

- Polyester/cotton drill fabric
- Under chin toggle adjusts for a secure fit
- Stiff brim that won't soften and lose shape
- UPF50+ rated, meets SunSmart regulations
- Clip releases when under duress to prevent neck injury
- Wide brim ensures maximum sun protection for the ears, face and neck

1 Navy	10 Red
2 Bottle	15 Royal
3 Black	6 Gold
9 Maroon	



BUCKET HAT SIZES: S, M, L, XL

I 100525 | MOQ 50 | **\$9.00** (LOGO PRINT)

I 100525 | MOQ 50 | **\$11.00** (LOGO EMBROIDERY)

The classic Bucket Hat has been a staple in schools for many years. It provides optimum protection and is easy to care for. Ask us about contrast colour piping or adjustable toggles.

- Easy to machine wash
- Polyester/cotton drill fabric
- Ventilation holes help the head breathe
- 7cm brim - UPF50+ rated, meets SunSmart regulations
- A favourite with primary students as it's comfortable and practical

1 Navy	6 Gold
2 Bottle	7 Orange
3 Black	15 Royal
9 Maroon	



MICROFIBRE SLOUCH HAT SIZES: S-M, L-XL

I 100797 | MOQ 50 | **\$12.50** (LOGO PRINT)

I 100797 | MOQ 50 | **\$14.50** (LOGO EMBROIDERY)

Soft Microfibre Slouch hat with full 7.5cm brim for sun protection. Scrunches up small and bounces back to shape. Includes adjustable crown cord and ventilation holes to disperse heat.

- Easy to machine wash
- Adjustable toggle for a secure fit
- Ventilation holes help the head breathe
- 7.5cm brim floppy brim for a softer hat
- Scrunches up into a school bag and bounces back to shape
- UPF50+ rated polyester microfibre fabric feels light yet offers great protection and meets SunSmart regulations

1 Navy
2 Bottle
3 Black
9 Maroon
15 Royal



TREK JUNIOR BACKPACK

8362220 | MOQ 50

50-99 **\$47.00** | 100+ **\$43.00**

Includes logo print or embroidery

Our new range of school bags made from recycled materials have been specially developed by our experienced staff with an emphasis on comfort, safety and durability.

- 20 litre capacity
- Lightweight
- Back panel with spine protection
- Foot stoppers
- Reflective panels
- Padded straps
- Ergonomic zip pullers



**DURABLE
LIGHTWEIGHT BAG**

SPRINT BACKPACK

8361105 | MOQ 50

50-99 **\$49.00** | 100+ **\$45.00**

Includes logo print or embroidery

Streamlined lightweight backpack with reflective piping for visibility. Strong, practical and ergonomic features with extra strong zippers, buckles, reinforced lining and stitching.

- 20 litre capacity
- Lightweight
- Padded back and straps
- Reflective Piping and panels



**DURABLE
LIGHTWEIGHT BAG**

CAMPUS SENIOR BACKPACK

8363150 | MOQ 50

50-99 **\$63.00** | 100+ **\$59.00**

Includes logo print or embroidery

Our new range of school bags made from recycled materials have been specially developed by our experienced staff with an emphasis on comfort, safety and durability.

- 30 litre capacity
- Lightweight
- Back panel with spine protection
- Foot stoppers
- Reflective panels
- Padded straps
- Ergonomic zip pullers



**DURABLE
LIGHTWEIGHT BAG**

COLLEGE SENIOR BACKPACK

8363200 | MOQ 50 |
50-99 **\$56.00** | 100+ **\$51.00**
Includes logo print or embroidery

The popular College Senior School Bag has strong, practical and ergonomic features with extra strong zippers, buckles, reinforced lining and stitching.

- 40 litre capacity
- Padded back and straps
- Reflective panels
- 3 compartments

12 Ink	3 Black	55 Charcoal
-----------	------------	----------------



**DURABLE
LIGHTWEIGHT BAG**

SCHOLAR BAG

8360396 | MOQ 100 | **\$9.00**
Includes logo print or embroidery

The Scholar Bag is a must have accessory for students. Perfect for protecting school books, homework and notices to parents.

- Water resistant
- Name tag included
- Measures 38 x 28 cm
- Reflective strip for high visibility
- Reinforced corners for extra durability
- Velcro closure makes opening and closing easy
- Tough polyester fabric with PVC coating for a durable, easy care bag

12 Ink	2 Bottle	3 Black
9 Maroon	10 Red	15 Royal



SLING BAG

8360650 | MOQ 100 | **\$18.00**
Includes logo print or embroidery

The sling bag is made from heavy duty recycled nylon. It is a convenient size and waterproof so it's perfect for excursions and sports days. The drawstring pulls out to carry straps so that the bag can be carried over the shoulder as a backpack.

- Made from robust Oxford Weave Recycled Nylon
- Double drawstrings so the bag can be carried as a backpack
- Zip compartment on the front keeps money/keys safe and separate from wet goods

12 Ink	3 Black
-----------	------------



SWIM BAG

8360392 | MOQ 100 | **\$14.00**
Includes logo print or embroidery

The multi-purpose swim bag is ideal for excursions, library or storing your wet clothing after swimming. Lightweight yet tough and the perfect size to suit your needs.

- Double drawstring closure makes it easy to use
- Drawstrings double as backpack straps for easy carrying
- Made from Recycled Polyester

12 Ink



Please send orders to customer service at
customerservicedesk@uniform-group.com.au
Please advise your selected delivery date when placing your order.

Terms & Conditions

Backpack and Bags: Sales price includes embroidery or one colour print of your school logo (normal price \$6.00) and free artwork set up valued at \$88.00. \$1.05 extra for 2 colour print. For multicolour prints or embroidery prices, please contact your Account Manager or our customer service team on (03) 9768 0333. All prices include GST.

Minimum orders: 50 for backpacks, 100 for bags. Please advise your selected delivery date on above order form. Garment colours shown are for illustrative purposes only. Promotion not available via online channels.

Promotion ends June 28th 2024, orders received after this date will revert to normal prices. Order fulfilment is 12 weeks from order placement date.

Hat Range: Sales price includes embroidery or one colour print of your school logo (normal price \$6.00) and free artwork set up valued at \$88.00. \$1.05 extra for 2 colour print. For multicolour prints or embroidery prices, please contact your Account Manager or our customer service team on (03) 9768 0333. All prices include GST.

Minimum orders: 50. Quick delivery orders will be delivered within 2 weeks of order placement, Made to Order/BTS style orders will be delivered from January 2024. Garment colours shown are for illustrative purposes only. Promotion not available via online channels.

Promotion ends June 28th 2024, orders received after this date will revert to normal prices. Order fulfilment is 12 weeks from order placement date.



UNIFORM REMINDERS

The wearing of school uniform is compulsory at Wooranna Park Primary School. For our full uniform, please see the school website. All our uniform pieces can be purchased at **PSW, Unit 1, 9-11 South Link, Dandenong South, 3157**



Orange Short Sleeve
Polo Shirts



Navy Blue
Windcheater



Navy Blue
Bomber Jacket



Summer Dress



Navy Blue tracksuit
pants/full length
leggings No Jeans



Navy Blue Rugby or
Gaberdine Shorts/Skort



Navy Blue Hat



Orange Long Sleeve
Polo Shirt



Socks –
White, Black, Navy



Sport Shoes or Black Shoes



Gloves and Scarves
(White, Black, Navy)

The following items are not permitted as a part of our uniform:

Jewellery



Long Earrings



Nail Polish



Make-Up



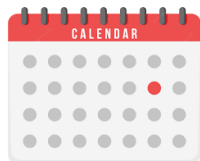
Please clearly label all clothing items including shoes.

IMPORTANT DETAILS

CURRICULUM DAYS

The following days have been endorsed by School Council:

- Friday 17 May
- Wednesday 7 August
- Monday 28 October



Students do not attend on these days.

The last day of Term One is Thursday 28 March.
School finishes at **2:30pm**.

COMMUNICATION

Wooranna Park Primary School recognises the importance of the partnership between schools and families to support student learning, engagement and wellbeing.

Your child's teacher will offer you a range of opportunities to communicate with them including:

- ✓ XUNO
- ✓ School diary
- ✓ Formal meetings
- ✓ Before/After school chats



If you do not have access to XUNO please contact our school Office and find out how you can obtain it as XUNO will be used several times each week so we want everyone to have access.



FACEBOOK

Please like our [Facebook page](#). This page will be used by the school to inform families and the public of events and updates at the school. Feedback and discussion with parents/carers are welcome, but the school will not use Facebook for this purpose.

Please contact the school directly if you wish to discuss matters, as per our communication process. Only this [Facebook page](#) is endorsed by the Principal. Any other Facebook pages are not officially authorised representatives of the school.



CONTACT DETAILS

It is very important the school has your most current emergency contact telephone details, home and e-mail address.

If you change telephone details or home and e-mail address at any point, we ask that you update the school with your accurate contact details as soon as possible.

بسیار مهم است شماره تماس اضطراری
و آدرس دقیق خانه شما
را ما در مکتب داشته باشیم

اگر شما شماره تلفون یا آدرس خود را تغییر
میدهد لطفاً هر چه
زودتر مکتب را اطلاع دهید



STUDENT SUPERVISION

Please note that our school grounds are supervised by school staff at the following times:

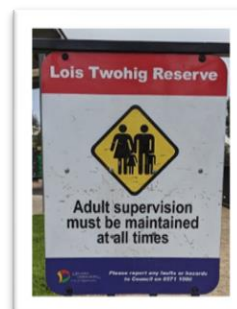
- Before school from 8:30am to 9am
- Throughout recess and lunch
- After school from 3:30pm to 3:45pm.

Our gates are locked each afternoon at 3:45pm. Students in the school grounds after this time will be cared for at VillageOHSC at the family's expense.

The school grounds are not supervised outside of the above times.

It is important that families understand that the park, opposite the school, is not supervised by staff before or after school.

While some families use this area as a meeting place, please know children must be supervised by an adult, as per the Greater Dandenong Council's direction.



BREAKFAST CLUB



Breakfast is available for all students from 8:15am.

MORE IMPORTANT DETAILS

OUT OF HOURS SCHOOL CARE

**Village OSHC provides
Outside School Hours
Care at Wooranna Park
Primary School**



It takes a village to raise a child and we are yours! Village OSHC partners with schools Australia-wide to keep children safe and happy outside school hours as parents work or study. In our care, children make new friends, build on old friendships, get exercise, eat healthy food, embrace their imagination and have loads of fun in a safe and respectful environment.

Our after-school care program is run by Village OSHC. They operate **After School Care from 3.30pm to 6pm, Monday to Thursday.**

All families are strongly encouraged to register their child/ren for VillageOSHC as it is free to enrol and while you are under no obligation to use the service it does provide support for you in the event of an emergency. Plus, our students love attending this service! For information about this program, please contact the service directly at <https://villageoshc.com.au/>

MOBILE DEVICES

In line with the Department of Education's [Mobile Phone policy](#), all phones brought to school must be switched off and stored securely in the front Office, during the school day.

A **mobile phone** is a telephone with access to a cellular (telecommunication) system, with or without a physical connection to a network. For the purpose of this policy, "mobile phone" refers to **mobile phones and any device** that may connect to or have a similar functionality to a mobile phone such as a smartwatch.

When a student is not complying with this mobile phone policy, we will be required to follow a process in accordance with our existing student engagement policies.



LUNCH ORDERS

Subway lunch orders are available each Friday. There is a pre-ordering system and orders must be placed via XUNO by **4pm each Tuesday** for the Friday's lunch.



Late orders cannot be accepted.

Subway \$6

View

SAFETY

All bike and scooter riders are required to wear a bike helmet in Victoria.

Approved helmets have the Australian Standards Mark TM (AS/NZS 2063) and will be marked as suitable for cycling.

Children under the age of 12 may ride on footpaths, as can a supervising adult. They are required to give way to pedestrians and to wheel their bicycles over pedestrian and children's crossings.

Also, by law everyone must wear a seat belt when travelling in a car in Australia



SUNSMART



For Term One and Four, we wear our named, broad brimmed, navy blue hat at all times when outside.

PROTECT

Everyone has the right to be safe and be protected from abuse.

No one should behave in a way that makes you feel unsafe or afraid, including anyone in your family, anyone at school or anywhere else in the community.

Tell a teacher or any adult at your school if you feel unsafe.



It's everyone's responsibility.

Adults at school must listen and respond to concerns about child abuse.

If you suspect abuse of any child or young person, you have a responsibility to report it, even if you are not sure.

Further information & resources
www.education.vic.gov.au/protect

AUTUMN Holidays

Team
Kids

BOOK TODAY
teamkids.com.au
1300 035 000

BEST
HOLIDAY
PROGRAMS
IN AUSTRALIA

TeamKids have another amazing Autumn Holiday program planned!

- Learn new skills and make new friends
- Qualified and REMARKABLE Educators
- Digital detox with our no screens policy
- Delicious and nutritious morning and afternoon snacks
- CCS-approved care

Head to <http://downloads.teamkids.com.au/lyndhurst-primary.pdf> to check out what's on + secure your spot today!



SCHOOL HOLIDAY



8:30-4:30

- **Multi-sports**
soccer, cricket, tennis,
dodgeball, basketball...
- **Inflatables**
- **Bumper cars**
- **Arts n' Crafts**
- **Face painting**
- **Science**
- **Laser tag**
- **Bubble soccer**



**age
5-11**

9547 2555

**APPROVED BY
DEPARTMENT OF
EDUCATION**

**FROM \$10 PER DAY
WITH CCS**

WWW.SPRINGVALEINDOORSports.COM.AU/SCHOOL-HOLIDAYS



Fall into an Exciting Term 2 With VillageOSHC!



As the seasons change and the first term closes out, VillageOSHC is ready to welcome Term 2 with open arms!

We're launching into a pile of excitement next term! Ranging from creative activities and games, chowing down on nutritious snacks and coming together to create unique play-based learning experiences for children of all ages!

Book for Term 2 at VillageOSHC.com.au and fall into unbe-leaf-able adventures!

Book Today at VillageOSHC.com.au for Term 2!

Term 1 2024



Keep this handy calendar on your fridge for upcoming events at school. Check XUNO, visit [our website](#), or follow our [Facebook page](#) as this calendar is subject to changes.

	Monday	Tuesday	Wednesday	Thursday	Friday
Jan	29 Curriculum Day No School	30 Term One begins! Prep students start at 9am till 12:30pm Don't forget your school, sun smart hat!	31 No Preps at school	01	02
February	05	06	08 No Preps at school	08	09 Whole School Assembly @ 2:40pm
	12 XUNO Parent Briefing (3:40 till 4pm)	13 Getting to Know You Interview (3:40 till 5:50pm)	14 No Preps at school Getting to Know You Interview (3:40 till 5:50pm)	15	16 Whole School Assembly @ 2:40pm
	19	20 School Council @ 6pm	21 No Preps at school	22	23
March	26  Have you Liked our school's official Facebook page? We post information regularly!	27	28 No Preps at school	29	01 Clean Up Whole School Assembly @ 2:40pm
	04 Curriculum Day No students at school	05	06 Lyndale SC excursion (6s)	07	08 Toolbox Education (5/6s)
	11 Labour Day No School	12	13	14	15 CRAZY HAIR DAY Team Time @ 2:40pm
	18	19	20 	21 Harmony Day (Cultural dress or orange)	22
	25 Maths Games Day  Noble Park SC excursion (5/6s)	26 AGM & School Council @ 6pm	27 (3:40pm till 4:40pm)	28 Golden Assembly Last Day of Term 2:30pm finish	31 Good Friday No School 



We are proud to acknowledge the Bunurong People as the traditional owners and custodians of the land on which Wooranna Park Primary School is located. We pay our respects to Elders past, present and emerging.

Download the **XUNO Family app** from Google Play or iOS app store to receive notifications to your phone of upcoming events, and notices!

XUNO

9795 2007

www.woorannaparkps.vic.edu.au

