

Wooranna Park's Wonderings



Wednesday 1 April 2026

Hi everyone,

Farewell to Dawn

This Thursday we will bid farewell to Dawn, our School Crossing Supervisor, who has been there no matter the weather rain, hail or sunshine!

For 9.5 years, Dawn has been a friendly and familiar face at the crossing, helping our students and families get to and from school safely each day. Her care, commitment and presence have been greatly appreciated by our school community.

We thank Dawn for the important role she has played in supporting the safety of our students and wish her all the very best for the future.

Please make sure you give Dawn a big thank you when you see her over the next two weeks!



We are proud to share that our school has been awarded **Silver Status** in recognition of our work in **School-Wide Positive Behaviour Support (SWPBS)**.

This achievement reflects our ongoing commitment to creating a safe, respectful and responsible learning environment for all students. It recognises the consistent work of our staff, students and wider school community in building positive behaviours, clear expectations and supportive learning spaces across our school.

We are incredibly proud of this milestone and thank our staff, students and families for the part they have played in helping us achieve this recognition.

More information about our school wide positive behaviours supports can be found on our website: [https://www.woorannaparkps.vic.edu.au/page/38/School-wide-positive-behaviour-support-\(SWPBS\)](https://www.woorannaparkps.vic.edu.au/page/38/School-wide-positive-behaviour-support-(SWPBS))

Annual General Meeting and School Council

On Tuesday 30 March we hosted our **Annual General Meeting** which was then followed by our first School Council meeting for 2026.

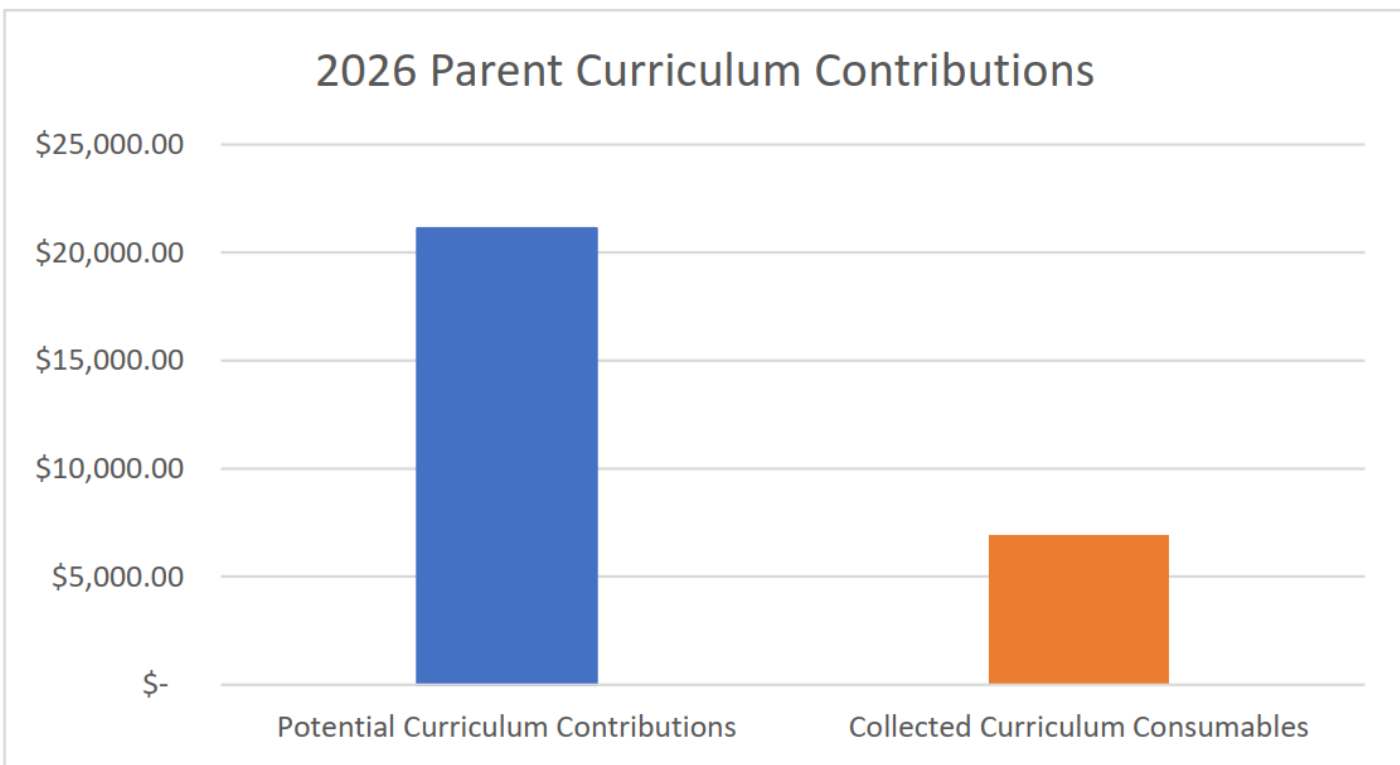
Please note that we do still have **2 parent rep positions (casual vacancies)** to fill. If you are interested then please email the school at wooranna.park.ps@education.vic.gov.au



Financial Support

As you are probably aware, schools provide students with free instruction to develop the knowledge and skills for life-long learning, social development, active and informed citizenship, set out in the Victorian Curriculum. Your financial contributions in support of this are voluntary.

The ongoing financial support of our families ensures that our school can offer above and beyond what is set out in the mandated curriculum. Thank you to all families who have financially supported our school through voluntary contributions. As of 10 June, this year, we have collected 33% of curriculum contributions, which enables us to resource and purchase additional equipment to improve our learning programs.



The extra support from families has enabled us to offer special curriculum experiences; enhance digital learning opportunities; school buildings and grounds maintenance and enhancements; faster WIFI and internet.

We are still able to receive parent contributions through a variety of payment methods:

- **Eftpos** – available at the Office
- **BPAY** – Individual reference number on your family statement
- **Direct Deposit** – to the school’s bank account.

Commonwealth Bank: BSB: 063249 ACC: 10045292

Be You - Family Survey

This year we are working alongside Be You to promote positive mental health and wellbeing with our students, staff and families. This term senior school students and staff completed an anonymous survey to inform us on how we can continue to work together to support mental health and wellbeing within our school community.



We would like to invite families to complete a short survey on your experience as the family of your child attending Wooranna Park Primary School. The survey is anonymous and will provide the final piece of information on how we can work together to build positive mental health and wellbeing at Wooranna Park Primary School.



Please click on the link below:

https://beyou.syd1.qualtrics.com/jfe/form/SV_8BrqyFHxHoJ4DXv?survey_id=11266927521

Survey closes: **4pm on Friday 4 April**

Uniform Donations

If you have any spare uniforms that your family no longer needs, we would really appreciate these to support other families. Feel free to drop them off at the front Office.

We do also have a large amount of washed and clean items that are available free for you to take and name for your child/ren. Please visit the Office to take what you need.



Easter Raffle and Hat Parade

We are seeking donations for an Easter raffle, including chocolate eggs or Easter themed products. Please drop your donations into the Office. Every student will be entered into this raffle which will be drawn at our Golden Assembly on **Thursday 2 April from 12:20pm**.

Please take note that **Thursday 2 April** is the last day of Term One, so students will be dismissed at 2:30pm. DS Sports will be open from 2:30pm till 6pm on the last day of this term to support families who need childcare, so please enrol your child/ren ASAP as places are limited, at:

https://prodadmin.myxplor.com/enrollment_v2/centre/fTJ9M6mTw1AtPCyqOf3k0A

School returns on **Monday 20 April**, with classrooms opening from 8:50am.

take!
note.

Kind regards,
Amanda Ellaby
Executive Principal



THURSDAY
APRIL
2

EASTER RAFFLE & HAT PARADE

We are seeking donations for an Easter Raffle including chocolate eggs or Easter themed products. Please drop them in at the office.

Our hat parade will take place at our Golden Assembly on Thursday 2 April at 12:20pm.

The raffle will be drawn at this assembly and all students will be entered into the draw.



Stories to discover.
Stories to tell.

Victorian Premiers' Reading Challenge 2026

Dear parent/carer,

The Victorian Premiers' Reading Challenge is now open, and we're excited to be taking part!

All children from birth to Year 10 are welcome to join in.

This year's Challenge theme is 'Stories to discover. Stories to tell'. Stories can inspire and challenge us and help us grow. They open our eyes to new worlds and new ways of thinking.

The number of books read can be varied for everyone's needs.

All children who complete the Challenge will receive a certificate of achievement signed by the Victorian Premier and former premiers.

To learn more about the Challenge, visit [Premiers' Reading Challenge | vic.gov.au](https://www.vic.gov.au/premiers-reading-challenge)

Students will receive their logins from their teacher while there is also a paper record sheet option. You can also contact Ms. Giselle, our Challenge Coordinator, with any questions.

Happy reading!
Ms. Giselle

GRADES OF THE WEEK



Each week our classes earn points during their Specialists' class by:

- Using calm and appropriate manners when speaking to others (respect).
- Caring for, looking after and using equipment for its correct purpose (safe).
- Worrying about ourselves and the things that affect us (responsible).

The class with the most points hosts Puggles for the week...and if a class wins Puggles three times then they will get a pizza party!

**Congratulations to 1/2C and 5/6C
for being our grades of the week in the last week!**

WOORANNA PARK PRIMARY SCHOOL, DANDENONG NORTH

SchoolPix is coming to photograph on:

Friday, 15 May 2026

SIBLING ORDERS

must be placed prior to 8am on
Friday, 15 May 2026



Order at order.schoolpix.com.au

Orders with **FREE delivery**

to your school **CLOSE 5 WORKING
DAYS** after your last photography
session. A postage fee will apply for
orders placed after this date.

Misplaced your order flyer?

Please visit www.schoolpix.com.au and use
the student search to find your child's unique
ID or contact our **Customer Care team** on
1300 766 055 or help@schoolpix.com.au.

FUNDRAISING UPDATE

Better facilities, more opportunities and an even greater school experience for our kids!

The Wooranna Park fundraising team is a small but enthusiastic team of volunteer mum's, dad's, grandparents, neighbours, friends, aunties, uncles and supporters of Wooranna Park students.

We run:

- Mother's/Father's day stall
- Christmas stall
- Hot chocolate Fridays
- Colour run

How this helps Wooranna kids?

Every dollar we raise goes directly to improving our kids' school experience. Thanks to fundraising, we've provided new drinking troughs, sports uniforms and more. The kids love to get involved by making hampers and posters for our fundraising events and for some of them it's the highlight of their year! This year, we're working towards a cooling system for the TOC hall and supplies for our amazing new art classes.

We Need All Kinds of Skills!

Whether you're great at organising, cooking, crafting, planning or just lending a hand, there's a way you can help! You can:

- ✓ Join the committee (just one short meeting a month)
- ✓ Help at a single event for an hour or more at one of our stalls or hot chocolate days
- ✓ Take the lead on a project - like our Bunnings BBQ

We are always looking to welcome volunteers into the Wooranna Park Fundraising Committee.

The time commitment is flexible and up to you.

We'd love to have your skills and support on our Fundraising Committee - together, we can make a real impact for our kids!

If you'd like to help, just email wooranna.park.ps@education.vic.gov.au.



FACEBOOK & WEBSITE

A few posts have been put up on our website over the past week. Please make sure you visit the home page and scroll down to catch up.

<https://www.woorannaparkps.vic.edu.au/>



We Need Your Help

One of the sub-committees that School Council is responsible for is the fundraising sub-committee. This group contributes to the school finances by holding fundraising events throughout the year.

[READ MORE](#)



Parent Contributions

We will be accepting your contributions for 2026, ideally via XUNO (Events and Fees) from **21 January 2026** or alternatively the school will be open as of **27 January 2026** to receive parent contributions via EFTPOS.



Wooranna Park Primary School
Published by Amanda Ellaby · 9 February at 13:00 · 🌐

Remember your child/ren can enjoy breakfast at school from 8:15am each and every day! Thank you to Ms Michelle, Ms Giselle, Mr Dan and Ms Rachael for welcoming our stud... See more

Wooranna Park Primary School
Published by Amanda Ellaby · 24 March at 13:00 · 🌐

Next Wednesday our JSC members will be selling Zooper Doopers. Please pack a coin for your child if they would like one!

JSC fundraiser!

Wednesday 1st April

Selling \$1 Zooper Doopers at long lunch play

support us repaint the brick wall near the oval

Wooranna Park Primary School
Published by Amanda Ellaby · 21 March at 07:00 · 🌐

On Friday we proudly celebrated Harmony Day at our school! ❤️... See more



JOIN US ON
facebook

Wooranna Park Primary School
Published by Amanda Ellaby · 24 February at 10:00 · 🌐

Lunchtime Clubs

TIMETABLE

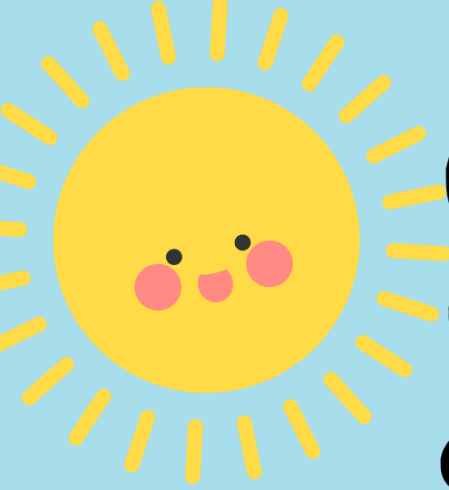
M Koorie Club	T Dance and Senior Games Clubs	W
T Chess Club	F Senior Games and Soccer Clubs	

Wooranna Park Primary School
Published by Amanda Ellaby · 20h · 🌐

Please remember that school finishes at 2:30pm on Thursday 2 April as it is the last day! DS Sports will be open from 2:30pm till 6pm on the last day to support families... See more

**END OF TERM
EARLY DISMISSAL**

<https://www.facebook.com/WoorannaParkPrimarySchool>



SUN SAFETY



WEAR A HAT & SUNGLASSES

To ensure that every child has their hat and/or sunglasses when needed, we kindly ask that you encourage your child to leave their sun smart items at school.

This will help us make sure they are always prepared for outdoor activities.



SUNSMART REMINDER

Just a reminder that **all** students and staff are expected to wear a named, broad brimmed navy-blue hat during any outside activities from the beginning of Term Four, until the end of April.

Teachers on play support will be reminding students that **No Hat makes for No Play**. Students without an approved hat will be directed to remain in a shaded area.

Wooranna Park Primary School encourages all staff and students to apply **SPF50 or SPF50+ broad-spectrum, water-resistant sunscreen daily** whenever UV levels reach 3 and above. Sunscreen should be applied at least 20 minutes before going outdoors and reapplied every two hours (or more frequently if sweating or swimming).

Students and staff are encouraged to bring their own SPF50 or SPF50+ broad-spectrum, water-resistant sunscreen to school.



UNIFORM REMINDERS

The wearing of school uniform is compulsory at Wooranna Park Primary School. For our full uniform, please see the school website. All our uniform pieces can be purchased at **PSW, Unit 1, 9-11 South Link, Dandenong South, 3157**



Orange Short Sleeve
Polo Shirts



Navy Blue
Windcheater



Navy Blue
Bomber Jacket



Summer Dress



Navy Blue tracksuit
pants/full length
leggings No Jeans



Navy Blue Rugby or
Gaberdine Shorts/Skort



Navy Blue Hat



Orange Long Sleeve
Polo Shirt



Socks –
White, Black, Navy



Sport Shoes or Black Shoes



Gloves and Scarves
(White, Black, Navy)

The following items are not permitted as a part of our uniform:

Jewellery



Long Earrings



Nail Polish



Make-Up



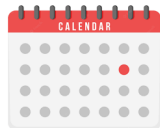
Please clearly label all clothing items including shoes.

IMPORTANT DETAILS

CURRICULUM DAYS

The following days have been endorsed by School Council:

- Tuesday 10 March
- Friday 22 May
- Monday 24 August
- Monday 26 October



Students do not attend school on these days. DSSports will be providing childcare on these days.

On the last day of Terms One, Two and Three we have an early dismissal time of **2:30pm** and on the last day of Term Four we finish at **1:30pm**.

COMMUNICATION

Wooranna Park Primary School recognises the importance of the partnership between schools and families to support student learning, engagement and wellbeing.

Your child's teacher will offer you a range of opportunities to communicate with them including:

- ✓ XUNO
- ✓ School diary
- ✓ Formal meetings
- ✓ Before/After school chats

If you do not have access to XUNO please contact our school Office and find out how you can obtain it as XUNO will be used several times each week so we want everyone to have access.



FACEBOOK

Please like our [Facebook page](#). This page will be used by the school to inform families and the public of events and updates at the school. Feedback and discussion with parents/carers are welcome, but the school will not use Facebook for this purpose.

Please contact the school directly if you wish to discuss matters, as per our communication process. Only this [Facebook page](#) is endorsed by the Principal. Any other Facebook pages are not officially authorised representatives of the school.



CONTACT DETAILS

It is very important the school has your most current emergency contact telephone details, home and e-mail address.

If you change telephone details or home and e-mail address at any point, we ask that you update the school with your accurate contact details as soon as possible.

بسیار مهم است شماره تماس اضطراری
و آدرس دقیق خانه شما
را ما در مکتب داشته باشیم

اگر شما شماره تلفون یا آدرس خود را تغییر
میدهد لطفاً هر چه
زودتر مکتب را اطلاع دهید



STUDENT SUPERVISION

Please note that our school grounds are supervised by school staff at the following times:

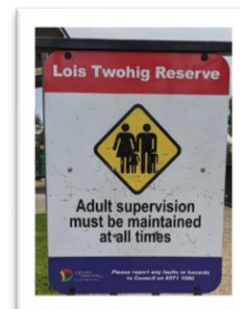
- Before school from 8:30am to 9am
- Throughout recess and lunch
- After school from 3:30pm to 3:45pm.

Our gates are locked each afternoon at 3:45pm. Students in the school grounds after this time will be cared for at [DSSports](#) at the family's expense.

The school grounds are not supervised outside of the above times.

It is important that families understand that the park, opposite the school, is not supervised by staff before or after school.

While some families use this area as a meeting place, please know children must be supervised by an adult, as per the Greater Dandenong Council's direction.



BREAKFAST CLUB



Breakfast is available for all students from 8:15am.

MORE IMPORTANT DETAILS

OUT OF HOURS SCHOOL CARE



DS Sports will be providing Outside School Hours Care at Wooranna Park Primary School from 3.30pm to 6pm, every afternoon, Monday to Friday.

DS Sports provides an adventurous and stimulating After School Care program, in a safe and inclusive environment.

DS zones are a place for growth and nurture the building of life-time skills. Our zones incorporate Health, Play, Leisure, Language, Real Life Connections and promotes the building of positive relationships with peers and our staff.

All families are strongly encouraged to register their child/ren for DS Sports as it is free to enrol and while you are under no obligation to use this service it does provide support for you in the event of an emergency. For information about this program, please contact this service directly at:

<https://www.dssports.org/wooranna-park-primary>

MOBILE DEVICES

In line with the Department of Education's [Mobile Phone policy](#), all phones brought to school must be switched off and stored securely in the front Office, during the school day.

A **mobile phone** is a telephone with access to a cellular (telecommunication) system, with or without a physical connection to a network. For the purpose of this policy, "mobile phone" refers to **mobile phones and any device** that may connect to or have a similar functionality to a mobile phone such as a smartwatch.

When a student is not complying with this mobile phone policy, we will be required to follow a process in accordance with our existing student engagement polices.



LUNCH ORDERS

Subway lunch orders are available each Friday. There is a pre-ordering system and orders must be placed via XUNO **by 4pm each Tuesday** for the Friday's lunch.

Late orders cannot be accepted.



Subway \$6

View

SAFETY

All bike and scooter riders are required to wear a bike helmet in Victoria.

Approved helmets have the Australian Standards Mark TM (AS/NZS 2063) and will be marked as suitable for cycling.

Children under the age of 12 may ride on footpaths, as can a supervising adult. They are required to give way to pedestrians and to wheel their bicycles over pedestrian and children's crossings.

Also, by law everyone must wear a seat belt when travelling in a car in Australia



BELL TIMES

08:50am	Classrooms open
09:00am	School begins
11:30am	Lunchtime (50mins)
12:20pm	Middle session
02:00pm	Recess (40mins)
02:40pm	Afternoon session
3:30pm	End of day



SAFETY EXPECTATIONS

Shared expectations of staff, parents, carers and students to support positive student behaviour are set out in the [Respectful, safe, engaged: shared expectations to support student behaviour statement](#).

- **Students** are also supported by school staff to meet expected standards of behaviour as outlined in our [Student Wellbeing and Engagement Policy, Inclusion and Diversity Policy, Bullying Prevention Policy](#)
- **Staff** must follow our school and department policies and the [Victorian Public Service Code of Conduct and Values](#). Teaching staff also adhere to the [Victorian Teaching Profession's Code of Conduct](#).
- **Parents and carers** play a vital role in helping their child understand and meet shared behaviour expectations. Additionally, information about the expectations of parents and carers to ensure schools remain respectful and inclusive places is outlined in the department's [Respectful Behaviours within the School Community Policy](#).

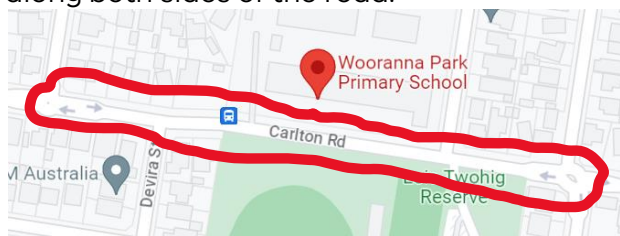


It is important that we model to our children Road Safety, by using the pedestrian crossing to cross the road and always follow the School Crossing Supervisors' directions.

As a driver you must **STOP** at the pedestrian crossings when someone is crossing the road. Please be advised that the pedestrian crossing on Apex Street is **no longer supervised**.



Please note, that while this is a convenient place to cross Carlton Road, it is not a supervised crossing and visibility is very difficult when cars are parked along both sides of the road.



Please use the roundabouts at each end of the school to safely turn around, rather than doing a U-turn in front of the school, particularly given there are a lot of young children around.



As the sign on the gate indicates, the **Staff Car Park** is for **Staff only**. The high volume of vehicles moving in and out increases the risk of accidents, especially since children may not be easily visible to drivers.



Please ensure that you travel at the **40kmph Speed Limit** around our school.

Helmets

Please make sure your child is safely fitted with a helmet before leaving home on either their bike or scooter. This illustrates that we are all working together to teach our children to stay safe and responsible whilst recognising that our young people need adult guidance and teaching on important routines such as helmets. More information of [bicycles and scooters safety](#) is available online.



The behaviour of staff, parents, carers and students has an impact on our school community and culture. We must acknowledge our shared responsibility to create a positive learning environment for the children and young people at our school

KISS & GO ZONE

We are a very lucky community with both Carlton Road and Wondalga Avenue available for parking before and after school.

It is important to understand that the parking directly outside of the school's main entry is a now **Kiss and Go Zone** before and after school. This means:

- **Do not leave your vehicle**

To assist with traffic flow, drivers should remain in the car whilst children get in and out.

- **Be timely**

If your child does not get in or out of the vehicle within 2 minutes you must leave and re-enter the Kiss & Go zone.

- **Child safety**

Please ensure children get in or out of the vehicle on the kerb side. The back seat is the safest seat for children to travel in. Ensure children have their restraints securely fastened before driving off.

- **Stay in sequence**

Drop off or pick up your child close to the top of the zone, as far forward as possible. This allows vehicles following you to enter the zone in an orderly manner.



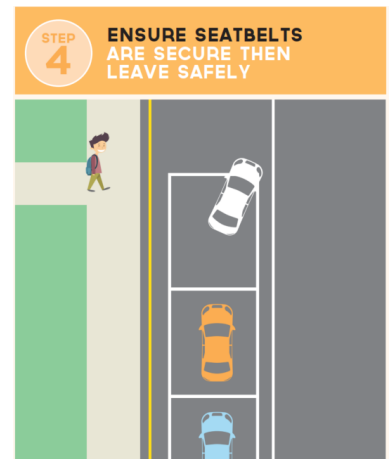
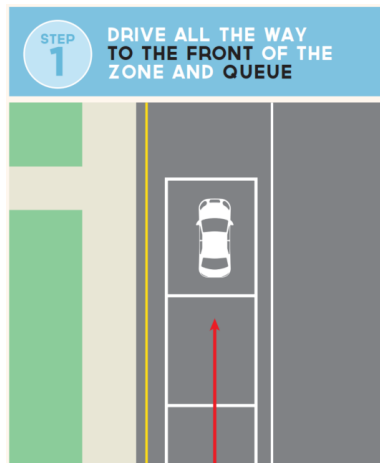
- **Driver duty of care**

Observe traffic when entering or leaving the zone. Use your indicator to advise when moving into or out of the zone.

- **No U-turns**

Do not do U-turn in busy school zones. They are dangerous and put children at risk

Please ensure that you travel at the **40kmph Speed Limit** around our school.



DS SPORTS UPDATE



We hope you and your children are doing well and enjoying a positive start to the year. We are writing to inform you of an upcoming adjustment to our daily fees, effective 2nd March, 2026.

Like many early childhood services across Victoria, we continue to experience rising operational costs, including educator wages, learning resources, utilities, and compliance requirements. To maintain the high-quality education and care your children receive — and to ensure we can continue attracting and retaining skilled educators — a fee adjustment has become necessary.

What is changing

All fees have increased by a small margin of 4.2% - This is the first year we have had to increase our fees.

From **2nd March**, our new daily fees will be:

- **[After School Care]: \$[37.51] per session (+\$1.51)**
- This adjustment allows us to continue providing:
- A safe, nurturing, and well-resourced learning environment
- High-quality educators who are supported through fair wages and professional development
- Programs that meet and exceed the National Quality Standards.

Our commitment to you

We understand that fee changes can impact family budgets, and we do not make these decisions lightly. We remain committed to transparency, quality, and open communication. If you have any questions or would like to discuss the change, please reach out to us directly.

If you wish to chat further, feel free to give the DS Sports team a call.

Warm regards,

Steven Dillon Co-Founder

For information about this program, please contact this service directly at:

<https://www.dssports.org/wooranna-park-primary>



2026 CURRICULUM DAYS

27
JAN

COACHES VS KIDS
BATTLES

28
JAN

WINTER OLYMPICS
DAY

10
MAR

MASTER CHEF &
PANCAKE PARTY

22
MAY

ARCADE DAY (NO
SCREENS NEEDED)

24
AUG

LEGO MASTERS DAY

26
OCT

SPORT COACHING
INCURSION



PROTECT

Everyone has the right to be safe and be protected from abuse.

No one should behave in a way that makes you feel unsafe or afraid, including anyone in your family, anyone at school or anywhere else in the community.

Tell a teacher or any adult at your school if you feel unsafe.



It's everyone's responsibility.

Adults at school must listen and respond to concerns about child abuse.

If you suspect abuse of any child or young person, you have a responsibility to report it, even if you are not sure.

Further information & resources
www.education.vic.gov.au/protect



2 PARKER ST,
OFFICER



104 REEMA BLD,
ENDEAVOUR HILLS



52 MAIN STH RD,
DROUIN



DSSSPORTS.ORG



0479 125 796

A scenic landscape photograph of a mountain range at sunset. The sun is low on the horizon, creating a bright glow and long shadows. The sky is filled with soft, white clouds. In the foreground, there are trees with vibrant yellow and orange autumn leaves. The overall mood is peaceful and scenic.

Autumn

ADVENTURES



Autumn ADVENTURES

**EASTER MONDAY
CLOSED**



7th

\$97 - \$9.70*

STREET GAMES SPORTS DAY

Urban-style, fast-paced activities Street Soccer, 3-3 basketball, four square challenges, chalk line agility games & more



8th

\$97 - \$9.70*

DODGEBALL SHOWDOWN DAY

Get ready to duck, dodge, and dive at Dodgeball Showdown with fast-paced games, big energy, and loads of fun!



9th

\$97 - \$9.70*

HOOPS & AMERICAN SPORTS DAY

Get ready for a packed day of sports including Basketball, Flag Football, T-ball, Lacrosse and much more!!!



10th

\$135 - \$13.50*

BOUNCE EXCURSION DAY

Bounce, flip, and soar on our Bounce Excursion — high-energy trampolines fun from start to finish!



13th

\$115 - \$11.50*

SOCCER STARS & DS GOT TALENT DAY

Show off your skills at Soccer Stars & Got Talent Day — featuring goal-scoring action and stage-ready performances all in one epic day!



14th

\$97 - \$9.70*

TEAM VS TEAM CHAMPIONSHIP DAY

Every challenge today is a chance to rise, support your teammates, and show the strength of your team spirit



15th

\$135 - \$13.50*

INFLATABLE WORLD EXCURSION

Jump, climb, and bounce your way through our Inflatable World Excursion — a day packed with high-energy, inflatable fun!



16th

\$97 - \$9.70*

ULTIMATE SPORTS DAY & AFL DAY

Get moving and bring the energy for Ultimate Sports Day — packed with fast-paced games, teamwork, and all-round fun!



17th

\$97 - \$9.70*

THE ULTIMATE PARTY FINALE

We're going out with a BANG at our Ultimate Party Finale! Join us for an action-packed day filled with games, music, laughter



*Please note that this price is an estimate. Each family must use the CCS calculator to determine their exact fee



DANDENONG

ANZAC DAY

SATURDAY 25TH APRIL

Lest We Forget

Dawn Service – 6am

Dandenong Cenotaph & Pillars of Freedom

March & Commemorative Service – 11am

Muster at Main Entry to Plaza Corner of Foster St &
McCrae St at 10:15am

SCAN TO DONATE:



Term 1 2026



Keep this handy calendar on your fridge for upcoming events at school. Check XUNO, visit [our website](#), or follow our [Facebook page](#) as this calendar is subject to changes.

	Monday	Tuesday	Wednesday	Thursday	Friday
Jan.	26	27	28 Term One begins! (Yrs 1 to 6) Don't forget your school, sun smart hat!	29 1 DAY SCHOOL Prep students start at 8:50am till 12:30pm	30 Whole School Assembly @ 2:40pm
February	02 Prep students stay at school till 2:30pm	03 Subway orders are due by 4pm each Tuesday, ready for a Friday lunch.	04 Rest day for Preps	05 DS SPORTS	06 Have you enrolled your child/ren in after school care? You never know when you may need DS Sports!
	09	10 Getting to Know You Interviews (3:40 till 5:50pm)	11 Rest day for Preps	12 XUNO Parent Briefing (3 till 4pm)	13 Whole School Assembly @ 2:40pm
	16	17	18 Rest day for Preps	19	20
	23 Full time school for Preps starts today!	24	25 Rest day for Preps	26	27 Whole School Assembly @ 2:40pm
	02	03	04 Have you presented your Health Care card to the office yet to qualify for CSEE?	05	06 Clean Up
March	09 Labour Day No School	10 DS Sports will be open all day if you need childcare! Curriculum Day No students at school	11 - 12 NAPLAN (Grade 3 & 5s)		13 Whole School Assembly @ 2:40pm
	16	17	18 - 19 NAPLAN (Grade 3 & 5s)		20 Harmony Day (Cultural dress or orange)
	23 Tag Rugby Carnival (P-2 students)	24 AGM & School Council @ 6pm	25	26 Carwatha Cup (Elected 5/6 students)	27 Team Time @ 2:40pm
	30	31	01 Cross Country	02 Golden Assembly Last Day of Term 2:30pm finish	03 Good Friday No School
April					



We are proud to acknowledge the Bunurong People as the traditional owners and custodians of the land on which Wooranna Park Primary School is located. We pay our respects to Elders past, present and emerging.



Download the **XUNO Family app** from Google Play or iOS app store to receive notifications to your phone of upcoming events, and notices!

9795 2007
www.woorannaparkps.vic.edu.au

