

Wooranna Park's Wonderings



Wednesday 29 April 2026

Hi everyone,

As we commence Term Two would like to highlight to all community members our school's Matrix of Expectations as communicated in the first newsletter of this year, and in the little brochure that your child brought home at the beginning of the year and detailed below.

I would like to reiterate the role that we **all** play in creating a safe and happy school environment, where every child has the right to learn. To enact these rights, we have shared expectations of all members of our community.



Matrix of Expectations

At Wooranna Park Primary School, we encourage all community members (students, staff and families) to always act in a manner that is respectful, safe and responsible ways.



We look after others and their property



We protect ourselves and others



We behave sensibly and make strong choices

	We look after others and their property	We protect ourselves and others	We behave sensibly and make strong choices
All Settings	<ul style="list-style-type: none"> We are calm and use appropriate language when speaking to others. We always use good manners. We listen to staff and other students. We ask permission to use other people's property and return it when we have finished using it. We are inclusive and friendly. We high five instead of hug. 	<ul style="list-style-type: none"> We keep our body parts to ourselves and respect others' personal space. We care for, look after and use equipment for its correct purposes. We stay in places where we can be seen by a staff member. We are aware of and report hazards or dangers, including strangers within our school. We eat the food that our family have provided us. 	<ul style="list-style-type: none"> We worry about ourselves and the things that affect us. We put our wrappers and scraps back into our lunchbox or in the classroom bins. We are truthful, accepting the consequences for our actions. We are resilient and empathetic. We wear our school uniform. We eat healthy food.
Classroom	<ul style="list-style-type: none"> We respect others' right to learn. We ask for permission before leaving the classroom. We work to the best of our ability. We put our hands up when we want to contribute. 	<ul style="list-style-type: none"> We ask for a teacher before entering a classroom. We are careful in the classroom. We walk inside. 	<ul style="list-style-type: none"> We prepare ourselves so we are ready to learn. We sit on time.
Outdoors	<ul style="list-style-type: none"> We look after and care for the school environment. We are mindful of our neighbours. We transition between classes in a respectful and orderly manner. 	<ul style="list-style-type: none"> We are SunSmart. We leave sticks, stones, sand and twigs on the ground. We walk our bikes and scooters in the school grounds, parking them in the bike rack as soon as we arrive at school. We always wear a helmet when riding our bike or scooter. We play and climb only on designated playground equipment. We kick balls only on the grass area and bounce balls on the basketball court. 	<ul style="list-style-type: none"> We move on the music so that we are lined up, ready to learn when the bell goes. We follow the directions of the yard duty teacher. We remain outside unless we have permission to be inside.
Toilets	<ul style="list-style-type: none"> We respect others' privacy when using the toilet. We keep the toilet and sinks clean. 	<ul style="list-style-type: none"> We ask permission to go to the toilet, and we go with a partner. 	<ul style="list-style-type: none"> We use the toilet for its correct purpose, do what we need to do, then leave. We report any problems to the office or a teacher.
Using Technology	<ul style="list-style-type: none"> We respect others' privacy and ask permission before sharing any information. We only access our own accounts. We are kind and respectful in our comments online. 	<ul style="list-style-type: none"> We protect our identity online, and we follow cyberbullying guidelines. 	<ul style="list-style-type: none"> We hand our technology devices to the office when we arrive at school. We keep our passwords and personal information to ourselves.
Lockers and bag rooms	<ul style="list-style-type: none"> We only access our own lockers or bags. We ask permission to access our bag or locker during class time. 	<ul style="list-style-type: none"> We ensure our bags are safely stored. 	<ul style="list-style-type: none"> We keep locker areas tidy. We clean up any rubbish.

As we do with our students, I am especially asking that you make an extra effort to enact the following behaviours when engaging in our school community, modelling to our children **safe, respectful and responsible** behaviours:

- We are calm and use appropriate language when speaking to others
- We help, look out for and support others
- We worry about ourselves and the things that affect us.

Let's help each other out!

💙💛 If your child happens to bring an item home that does not look like it belongs to them, can you please model to them that we take responsibility by returning it to the rightful owner.

Using Our School Crossing

The Greater Dandenong Council provides a Supervised School Crossing on Carlton Road. Supervised School Crossings protect kids from road-crossing risks as they walk to and from school. Supervisors help young children judge when it is safe to cross a road. Young children usually do not have a well-developed sense of danger or 'road sense'.



I, alongside the Greater Dandenong Council, encourage all adults to **only use the Supervised School Crossing** to set an example of good road safety behaviour. I note that many families use the traffic island to cross the road. However, this poses a danger as there are parked cars along the front of the school, making it very difficult to see upcoming pedestrians. Furthermore, many children think it is safe to cross here, often on their own, as they have seen others do it! Let's work together to role model to our children and keep all our community safe!

Further information on the Greater Dandenong Council's Supervised School Crossings and other safety information around schools can be found [on their website](#).

Parking Around Our School

We are a very lucky community with both Carlton Road and Wondalga Avenue available for parking before and after school.

Please ensure your children enter and exit your car once you have parked in the **allocated areas** and then they can safely get in or out of the car on the pavement side.

It is important to note that the parking directly outside of the school is a **Kiss and Go Zone** in both the morning and afternoons, so you must remain in your car, parking there for a maximum of 2 minutes to support traffic flow.



Also, the Staff Car Park is for **staff only**.

Please ensure you travel at **40kmph** around our school.

Doing all these actions as a collective community will provide such strong role modelling to our children on **safe, respectful and responsible** choices.



URStrong

URStrong is an integral component of our social and emotional curriculum.



URStrong's whole-school friendship strategy has improved the social climate in schools around the world, connecting over a million kids, parents/carers and teachers with a common language of friendship. We are proud to be a URStrong School and we are committed to empowering your children with friendship skills.

You are invited to take advantage of a [FREE Parent Membership](#) to access hundreds of resources – including an 8 session video series. This will allow you to learn the same language and strategies being taught in the classroom through the Friendology 101 curriculum.

We hope that as a URStrong Family, you will reinforce the important messages of empowerment, self-compassion and kindness at home.

As a next step, we would recommend:

- [Click here](#) to view an overview of URStrong.
- Activate your [FREE Parent Membership](#) and explore all the resources available to your family.
- Explore the hundreds of resources available to you!

We believe that empowering our students with these skills will create a culture of kindness at our school and we hope that together, we can support your children to have healthy, feel-good friendships.

Be You - Family Survey

This year we are working alongside Be You to promote positive mental health and wellbeing with our students, staff and families. This term senior school students and staff completed an anonymous survey to inform us on how we can continue to work together to support mental health and wellbeing within our school community.



We would like to invite families to complete a short survey on your experience as the family of your child attending Wooranna Park Primary School. The survey is anonymous and will provide the final piece of information on how we can work together to build positive mental health and wellbeing at Wooranna Park Primary School.



Please click on the link below:

https://beyou.syd1.qualtrics.com/jfe/form/SV_8BrqyFHxHoJ4DXv?survey_id=11266927521

Survey closes: **4pm on Friday 1 May.**

Child safety and wellbeing

Wooranna Park Primary School is committed to providing an environment where students are safe and feel safe.

Our child safety framework explains how we support and maintain child safety and wellbeing at Wooranna Park Primary School. It includes our:

- Child Safety and Wellbeing Policy
- Child abuse (including grooming) – identification and response, and
- Child Safety Code of Conduct, which outlines acceptable and unacceptable behaviours for all staff and volunteers at our school.

Our students and families are important partners in providing a child safe environment. These regular newsletter reminders are one of the ways we ensure our school community is aware of:

- our commitment to child safety, and
- how to provide feedback or raise child safety concerns.

If you have any concerns about child safety at any time, please contact Amanda Ellaby on 9795 2007. Any child safety complaints or concerns are treated seriously. For more information about our school's complaints process, see our Complaints Policy

We also welcome your ideas on ways we can improve our approach to child safety and wellbeing. If you have any suggestions or comments, please contact a member of leadership on 9795 2007 or at wooranna.park.ps@education.vic.gov.au



Uniform Donations

If you have any spare uniforms that your family no longer needs, we would really appreciate these to support other families. Feel free to drop them off at the front office.

We do also have a large amount of washed and clean items that are available free for you to take and name for your child/ren. Please visit the Office to take what you need.

Please take note that **Friday 22 May** is a student free day, so students are not required at school.

Please enrol with [DS Sports](#) if you need childcare for this day, ensuring that you register ASAP.

DS Sports will be open from 2:30pm till 6pm on Friday 26 June as it is the last day of this term to support families who need childcare, so please enrol your child/ren ASAP as places are limited

take
note!



Kind regards,
Amanda Ellaby
Executive Principal

FURTHER INDUSTRIAL ACTION



Dear Families and Community Members,

We thank you for your continued support and appreciation of our work.

Please be advised that AEU members will be participating in a **half day stop work on the morning of Thursday 14th May**. All other days will be normal school days.

At Wooranna Park, the school will be open. The morning will be a **reduced learning schedule and the afternoon will resume normal learning.**

Why this is happening:

- Despite ongoing negotiations between the Australian Education Union (AEU) and the state government for improved pay and working conditions, as well as previous industrial action including the statewide full day stop work last term, there is still no fair offer that adequately addresses the key issues facing public school staff.
- Victorian public schools are currently the **lowest funded** in Australia, and there are significant staffing shortages.
- Teachers, education support staff and school leaders are paid less than colleagues in other states, despite doing the same work.
- The AEU is asking for pay increases and reduced workloads to ensure schools can keep staff and continue providing high-quality education.

Additionally, as part of the industrial action, there is currently a ban on report comments.

The decision to take industrial action is not taken lightly, and staff regret any inconvenience this may cause families. The government can avoid such action by offering fair pay and conditions.

We thank you for your continued support and appreciation of our work. We truly enjoy working with your children, and we value the opportunity to support their learning. We look forward to continuing this learning journey together.

You will receive further communication from Mrs Ellaby outlining arrangements for the half day stop work.

If you have any questions about the stop work action, you may direct them to Laurel Heisman.

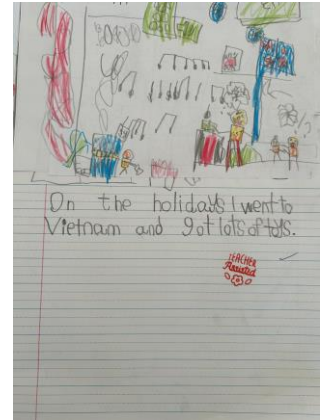
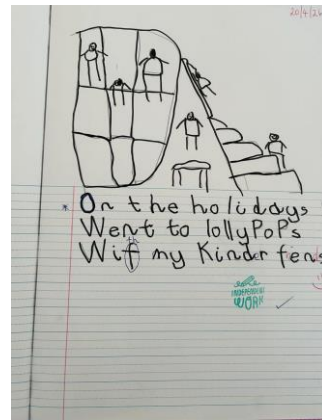
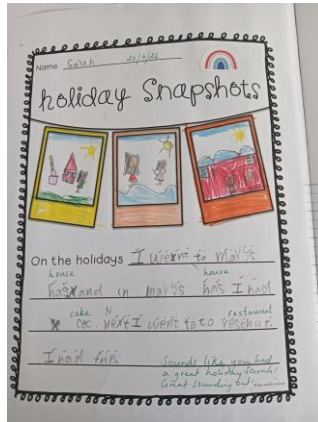
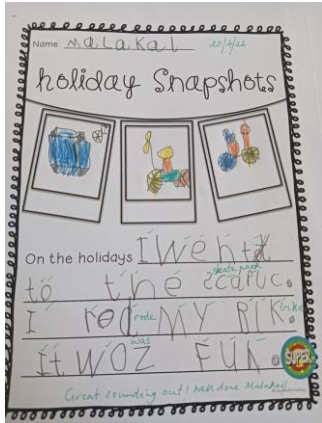
laurel.heisman@education.vic.gov.au

School Ph: (03) 9795 2007



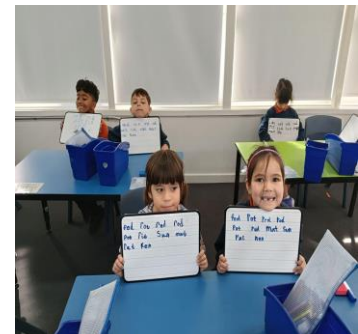
In Prep...

The students had lots of fun sharing, writing and drawing about their school holiday experiences. They eagerly recounted their favourite moments, demonstrating their early writing skills, great creativity and enthusiasm in their work.



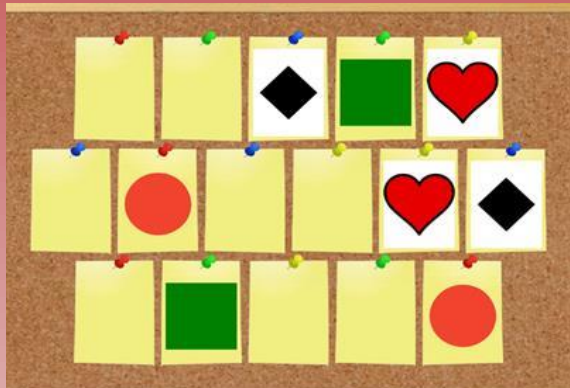
The students enjoyed making poppies for our ANZAC Day assembly and took great pride in their creations. They also listened to the book *'What Will I See on Anzac Day?'* to help them better understand the significance of the day.

The Preps have settled beautifully into Term 2 and have been revisiting the expectations and routines established earlier in the year, including our whiteboard routine. Below, the students are proudly chinning their work.



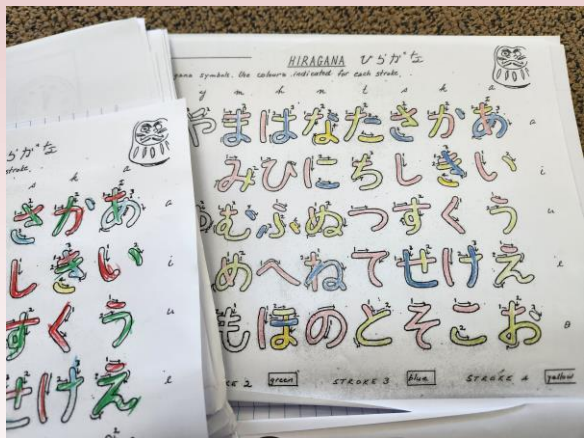


Our Prep students have been learning the names of simple shapes in Japanese such as triangle, circle, square, heart and diamond. Students then played the classic memory game to support their learning and the retention of new vocabulary.



Grade 1/2 have been learning about the names of basic body part in Japanese. Students practiced the names of body parts whilst sing along to Head, Shoulders, Knees and Toes in Japanese as well as plying games like Simons Says using all Japanese words.

Grade 3/4 continue to make strides in learning the Japanese writing system of Hiragana. Recently they looked at *stroke order* and how this important aspect of writing in Japanese affects the formation of Hiragana characters.



do ko ni su n de ru
どこにすんでる?
Where do you live?

sa ga mi ha ra shi
さがみはらし
In Sagamihara City.

bo ku mo
ぼくも!
Me too!

12

Grade 5/6 have also been continuing to refine their Hiragana writing and recently began translating short sentences from Romaji (Japanese written in the English alphabet) to Hiragana.



Year 5/6 Gala Day 1



On Friday the 24th of April, students in Year 5 & 6 represented Wooranna Park at the **Greater Dandenong District Gala Day**.

Students competed across 4 different sports

- Basketball
- Netball
- T-Ball
- Aussie Rules Football

Guided by our Year 5/6 teachers, students trained every Friday afternoon in preparation for the day. They developed their skills in their specific sport while also building their teamwork and communication skills.

The students represented WPPS proudly on Friday and came away with some fantastic results.

Basketball Boys A	3rd	Netball A	1st
Basketball Boys B	3rd	Netball B	5th
Basketball Girls A	4th	T-Ball	3rd
Basketball Girls B	1st	AFL	2nd

I would also like to recognise our award winners in each team. The two awards are:

Best & Fairest – Recognising a student who demonstrated outstanding skill and attitude

SSV Spirit of Sport – Recognising a student who represented the school with pride, and lived our school values

Team	Best & Fairest	SSV Spirit of Sport
Basketball Boys A	Stefan	Lino
Basketball Boys B	Milad	John
Basketball Girls A	Lynn	Lydia
Basketball Girls B	Zahra	Shakainah
Netball A	Wiriana	Fatimah
Netball B	Navaeha	Sienna
T-Ball	Michael	Indi
Aussie Rules Football	Mawoz	Larry

GRADES OF THE WEEK



Each week our classes earn points during their Specialists' class by:

- Respecting others' right to learn (respect)
- Caring for, looking after and using equipment for its correct purpose (safe)
- Worrying about ourselves and the things that affect us (responsible).

The class with the most points hosts Puggles for the week...and if a class wins Puggles three times then they will get a pizza party!

Congratulations to Prep B, 1/2B and 5/6C for being our grades of the week in the last week!



Semper Dental

"always looking after your oral hygiene"

www.semperdental.com.au

**The Semper Dental Van will be visiting
next Tuesday**

Have you returned your form?

Please return it to your classroom
teacher to support your child's dental
health and help secure their school
check up

Forms need to be submitted
by Friday. Any queries email:
annap@semperdental.com.au





Mother's Day Stall

Brought to you by our fundraising committee, this **Thursday 7 May**.

Gifts are available from \$1 to \$50.

Students will visit this stall with their class.

Please pack a shopping bag.

We are looking for volunteers to donate some of their time to help with the running of our very popular Mother's Day Stall.

If you are free on Wednesday 6 May from 9am till 10am, we would love your help to set up the stall ready for sales on Thursday.

Otherwise, we would appreciate your help at the stall on Thursday 6 May, either from 9am till 1:30pm or in the afternoon from 2:30pm till 4pm. Please sign up at: <https://forms.gle/uu49iPrkrYmPRyiU6>

WOORANNA PARK PRIMARY SCHOOL, DANDENONG NORTH

SchoolPix is coming to photograph on:

Friday, 15 May 2026

SIBLING ORDERS

must be placed prior to 8am on
Friday, 15 May 2026



Order at order.schoolpix.com.au

Orders with **FREE delivery**

to your school **CLOSE 5 WORKING
DAYS** after your last photography
session. A postage fee will apply for
orders placed after this date.

Misplaced your order flyer?

Please visit www.schoolpix.com.au and use
the student search to find your child's unique
ID or contact our **Customer Care team** on
1300 766 055 or help@schoolpix.com.au.

FUTURE ENROLMENTS

If you have a child who will be starting Prep in 2027, please visit or call the Office to organise an interview with one of our leadership members.

This process helps us to get to know your little one in support of their transition to school.

If you know of a family who is wanting to join the Wooranna Park community in 2026, please encourage them to call the Office to organise a school tour.

Details about the 2027 Prep enrolment process can be found on our website at <https://www.woorannaparkps.vic.edu.au/page/12/Enrolment>

**Prep
enrolments
for 2027!**



Wooranna Park Primary School

**Carlton Road,
Dandenong North**

Meet our Principal at an
information evening on

Monday 25 May or
Wednesday 17 June

from 5pm till 6pm.



<https://www.woorannaparkps.vic.edu.au/>

Call for a school tour
9795 2007



Stories to discover.
Stories to tell.

Victorian Premiers' Reading Challenge 2026

Dear parent/carer,

The Victorian Premiers' Reading Challenge is now open, and we're excited to be taking part!

All children from birth to Year 10 are welcome to join in.

This year's Challenge theme is 'Stories to discover. Stories to tell'. Stories can inspire and challenge us and help us grow. They open our eyes to new worlds and new ways of thinking.

The number of books read can be varied for everyone's needs.

All children who complete the Challenge will receive a certificate of achievement signed by the Victorian Premier and former premiers.

To learn more about the Challenge, visit [Premiers' Reading Challenge | vic.gov.au](https://www.vic.gov.au/premiers-reading-challenge)

Students will receive their logins from their teacher while there is also a paper record sheet option. You can also contact Ms. Giselle, our Challenge Coordinator, with any questions.

Happy reading!

Ms. Giselle



EVERY DAY COUNTS

SAME-DAY NOTIFICATION OF UNEXPLAINED STUDENT ABSENCES

FACT SHEET FOR PARENTS/CARERS

If your child is sick or absent, you are required to notify their school as soon as possible **on the day of absence** using one of the following methods:

1. **Online:** log the absence directly using your school's IT platform.
2. **Telephone:** the school office and let the staff know your child's name, class, date of absences and reason.
3. **Email:** the school and provide the staff with your child's name, class, date of absences and reason.

Notifying the school of your child's absence either prior to, or on the day that they will be away, helps ensure the safety and wellbeing of children and will fulfil your legal responsibility.

Why do I need to notify the school if my child is absent?

Schools need to know when and why a child is absent and you need to know if your child isn't at school.

From the end of Term 2 2018, all Victorian government schools are required to contact parents/carers as soon as practicable on the same day of an unexplained student absence. If your child is absent on a particular day and you have not contacted the school to explain why, the absence will be marked as unexplained.

This system also promotes daily school attendance. Going to school every day is the single most important part of your child's education, they learn new things every day – missing school puts them behind.

What is your responsibility?

You are legally required to ensure your child attends school every day or you must provide an explanation for their absence. You should let the school know in advance of any upcoming absences or let them know in the morning if your child won't be at school. In order for schools to implement the same day notification requirement, it's essential that you provide the school with your most up-to-date contact details.

Generally one notification will be sent per family. Should there be circumstances that require both parents and carers to be notified, please contact the school to make the necessary arrangements.

If a student reaches five days of unapproved or unexplained absence in the preceding 12 months, and after it is shown that appropriate supports or interventions to assist them to attend school every day does not improve their attendance, the principal may decide to make a referral to the School Attendance Officer. This person is the Regional Director of the Department's Regional Office where you are located.



EVERY DAY COUNTS

The School Attendance Officer will investigate the student absence records and may take one or all of the following steps depending on the circumstances.

- Issue a School Attendance Notice
- Issue an Official Warning
- Issue an Infringement Notice

The infringement notice for 2024/25 is \$99. The amount changes each financial year¹.

What is the school's responsibility?

The school must notify you of an unexplained absence in relation to your child as soon as practicable on the same day.

Schools will let you know either by your school's online communications app, SMS, phone call or email. If you can't be reached because the school does not have your correct contact details (i.e. changed phone number, SMS/email failure notification received etc.), the school will attempt to make contact with any emergency contact/s nominated on your child's file held by the school. Where possible, this contact will be made on the same day of the unexplained absence.

Where can I learn more about the process for managing student absences?

Ask your school for a copy of the *Attendance Policy* which outlines the school's processes and procedures for monitoring, recording and following-up of student absences.

¹ Last updated October 2024

FACEBOOK & WEBSITE

A few posts have been put up on our website over the past week. Please make sure you visit the home page and scroll down to catch up.

<https://www.woorannaparkps.vic.edu.au/>



School Photos

SchoolPix is coming to photograph our smiling student on **Friday 15 May**. Make sure you get your order in online to get the early bird special.

[READ MORE](#)



Dental Van Onsite - Term One

Semper Dentist has a long standing history with Wooranna Park!

[READ MORE](#)

PROTECT

Protecting children & young people from abuse is our responsibility



Child safety and wellbeing policies

Wooranna Park Primary School is committed to providing a child safe and child friendly environment, where students are safe and feel safe.

[READ MORE](#)



Parent Contributions

We will be accepting your contributions for 2026, ideally via XUNO (Events and Fees) from **21 January 2026** or alternatively the school will be open as of **27 January 2026** to receive parent contributions via EFTPOS.

[READ MORE](#)



UNIFORM REMINDERS

The wearing of school uniform is compulsory at Wooranna Park Primary School. For our full uniform, please see the school website. All our uniform pieces can be purchased at **PSW, Unit 1, 9-11 South Link, Dandenong South, 3157**



Orange Short Sleeve
Polo Shirts



Navy Blue
Windcheater



Navy Blue
Bomber Jacket



Summer Dress



Navy Blue tracksuit
pants/full length
leggings No Jeans



Navy Blue Rugby or
Gaberdine Shorts/Skort



Navy Blue Hat



Orange Long Sleeve
Polo Shirt



Socks –
White, Black, Navy



Sport Shoes or Black Shoes



Gloves and Scarves
(White, Black, Navy)

The following items are not permitted as a part of our uniform:

Jewellery



Long Earrings



Nail Polish



Make-Up



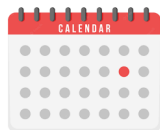
Please clearly label all clothing items including shoes.

IMPORTANT DETAILS

CURRICULUM DAYS

The following days have been endorsed by School Council:

- Friday 22 May
- Monday 24 August
- Monday 26 October



Students do not attend school on these days. DSSports will be providing childcare on these days.

On the last day of Terms One, Two and Three we have an early dismissal time of **2:30pm** and on the last day of Term Four we finish at **1:30pm**.

COMMUNICATION

Wooranna Park Primary School recognises the importance of the partnership between schools and families to support student learning, engagement and wellbeing.

Your child's teacher will offer you a range of opportunities to communicate with them including:

- ✓ XUNO
- ✓ School diary
- ✓ Formal meetings
- ✓ Before/After school chats

If you do not have access to XUNO please contact our school Office and find out how you can obtain it as XUNO will be used several times each week so we want everyone to have access.



FACEBOOK

Please like our [Facebook page](#). This page will be used by the school to inform families and the public of events and updates at the school. Feedback and discussion with parents/carers are welcome, but the school will not use Facebook for this purpose.

Please contact the school directly if you wish to discuss matters, as per our communication process. Only this [Facebook page](#) is endorsed by the Principal. Any other Facebook pages are not officially authorised representatives of the school.



CONTACT DETAILS

It is very important the school has your most current emergency contact telephone details, home and e-mail address.

If you change telephone details or home and e-mail address at any point, we ask that you update the school with your accurate contact details as soon as possible.

بسیار مهم است شماره تماس اضطراری
و آدرس دقیق خانه شما
را ما در مکتب داشته باشیم

اگر شما شماره تلفون یا آدرس خود را تغییر
میدهد لطفاً هر چه
زودتر مکتب را اطلاع دهید



STUDENT SUPERVISION

Please note that our school grounds are supervised by school staff at the following times:

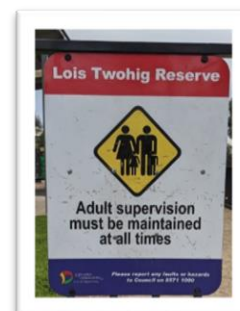
- Before school from 8:30am to 9am
- Throughout recess and lunch
- After school from 3:30pm to 3:45pm.

Our gates are locked each afternoon at 3:45pm. Students in the school grounds after this time will be cared for at [DSSports](#) at the family's expense.

The school grounds are not supervised outside of the above times.

It is important that families understand that the park, opposite the school, is not supervised by staff before or after school.

While some families use this area as a meeting place, please know children must be supervised by an adult, as per the Greater Dandenong Council's direction.



BREAKFAST CLUB



Breakfast is available for all students from 8:15am.

MORE IMPORTANT DETAILS

OUT OF HOURS SCHOOL CARE



DS Sports will be providing Outside School Hours Care at Wooranna Park Primary School from 3.30pm to 6pm, every afternoon, Monday to Friday.

DS Sports provides an adventurous and stimulating After School Care program, in a safe and inclusive environment.

DS zones are a place for growth and nurture the building of life-time skills. Our zones incorporate Health, Play, Leisure, Language, Real Life Connections and promotes the building of positive relationships with peers and our staff.

All families are strongly encouraged to register their child/ren for DS Sports as it is free to enrol and while you are under no obligation to use this service it does provide support for you in the event of an emergency. For information about this program, please contact this service directly at:

<https://www.dssports.org/wooranna-park-primary>

MOBILE DEVICES

In line with the Department of Education's [Mobile Phone policy](#), all phones brought to school must be switched off and stored securely in the front Office, during the school day.

A **mobile phone** is a telephone with access to a cellular (telecommunication) system, with or without a physical connection to a network. For the purpose of this policy, "mobile phone" refers to **mobile phones and any device** that may connect to or have a similar functionality to a mobile phone such as a smartwatch.

When a student is not complying with this mobile phone policy, we will be required to follow a process in accordance with our existing student engagement policies.



LUNCH ORDERS

Subway lunch orders are available each Friday. There is a pre-ordering system and orders must be placed via XUNO **by 4pm each Tuesday** for the Friday's lunch.

Late orders cannot be accepted.



Subway \$6

View

SAFETY

All bike and scooter riders are required to wear a bike helmet in Victoria.

Approved helmets have the Australian Standards Mark TM (AS/NZS 2063) and will be marked as suitable for cycling.

Children under the age of 12 may ride on footpaths, as can a supervising adult. They are required to give way to pedestrians and to wheel their bicycles over pedestrian and children's crossings.

Also, by law everyone must wear a seat belt when travelling in a car in Australia



BELL TIMES

08:50am	Classrooms open
09:00am	School begins
11:30am	Lunchtime (50mins)
12:20pm	Middle session
02:00pm	Recess (40mins)
02:40pm	Afternoon session
3:30pm	End of day



SAFETY EXPECTATIONS

Shared expectations of staff, parents, carers and students to support positive student behaviour are set out in the [Respectful, safe, engaged: shared expectations to support student behaviour statement](#).

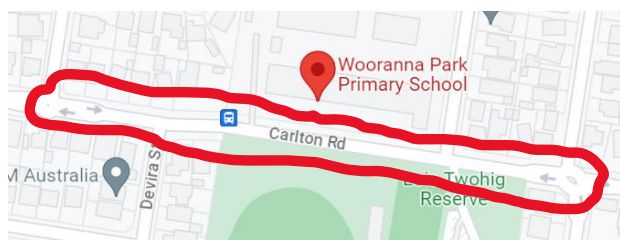
- **Students** are also supported by school staff to meet expected standards of behaviour as outlined in our [Student Wellbeing and Engagement Policy](#), [Inclusion and Diversity Policy](#), [Bullying Prevention Policy](#)
- **Staff** must follow our school and department policies and the [Victorian Public Service Code of Conduct and Values](#). Teaching staff also adhere to the [Victorian Teaching Profession's Code of Conduct](#).
- **Parents and carers** play a vital role in helping their child understand and meet shared behaviour expectations. Additionally, information about the expectations of parents and carers to ensure schools remain respectful and inclusive places is outlined in the department's [Respectful Behaviours within the School Community Policy](#).

It is important that we model to our children Road Safety, by using the pedestrian crossing to cross the road and always follow the School Crossing Supervisors' directions.

As a driver you must **STOP** at the pedestrian crossings when someone is crossing the road. Please be advised that the pedestrian crossing on Apex Street is **no longer supervised**.



Please note, that while this is a convenient place to cross Carlton Road, it is not a supervised crossing and visibility is very difficult when cars are parked along both sides of the road.



Please use the roundabouts at each end of the school to safely turn around, rather than doing a U-turn in front of the school, particularly given there are a lot of young children around.



As the sign on the gate indicates, the **Staff Car Park** is for **Staff only**. The high volume of vehicles moving in and out increases the risk of accidents, especially since children may not be easily visible to drivers.



Please ensure that you travel at the **40kmph Speed Limit** around our school.

Helmets

Please make sure your child is safely fitted with a helmet before leaving home on either their bike or scooter. This illustrates that we are all working together to teach our children to stay safe and responsible whilst recognising that our young people need adult guidance and teaching on important routines such as helmets. More information of [bicycles and scooters safety](#) is available online.



The behaviour of staff, parents, carers and students has an impact on our school community and culture. We must acknowledge our shared responsibility to create a positive learning environment for the children and young people at our school

KISS & GO ZONE

We are a very lucky community with both Carlton Road and Wondalga Avenue available for parking before and after school.

It is important to understand that the parking directly outside of the school's main entry is a now **Kiss and Go Zone** before and after school. This means:

- **Do not leave your vehicle**

To assist with traffic flow, drivers should remain in the car whilst children get in and out.

- **Be timely**

If your child does not get in or out of the vehicle within 2 minutes you must leave and re-enter the Kiss & Go zone.

- **Child safety**

Please ensure children get in or out of the vehicle on the kerb side. The back seat is the safest seat for children to travel in. Ensure children have their restraints securely fastened before driving off.

- **Stay in sequence**

Drop off or pick up your child close to the top of the zone, as far forward as possible. This allows vehicles following you to enter the zone in an orderly manner.

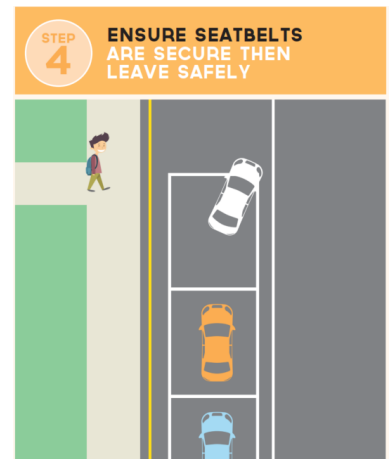
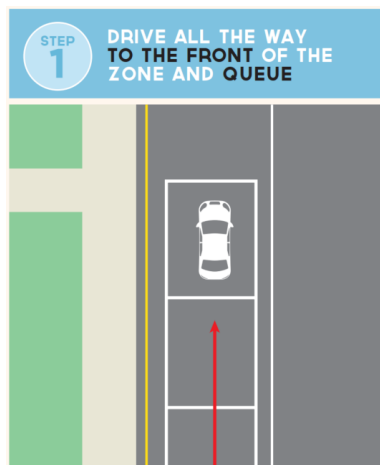
- **Driver duty of care**

Observe traffic when entering or leaving the zone. Use your indicator to advise when moving into or out of the zone.

- **No U-turns**

Do not do U-turn in busy school zones. They are dangerous and put children at risk

Please ensure that you travel at the **40kmph Speed Limit** around our school.





2026 CURRICULUM DAYS



22
MAY

ARCADE DAY (NO
SCREENS NEEDED)

24
AUG

LEGO MASTERS DAY

26
OCT

SPORT COACHING
INCURSION



WOORANNA PARK PRIMARY SCHOOL

PROTECT

Everyone has the right to be safe and be protected from abuse.

No one should behave in a way that makes you feel unsafe or afraid, including anyone in your family, anyone at school or anywhere else in the community.

Tell a teacher or any adult at your school if you feel unsafe.



It's everyone's responsibility.

Adults at school must listen and respond to concerns about child abuse.

If you suspect abuse of any child or young person, you have a responsibility to report it, even if you are not sure.

Further information & resources
www.education.vic.gov.au/protect

NOBLE PARK JUNIOR FOOTBALL CLUB

Aussie Rules Football for Kids



Come and Play!

“

AUSKICK

AGES 4-6 YEARS

The perfect introduction to footy - fun, skills & new friends



”

“

SUPERKICK

AGES 7 - 12 YEARS

step it up with skills, teamwork & modified play



”

“

Junior AFL

AGES 7-17 YEARS

Full season across all age groups. A club that grows with your kids - from their first season all the way through to under 17's



”

“

GIRLS

GIRLS ONLY TEAMS

Dedicated girls-only teams in a safe, supportive, and fun environment. we welcome players of all experience levels - come along and give it a go



”

Something for everyone

GET YOUR KIDS ON THE FIELD



Free Club registration!

For more information or to find the right program for your child, get in touch!



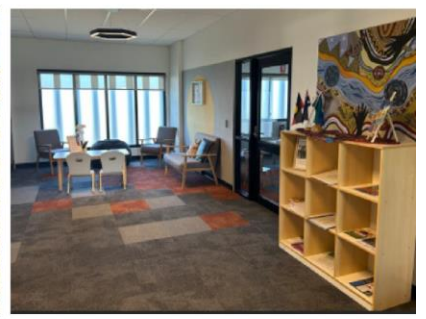
Call or text

0438 921 516



Find us on Facebook

<https://www.facebook.com/nobleparkjuniorsfc>



=Rosewood Downs Uniting Kindergarten Open Night !



Why choose us?

- **Weekly Library Sessions** — Growing early literacy and a love of books.
- **Breakfast club**- helping families with the morning rush and ensuring every child has access to breakfast.
- **Strong School Partnerships** — Confident, supported transitions into primary school.
- **Play-Based Literacy & Numeracy** — Hands-on experiences that build core skills.
- **High Child Safety Standards** — Thorough educator screening for a safe environment.
- **Incursions & Excursions** — Fun, real-world learning such as dental check-ups, African drumming, museum, excursions to schools and more
- **Music & Movement Sessions** — Activities that support coordination, rhythm, and expression

When: Friday the 1st May 2026

Time: 4.30pm-6.00pm

Where: 41 Rosewood Downs Uniting Kindergarten (right next to the primary school)

Come along for:

- free BBQ (Halal and vegetarian sausage available)
- Free Art and Craft activities
- Free sensory activities
- Free face painting
- talk to our amazing educators about how we can support your child's early education.

Attention: Do you have a toddler? Come along to our Open Night and talk to our educators.

Please register for catering purposes!

Learn more
rosewooddowns.els@vt.uniting.org

Uniting



AFTER SCHOOL SPORTS PROGRAMS

FIRST SESSION = FREE TRIAL



DAY & TIME

Mon & Wed
5:30-6:30pm

AGE

5-11
Years old

PRICE

\$15/
session



Springvale Indoor Sports

REGISTER

PARTIES

SPACE JUMP PARTY

\$250/10 KIDS

SPORTS PARTY

\$300/10 KIDS

DODGEMCAR PARTY

\$310/10 KIDS

BUBBLE SOCCER PARTY

\$320/10 KIDS

NERF PARTY

\$320/10 KIDS

LASER TAG PARTY

\$320/10 KIDS



Term 2 2026



Keep this handy calendar on your fridge for upcoming events at school. Check XUNO, visit [our website](#), or follow our [Facebook page](#) as this calendar is subject to changes.

	Monday	Tuesday	Wednesday	Thursday	Friday	
April	20 Term Two begins See you from 8:50am, to be ready to learn at 9am!	21	22 Prep (2027) enrolment packs are available!	23  ANZAC commemoration @ 2:40pm	24  Gala Day (5/6s)	
	27  SPORTS	28 Have you enrolled your child/ren in after school care? You never know when you may need DS Sports!	29 Responsible Pet Ownership Incursion (3/4s) 	30	01	
May	04 	05 Japanese Children's Day 	06  Dental Van onsite		08 Mother's Day morning tea @ 11am (Preps)	
	11 Have you presented your Health Care card to the office yet to qualify for CSEF ? You have until June 28 to access these funds.	12	13  Werribee Zoo Excursion (3/4s)	14	15 ES Personnel Day  School photos day	
	18	19 School Council @ 6pm	20 	21 National Simultaneous Storytime District Cross Country (Selected students)	22 DS Sports will be open all day if you need childcare! Curriculum Day No students at school	
	25 2027 Prep Information Evening (5-6pm)	26	27	28 	29 Forest Edge Camp (5/6s)	
	01  Have you Liked our school's official Facebook page ? We post information regularly!	02	03	04	05  Hot Chocolate today for \$1! Whole School Assembly @ 2:40pm	
June	08 King's Birthday No School	09 	10 The Arts Show from 2:40pm till 4:30pm 	11	12 Toolbox incursion (5/6s)	
	15 Annual Reporting Meeting @ 2:40pm (All welcome)	16 School Council @ 6pm	17 2027 Prep Information Evening (5-6pm)	18	19 Dress up day , planned by JSC! Team Time @ 2:40pm 	
	22	23	24 Student reports available on XUNO	25	26 Golden Assembly @ 12:20pm  Last Day of Term 2:30pm finish	



We are proud to acknowledge the Bunurong People as the traditional owners and custodians of the land on which Wooranna Park Primary School is located. We pay our respects to Elders past, present and emerging.



Download the **XUNO Family app** from Google Play or iOS app store to receive notifications to your phone of upcoming events, and notices!

9795 2007
www.woorannaparkps.vic.edu.au

