

Wooranna Park's Wonderings



Wednesday 13 May 2026

Hi everyone,



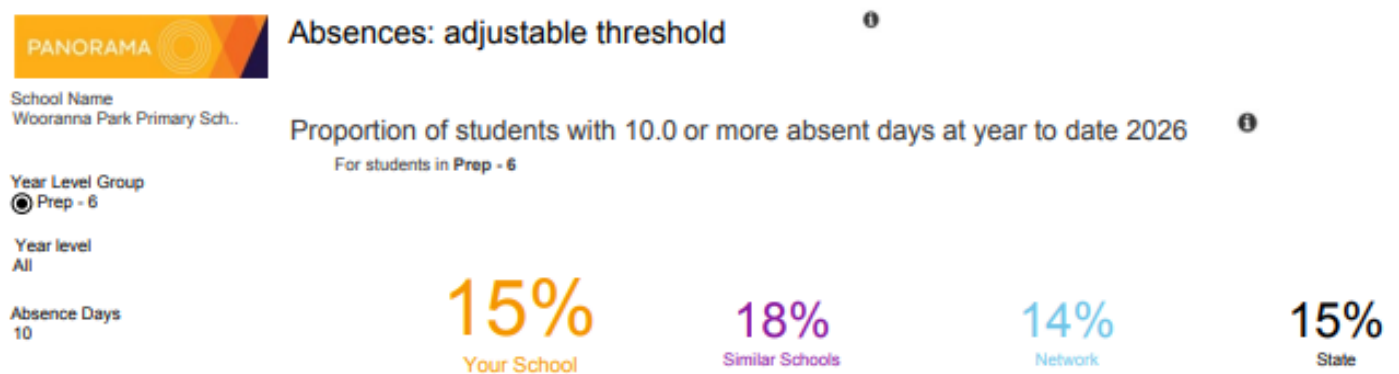
Mother's Day

Thank you to our Fundraising Committee and volunteers for their efforts in making the Mother's Day shopping experience happen for our children, from setting up the day before, to supporting the stall on the day and then packing it up in the afternoon. A big shout out to **Cassie, Dawn, Elinor, Issy, Jill, Jess,** and **Odelia** in addition to our **Student Advisory** and **Junior School Council Leaders**.

We hope all our Mums and Special People had a lovely day on Sunday and liked the gifts purchased for them!

Importance of School Attendance

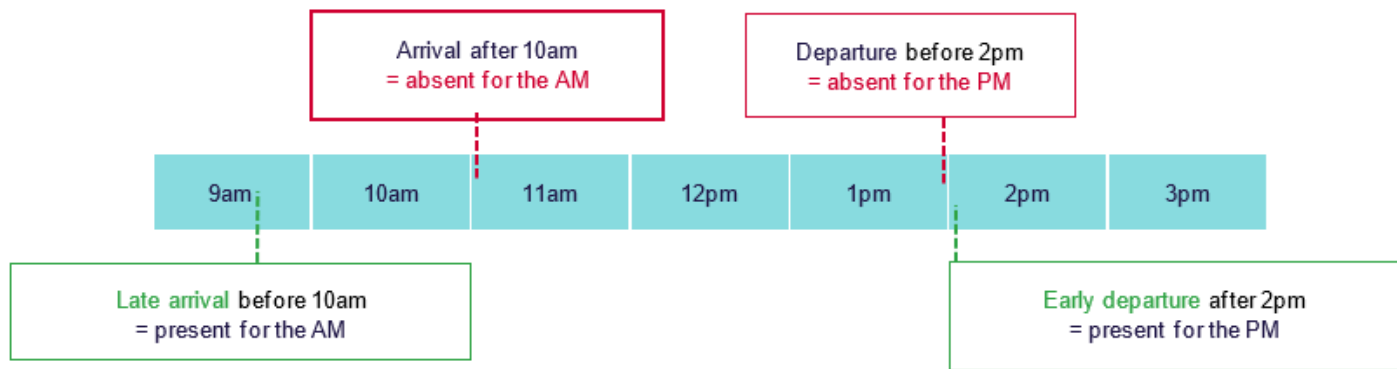
I am writing to bring to your attention an important matter concerning our students' attendance. Currently, our school's number of absence days is the **same as the state average**. Whilst this is a pleasing result, we need to keep working hard together to ensure our children are attending school consistently.



Regular attendance is crucial for your child's academic success and overall wellbeing. When students attend school consistently, they benefit from continuous learning, social interactions and the structured environment that supports their growth and development. Absences can disrupt their learning process, making it harder for them to keep up with their peers and achieve their full potential.

We understand that there are times when absences are unavoidable due to illness or other valid reasons. **However, we encourage you to prioritise your child's attendance and ensure they are present at school whenever possible.**

Arriving on time is equally important as it sets the tone for the rest of the day.



When students are punctual, they:

- 1. Start the Day Right:** Being on time helps students settle into their routine, participate in morning activities and receive important instructions for the day.
- 2. Develop Good Habits:** Punctuality fosters responsibility and time management skills that are essential for future success.
- 3. Avoid Disruptions:** Late arrivals can be disruptive to the class and can cause your child to miss out on valuable learning time.

We understand that there are times when absences or tardiness are unavoidable due to illness or other valid reasons. However, we encourage you to prioritise your child's attendance and punctuality.



School Photos Reminder

Just a reminder that school photos will be taken on **Friday 15 May**.



Students are required to:

- ✓ Arrive at school on time
- ✓ Wear their full school uniform

- ❑ All photo orders must be completed online (no cash will be collected at school).
- ❑ Each student received a flyer with a unique ID code for ordering
- ❑ Sibling photo orders must be placed online before 8:00am on photo day.

If you have misplaced your child's ID code, please contact the school office for assistance.

THANKS
FOR
BEING
AWESOME

This Friday we will also be celebrating our **Support Staff** as it is Education Support Staff Appreciation Day.

I am sure you would join with me in thanking this group of staff who work tirelessly in support of our whole community. They are everywhere, helping in the Office, managing first aid and in the classrooms, ensuring all our students' needs are met.

Thank you for the wonderful work that you do at Wooranna Park Primary School, Education Support Staff!

Students' Attitude to School Survey

This week, I have worked with our grade four to six classes to find out what they think of our school, in the interest of improving student engagement, wellbeing and quality instruction. This process will be conducted as an online survey, offered by the Department of Education, to assist schools in gaining an understanding of students' perception and experience of school. Our school will use the survey results to plan programs and activities to improve your child's schooling experience. More specific information about this survey was communicated to our grade four to six families via XUNO.

**take
note!**

A yellow pencil with a pink eraser and a sharpened lead tip, pointing upwards towards the text 'take note!'.

Please take note that **Friday 22 May** is a Student Free Day.

DS Sports will be open from 7:30am till 6pm on this day to support families who need childcare, so please enrol your child/ren ASAP as places are limited, at:

https://prodadmin.myxplor.com/enrollment_v2/centre/ftJ9M6mTw1AtPCyqOf3k0A

Kind regards,
Amanda Ellaby
Executive Principal

This Friday!

SCHOOLPIX PHOTOGRAPHY
THE BEST CHOICE

WOORANNA PARK PRIMARY SCHOOL, DANDENONG
NORTH

SchoolPix is coming to photograph on:

Friday, 15 May 2026

SIBLING ORDERS

must be placed prior to 8am on
Friday, 15 May 2026



Order at order.schoolpix.com.au

Orders with **FREE delivery**

to your school **CLOSE 5 WORKING DAYS** after your last photography session. A postage fee will apply for orders placed after this date.

Misplaced your order flyer?

Please visit www.schoolpix.com.au and use the student search to find your child's unique ID or contact our **Customer Care team** on **1300 766 055** or help@schoolpix.com.au.

LEARNING GOALS

This table outlines the learning goals that the teachers' have set for their year levels for this term. The skills and knowledge gained through the Literacy and Numeracy teaching will be applied throughout the cohort's inquiry unit.

	Literacy	Numeracy
Prep	<ul style="list-style-type: none"> Using knowledge of letters and sounds to read and spell consonant-vowel-consonant(CVC) words. Recognising that sentences are made up of groups of words that work together in particular ways to make meaning. Ordering and discussing events in texts, and connecting them to their own experiences. Developing speaking and listening skills by sharing experiences and questions through Show and Tell. 	<ul style="list-style-type: none"> Recognising and naming the number of objects within a collection up to 10 using subitising. Representing practical situations involving addition and subtraction using physical materials and applying counting strategies such as part-part-whole or counting on. Sorting, naming and creating familiar shapes, and recognising them within the environment. Naming, representing and ordering numbers to 20, using physical materials.
Years 1/2	<ul style="list-style-type: none"> Writing and expanding simple and compound sentences, and applying correct sentence punctuation. Identifying and using the structure and language features of fables, procedures and persuasive texts to plan and create their own texts. Reading, discussing and responding to a range of texts, including retelling key events and ideas orally and in writing. Developing phonics and word knowledge, including blending, segmenting, and prefixes and suffixes, to support reading, spelling and word meaning. 	<ul style="list-style-type: none"> Applying place-value knowledge to partition, rearrange, rename and regroup one, two and three digit numbers to assist in calculations. Using a range of strategies to solve simple addition and subtraction problems with confidence and accuracy. Creating skip counting and repeating patterns using numbers, symbols and objects and identifying the repeating unit. Utilising uniform informal units to measure, compare, and order objects by length, and communicate my reasoning.
Years 3/4	<ul style="list-style-type: none"> Identifying literary devices, such as rhythm and onomatopoeia, and understanding how they add meaning to a text. Focussing on text structures to sequence and connect ideas and to develop paragraphs to create factual recounts. Expanding vocabulary by looking at words associated with the literature studies text and using them in context. Reading fluently for meaning, re-reading and self-correcting when needed. 	<ul style="list-style-type: none"> Finding equivalent of fractions using related denominators. Recognising and representing unit fractions and their multiples in different ways. Investigating number sequences involving multiples of 3, 4, 6, 7, 8 and 9. Explaining and comparing the geometric properties of two-dimensional shapes and three-dimensional objects

LEARNING GOALS Continued

Literacy

Numeracy

Years
5/6

- Using phonic and morphemic knowledge to support reading comprehension and vocabulary development.
 - Building and spelling new words using knowledge of known words, base words, prefixes and suffixes.
 - Identifying clauses and phrases including independent and dependent clauses and using subordinate and coordinating conjunctions appropriately.
 - Creating and presenting texts with sequenced ideas and appropriate text structures.
- Comparing and ordering fractions with the same and related denominators including mixed numerals and representing them on a number line.
 - Applying knowledge of factors and multiples to compare and simplify fractions.
 - Using place value to write, order and place decimals on a number line.
 - Describing and performing translations, reflections and rotations of shapes.

Sports provide a good opportunity to **engage your child in maths**, particularly if they are a keen sportsperson. Here are some questions to ask your child when watching or playing their favourite sport:

- How does your favourite sport tally the score? What maths is presented on the tally?
- How do other sports tally the score – for example, tennis, golf, cricket, netball, football?
- What maths do you use to find the total of the scores?
- Who is at the top of the ladder? How is this determined?
- Are there other ways to record the score?
- How long do your favourite sport games go for in minutes and seconds? How is the time in the game divided? Into halves, quarters or something else?
- What are the shapes of different playing fields and courts? Talk about edges and angles.
- How can you estimate the perimeter and area of a playing field?
- How many cars could be parked on the MCG field or at your local sports ground? How could we work this out?



SHARING OUR



OF LEARNING

PREPS

Kicking & PMP



Students have been learning how to kick a stationary ball. We have been learning how to kick by using the phrase 'Swing'. We have also begun our PMP program, which aims to provide students with opportunities to develop their balance, coordination, core control and teamwork.

Year 1/2

AFL



Students have been learning how to punt an Aussie Rules Footy. We have been learning how to perform the skills of a kick and handball. We then applied our skills in a game of AFL

Year 3/4

Basketball



Students have been learning how to apply their skills of throwing, catching and running to Basketball. Students have begun playing an in-class tournament that will run from Week 3-5.

Year 5/6

Net/Wall sports



Students have been learning about Net/Wall games and the strategies we use, exploring how strategies are transferred across similar sports. They are preparing to play an in-class Volleyball and Badminton tournament in Weeks 4&5.

STUDENT ADVISORY MESSAGE



___Student Advisory Committee Bus Tour - Newsletter 2026 ___

Hello! We are Bree and Ralph from the Student Advisory Group, and on the 8th of May, we got the opportunity to go on a Bus Tour around Greater Dandenong, learning about the history of well-known buildings and sites in our community. We went to the Drum Theatre, Noble Park Aquatic Centre (also known as NPAC), and Alex Wilkie Nature Reserve.



Some things we got to learn about the locations were the fact that the Drum Theatre has something called the Fly Tower, which is a rope system that is used for backdrops and heavy sets. The entire building itself used to be the old town hall, but some of it got knocked down to become the great theatre we all know today.

Now onto the Noble Park Aquatic Centre, its history is that a woman named May Jones nearly drowned while she was learning how to swim

back when she was ten years old, and soon became an advocate to build pools and to help teach children how to swim. "Water for all" is also the motto for NPAC. Finally, some facts on Alex Wilkie Nature Reserve are that there used to be many mammals roaming their reserve, such as kangaroos, wombats, possums and echidnas, and more. But due to cats and foxes hunting them, they eventually became extinct in that area.

We even got free items to keep, like a variety of plants, a pack with fun activities, and free food, like fruit tarts, scones, and an assortment of fruit! Overall, it was a very fun and exciting experience to have as it was the first-ever bus tour for the Student Advisory Group in history.



GRADES OF THE WEEK



Each week our classes earn points during their Specialists' class by:

- Respecting others' right to learn (respect)
- Caring for, looking after and using equipment for its correct purpose (safe)
- Worrying about ourselves and the things that affect us (responsible).

The class with the most points hosts Puggles for the week...and if a class wins Puggles three times then they will get a pizza party!

Congratulations to 1/2B, 1/2C, 3/4C and 5/6D for being our grades of the week in the last week!

FUTURE ENROLMENTS

If you have a child who will be starting Prep in 2027, please visit or call the Office to organise an interview with one of our leadership members.

This process helps us to get to know your little one in support of their transition to school.

If you know of a family who is wanting to join the Wooranna Park community in 2026, please encourage them to call the Office to organise a school tour.

Details about the 2027 Prep enrolment process can be found on our website at <https://www.woorannaparkps.vic.edu.au/page/12/Enrolment>

**Prep
enrolments
for 2027!**



Wooranna Park Primary School

**Carlton Road,
Dandenong North**

Meet our Principal at an
information evening on

Monday 25 May or
Wednesday 17 June

from 5pm till 6pm.



<https://www.woorannaparkps.vic.edu.au/>

Call for a school tour
9795 2007



Stories to discover.
Stories to tell.

Victorian Premiers' Reading Challenge 2026

Dear parent/carer,

The Victorian Premiers' Reading Challenge is now open, and we're excited to be taking part!

All children from birth to Year 10 are welcome to join in.

This year's Challenge theme is 'Stories to discover. Stories to tell'. Stories can inspire and challenge us and help us grow. They open our eyes to new worlds and new ways of thinking.

The number of books read can be varied for everyone's needs.

All children who complete the Challenge will receive a certificate of achievement signed by the Victorian Premier and former premiers.

To learn more about the Challenge, visit [Premiers' Reading Challenge | vic.gov.au](https://www.vic.gov.au/premiers-reading-challenge)

Students will receive their logins from their teacher while there is also a paper record sheet option. You can also contact Ms. Giselle, our Challenge Coordinator, with any questions.

Happy reading!

Ms. Giselle

FACEBOOK & WEBSITE

A few posts have been put up on our website over the past week. Please make sure you visit the home page and scroll down to catch up.

<https://www.woorannaparkps.vic.edu.au/>



School Photos

SchoolPix is coming to photograph our smiling students on **Friday 15 May**. Make sure you get your order in online to get the early bird special.

[READ MORE](#)



Parent Contributions

We will be accepting your contributions for 2026, ideally via XUNO (Events and Fees) from **21 January 2026** or alternatively the school will be open as of **27 January 2026** to receive parent contributions via EFTPOS.

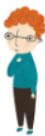
[READ MORE](#)

Child safety and wellbeing policies

Wooranna Park Primary School is committed to providing a child safe and child friendly environment, where students are safe and feel safe.

PROTECT

Protecting children & young people from abuse is our responsibility



Wooranna Park Primary School
Published by Amanda Ellaby · 16h · 🌐

Thank you to all of the Mums, Grandmas and Special People who attended our Mother's Day morning tea with our Prep students. We hope you enjoyed the opportunity to spend... See more



Wooranna Park Primary School
Published by Amanda Ellaby · 3 May at 08:00 · 🌐

In PE, students in Year 3/4 have been participating in a basketball unit. Student have been learning how to shoot using the BEEF acronym: Balance, Eyes, Elbow, Follow t... See more



Wooranna Park Primary School
Just now · 🌐

In 5/6B, lots of wonderful story ideas were created this week, as we have been staying warm by completing a writing assessment about 'An adventure to Uluru'!



Wooranna Park Primary School
Published by Amanda Ellaby · 4 May at 06:00 · 🌐

Help your child/ren start their day calmly and positively by ensuring that they get all the important instructions from 9am. We help them to be ready to learn by open... See more



UNIFORM REMINDERS

The wearing of school uniform is compulsory at Wooranna Park Primary School. For our full uniform, please see the school website. All our uniform pieces can be purchased at **PSW, Unit 1, 9-11 South Link, Dandenong South, 3157**



Orange Short Sleeve
Polo Shirts



Navy Blue
Windcheater



Navy Blue
Bomber Jacket



Summer Dress



Navy Blue tracksuit
pants/full length
leggings No Jeans



Navy Blue Rugby or
Gaberdine Shorts/Skort



Navy Blue Hat



Orange Long Sleeve
Polo Shirt



Socks –
White, Black, Navy



Sport Shoes or Black Shoes



Gloves and Scarves
(White, Black, Navy)

The following items are not permitted as a part of our uniform:

Jewellery



Long Earrings



Nail Polish



Make-Up



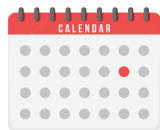
Please clearly label all clothing items including shoes.

IMPORTANT DETAILS

CURRICULUM DAYS

The following days have been endorsed by School Council:

- Friday 22 May
- Monday 24 August
- Monday 26 October



Students do not attend school on these days. DSSports will be providing childcare on these days.

On the last day of Terms One, Two and Three we have an early dismissal time of **2:30pm** and on the last day of Term Four we finish at **1:30pm**.

COMMUNICATION

Wooranna Park Primary School recognises the importance of the partnership between schools and families to support student learning, engagement and wellbeing.

Your child's teacher will offer you a range of opportunities to communicate with them including:

- ✓ XUNO
- ✓ School diary
- ✓ Formal meetings
- ✓ Before/After school chats

If you do not have access to XUNO please contact our school Office and find out how you can obtain it as XUNO will be used several times each week so we want everyone to have access.



FACEBOOK

Please like our [Facebook page](#). This page will be used by the school to inform families and the public of events and updates at the school. Feedback and discussion with parents/carers are welcome, but the school will not use Facebook for this purpose.

Please contact the school directly if you wish to discuss matters, as per our communication process. Only this [Facebook page](#) is endorsed by the Principal. Any other Facebook pages are not officially authorised representatives of the school.



CONTACT DETAILS

It is very important the school has your most current emergency contact telephone details, home and e-mail address.

If you change telephone details or home and e-mail address at any point, we ask that you update the school with your accurate contact details as soon as possible.

بسیار مهم است شماره تماس اضطراری
و آدرس دقیق خانه شما
را ما در مکتب داشته باشیم

اگر شما شماره تلفون یا آدرس خود را تغییر
میدهد لطفن هر چه
زودتر مکتب را اطلاع دهید



STUDENT SUPERVISION

Please note that our school grounds are supervised by school staff at the following times:

- Before school from 8:30am to 9am
- Throughout recess and lunch
- After school from 3:30pm to 3:45pm.

Our gates are locked each afternoon at 3:45pm. Students in the school grounds after this time will be cared for at [DSSports](#) at the family's expense.

The school grounds are not supervised outside of the above times.

It is important that families understand that the park, opposite the school, is not supervised by staff before or after school.

While some families use this area as a meeting place, please know children must be supervised by an adult, as per the Greater Dandenong Council's direction.



BREAKFAST CLUB



Breakfast is available for all students from 8:15am.

MORE IMPORTANT DETAILS

OUT OF HOURS SCHOOL CARE



DS Sports will be providing Outside School Hours Care at Wooranna Park Primary School from 3.30pm to 6pm, every afternoon, Monday to Friday.

DS Sports provides an adventurous and stimulating After School Care program, in a safe and inclusive environment.

DS zones are a place for growth and nurture the building of life-time skills. Our zones incorporate Health, Play, Leisure, Language, Real Life Connections and promotes the building of positive relationships with peers and our staff.

All families are strongly encouraged to register their child/ren for DS Sports as it is free to enrol and while you are under no obligation to use this service it does provide support for you in the event of an emergency. For information about this program, please contact this service directly at:

<https://www.dssports.org/wooranna-park-primary>

MOBILE DEVICES

In line with the Department of Education's [Mobile Phone policy](#), all phones brought to school must be switched off and stored securely in the front Office, during the school day.

A **mobile phone** is a telephone with access to a cellular (telecommunication) system, with or without a physical connection to a network. For the purpose of this policy, "mobile phone" refers to **mobile phones and any device** that may connect to or have a similar functionality to a mobile phone such as a smartwatch.

When a student is not complying with this mobile phone policy, we will be required to follow a process in accordance with our existing student engagement policies.



LUNCH ORDERS

Subway lunch orders are available each Friday. There is a pre-ordering system and orders must be placed via XUNO **by 4pm each Tuesday** for the Friday's lunch.

Late orders cannot be accepted.



Subway \$6

View

SAFETY

All bike and scooter riders are required to wear a bike helmet in Victoria.

Approved helmets have the Australian Standards Mark TM (AS/NZS 2063) and will be marked as suitable for cycling.

Children under the age of 12 may ride on footpaths, as can a supervising adult. They are required to give way to pedestrians and to wheel their bicycles over pedestrian and children's crossings.

Also, by law everyone must wear a seat belt when travelling in a car in Australia



BELL TIMES

08:50am	Classrooms open
09:00am	School begins
11:30am	Lunchtime (50mins)
12:20pm	Middle session
02:00pm	Recess (40mins)
02:40pm	Afternoon session
3:30pm	End of day



SAFETY EXPECTATIONS

Shared expectations of staff, parents, carers and students to support positive student behaviour are set out in the [Respectful, safe, engaged: shared expectations to support student behaviour statement](#).

- **Students** are also supported by school staff to meet expected standards of behaviour as outlined in our [Student Wellbeing and Engagement Policy](#), [Inclusion and Diversity Policy](#), [Bullying Prevention Policy](#)
- **Staff** must follow our school and department policies and the [Victorian Public Service Code of Conduct and Values](#). Teaching staff also adhere to the [Victorian Teaching Profession's Code of Conduct](#).
- **Parents and carers** play a vital role in helping their child understand and meet shared behaviour expectations. Additionally, information about the expectations of parents and carers to ensure schools remain respectful and inclusive places is outlined in the department's [Respectful Behaviours within the School Community Policy](#).

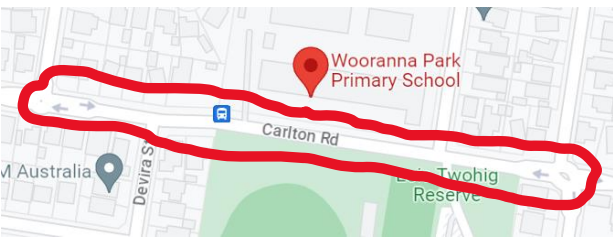
It is important that we model to our children Road Safety, by using the pedestrian crossing to cross the road and always follow the School Crossing Supervisors' directions.



As a driver you must **STOP** at the pedestrian crossings when someone is crossing the road. Please be advised that the pedestrian crossing on Apex Street is **no longer supervised**.



Please note, that while this is a convenient place to cross Carlton Road, it is not a supervised crossing and visibility is very difficult when cars are parked along both sides of the road.



Please use the roundabouts at each end of the school to safely turn around, rather than doing a U-turn in front of the school, particularly given there are a lot of young children around.



As the sign on the gate indicates, the **Staff Car Park** is for **Staff only**. The high volume of vehicles moving in and out increases the risk of accidents, especially since children may not be easily visible to drivers.



Please ensure that you travel at the **40kmph Speed Limit** around our school.

Helmets

Please make sure your child is safely fitted with a helmet before leaving home on either their bike or scooter. This illustrates that we are all working together to teach our children to stay safe and responsible whilst recognising that our young people need adult guidance and teaching on important routines such as helmets. More information of [bicycles and scooters safety](#) is available online.



The behaviour of staff, parents, carers and students has an impact on our school community and culture. We must acknowledge our shared responsibility to create a positive learning environment for the children and young people at our school

KISS & GO ZONE

We are a very lucky community with both Carlton Road and Wondalga Avenue available for parking before and after school.

It is important to understand that the parking directly outside of the school's main entry is a now **Kiss and Go Zone** before and after school. This means:

- **Do not leave your vehicle**

To assist with traffic flow, drivers should remain in the car whilst children get in and out.

- **Be timely**

If your child does not get in or out of the vehicle within 2 minutes you must leave and re-enter the Kiss & Go zone.

- **Child safety**

Please ensure children get in or out of the vehicle on the kerb side. The back seat is the safest seat for children to travel in. Ensure children have their restraints securely fastened before driving off.

- **Stay in sequence**

Drop off or pick up your child close to the top of the zone, as far forward as possible. This allows vehicles following you to enter the zone in an orderly manner.

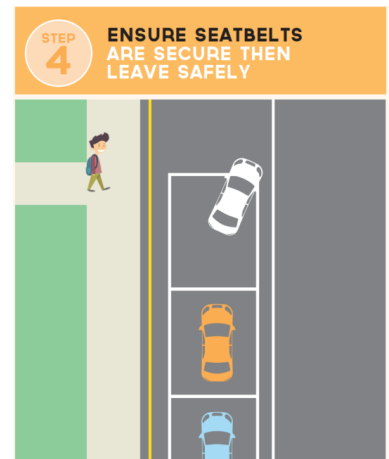
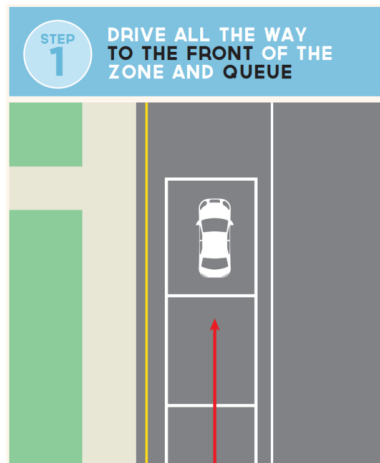
- **Driver duty of care**

Observe traffic when entering or leaving the zone. Use your indicator to advise when moving into or out of the zone.

- **No U-turns**

Do not do U-turn in busy school zones. They are dangerous and put children at risk

Please ensure that you travel at the **40kmph Speed Limit** around our school.





2026 CURRICULUM DAYS



22
MAY

ARCADE DAY (NO
SCREENS NEEDED)

24
AUG

LEGO MASTERS DAY

26
OCT

SPORT COACHING
INCURSION



WOORANNA PARK PRIMARY SCHOOL

PROTECT

Everyone has the right to be safe and be protected from abuse.

No one should behave in a way that makes you feel unsafe or afraid, including anyone in your family, anyone at school or anywhere else in the community.

Tell a teacher or any adult at your school if you feel unsafe.



It's everyone's responsibility.

Adults at school must listen and respond to concerns about child abuse.

If you suspect abuse of any child or young person, you have a responsibility to report it, even if you are not sure.

Further information & resources
www.education.vic.gov.au/protect

Term 2 2026



Keep this handy calendar on your fridge for upcoming events at school. Check XUNO, visit [our website](#), or follow our [Facebook page](#) as this calendar is subject to changes.

	Monday	Tuesday	Wednesday	Thursday	Friday	
April	20 Term Two begins See you from 8:50am, to be ready to learn at 9am!	21	22 Prep (2027) enrolment packs are available!	23 ANZAC commemoration @ 2:40pm	24 Gala Day (5/6s)	
	27 SPORTS	28 Have you enrolled your child/ren in after school care? You never know when you may need DS Sports!	29 Responsible Pet Ownership Incursion (3/4s)	30	01	
May	04	05 Japanese Children's Day	06 Dental Van onsite		08 Mother's Day morning tea @ 11am (Preps)	
	11 Have you presented your Health Care card to the office yet to qualify for CSEF ? You have until June 28 to access these funds.	12	13 Werribee Zoo Excursion (3/4s)	14	07 Mother's Day Stall Bring money and a shopping bag along to buy a special gift.	
	18	19 School Council @ 6pm	20	21 National Simultaneous Storytime District Cross Country (Selected students)	08 Mother's Day morning tea @ 11am (Preps)	
	25 2027 Prep Information Evening (5-6pm)	26	27	28	15 ES Personnel Day	
			28 Forest Edge Camp (5/6s)			15 School photos day
June	01	02 Have you Liked our school's official Facebook page ? We post information regularly!	03	04	05 Hot Chocolate today for \$1! Whole School Assembly @ 2:40pm	
	08 King's Birthday No School	09	10 The Arts Show from 2:40pm till 4:30pm	11	12 Toolbox incursion (5/6s)	
	15 Annual Reporting Meeting @ 2:40pm (All welcome)	16 School Council @ 6pm	17 2027 Prep Information Evening (5-6pm)	18	19 Dress up day , planned by JSC! Team Time @ 2:40pm	
	22	23	24 Student reports available on XUNO	25	26 Golden Assembly @ 12:20pm Last Day of Term 2:30pm finish	



We are proud to acknowledge the Bunurong People as the traditional owners and custodians of the land on which Wooranna Park Primary School is located. We pay our respects to Elders past, present and emerging.

XUNO

Download the **XUNO Family app** from Google Play or iOS app store to receive notifications to your phone of upcoming events, and notices!

9795 2007
www.woorannaparkps.vic.edu.au

