

Wooranna Park's Wonderings



Wednesday 27 May 2026

Hi everyone,



Thank you too for helping to ensure your children learn the importance of wearing the **correct school uniform** particularly during these colder days. A school uniform removes the sense of competition in dress, which can often cause stress amongst students and in addition, has the important safety factor of making Wooranna Park Primary children instantly recognisable.

If you require some assistance in accessing a uniform, please see us at the Office as we are more than happy to help you out so that your children have a strong sense of belonging to the Wooranna Park community.

Semester Reports

We will be providing student achievement reports for Semester One this year as usual. The reports will be available on XUNO on Wednesday 24 June.

The reports will continue to provide important details about student learning attainment, but full descriptive comments may not be included as a result of industrial action taken earlier this term by the Australian Education Union.

We will of course be pleased to discuss with you your child's progress at our next parent-teacher interviews scheduled for Tuesday 21 and Wednesday 22 July or, as always, you can contact your child's teacher to arrange a meeting.



In support of ensuring a safe learning environment for our students, I did want to remind everyone that our two gates are locked at **9am**. Therefore, if you find yourself still within the school grounds at this time then you will need to exit via the front office.

To big thank you to **Kate, Emma, Jill, Josephine, Laurel, Maddy, Michelle P, Michelle T, Molly, Sarah, Tanja and Ziorn** who will be spending the next three days away with our students this week.

We thank you for giving up your time to make this camp experience happen for our students!



THANK YOU!

It is very important the school has your most **current emergency contact** telephone details, email and home address. If you change telephone details, email or home address at any point, we ask that you update the school with your accurate contact details as soon as possible.



This is a reminder that schools do not provide **personal accident insurance or ambulance cover** for students. Parents and carers of students, who do not have student accident insurance/ambulance cover, are responsible for paying the cost of medical treatment for injured students, including the cost of ambulance attendance and any other transport costs.



School Council

School Polices

As valuable partners in promoting and maintaining child safety and wellbeing at Wooranna Park Primary School, we welcome and encourage your feedback. If you have any suggestions, comments or questions in relation to our child safe policies and practices, please contact us.

<https://www.woorannaparkps.vic.edu.au/page/13/Policies>

A poster for National Reconciliation Week 2026. The background is light blue with a repeating pattern of colorful, stylized Indigenous Australian patterns. The text "I'M IN" is repeated in various orientations and colors. The main text reads "NATIONAL RECONCILIATION WEEK 2026" and "27 MAY – 3 JUNE" at the top. Below that, "ALL IN" is written in large, bold, black letters. Underneath "ALL IN" is a black bar with the text "FOR RECONCILIATION" in white. At the bottom, there are logos for "#NRW2026", "RECONCILIATION.ORG.AU", "RECONCILIATION AUSTRALIA", and "25 YEARS OF RECONCILIATION AUSTRALIA".

Today marks the beginning of National Reconciliation Week!

This year's theme is All In—a powerful reminder that reconciliation isn't a spectator sport. It's a call for all of us to step up, take action, and make meaningful changes in our homes and communities every single day!

Reconciliation requires active truth-telling, deep listening, and a commitment to walking together with courage. Let's take this opportunity to learn more about our shared histories, celebrate First Nations cultures, and build a fairer, more united future for all Australians

Wooranna Park Primary School's



ART SHOW

10TH of June 2:40 pm to 4:30 pm!
T.O.C./Art Rooms



Art Show

On Wednesday 10 June we will be hosting an 'Under the Sea' themed Art Show in the TOC.

Families are welcome to join us from 2:40pm where students will be performing and then tour the artwork on display.

This will be a great celebration of the talent and creativity that exists within our community.

Success with Sleep!

As part of our ongoing commitment to student wellbeing and academic success, we would like to remind families of the importance of ensuring children get adequate sleep each night.

For children aged **5 to 12 years**, it is recommended that they get **9 to 11 hours of sleep** per night. To support this, we encourage families to aim for the following bedtimes:

•**5–8 year olds**: between **7:00 pm and 8:00 pm**

•**9–12 year olds**: between **8:00 pm and 9:00 pm**

A consistent bedtime routine helps children feel secure, improves concentration and behaviour at school, and supports their physical and emotional development.

We understand that every family has unique routines, but we kindly ask that you prioritise sleep as part of your child's daily schedule. If you need support establishing a bedtime routine, please do not hesitate to reach out to us.

On the following pages are some parenting tips on how to prepare children for sleep.

Sleep relaxation for children

Deep breathing for sleep relaxation



Deep breathing in and out can help your child relax. Bubble-blowing can help your child practise deep breathing.



At bedtime, get your child to relax their shoulders. Ask your child to **breathe in for 4 counts** (count, '1 rabbit, 2 rabbits, 3 rabbits, 4 rabbits'). Ask your child to hold the breath in for 4 counts.



Ask your child to **breathe out for 4 counts**. Ask your child to hold the breath out for 4 counts. Repeat up to 4 times. Tell your child that deep breathing gets easier with daily practice.

Using pictures for sleep relaxation

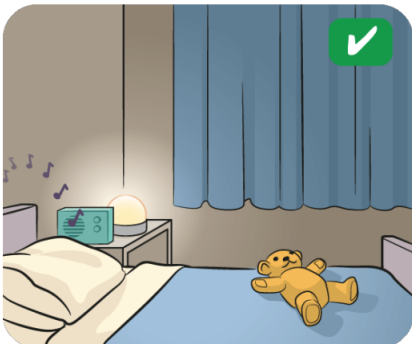


Choose a book with pictures of a place your child can imagine. Avoid scary pictures. Talk about the pictures. Ask your child if they can see a picture in their mind.



When your child sees pictures in their mind, it can help them relax. Your child can use their imagination to change the picture if they want to.

Sleep relaxation after a busy day



A quiet, dimly lit bedroom is good for sleep. Too much light can make it harder for your child to fall asleep. Your child can use a warm-coloured night-light.



Try to keep devices like computers, TVs and phones out of the bedroom. Playing games and watching TV takes up sleep time.



Try a worry box. Before bedtime, your child can draw or write down their worries. At bedtime, worries go into the box. Talk about worries the next day.



آرامش در خواب برای اطفال

تنفس عمیق برای آرامش خواب



از فرزندتان بخواهید که **نفس بیرون بکشد و تا چهار شمار کند**. از فرزندتان بخواهید نفس خود را نگهدارد و تا چهار شمار کند. تا چهار بار تکرار کنید. به فرزندتان بگویید که نفس عمیق کشیدن با تمرین روزانه راحت تر می شود.



هنگام خواب، طفل را وادار کنید تا شانه های خود را شل کند. از طفل خود بخواهید تا **چهار شمار کرده و به داخل عمیق نفس بکشد** (شمار کند، "یک خرگوش، دو خرگوش، سه خرگوش، چهار خرگوش") از فرزندتان بخواهید نفس خود را نگهدارد و تا چهار شمار کند.



نفس کشیدن عمیق به داخل و خارج می تواند به اطفال کمک کند تا آرام شوند. دمیدن در پوقانه می تواند به طفل شما در تمرین کردن تنفس عمیق کمک کند.

استفاده از تصاویر برای آرامش خواب



وقتی طفل شما تصاویری را در ذهن خود می بیند، این می تواند به او کمک کند که آرام شود. اگر فرزندتان بخواهد می تواند از تخیل خود برای تغییر تصویر استفاده کند.



کتابی را انتخاب کنید که حاوی تصاویر جایی باشد که فرزندتان می تواند تصور کند از تصاویر ترسناک اجتناب کنید. در مورد تصاویر صحبت کنید. از فرزندتان بپرسید آیا می تواند تصویری را در ذهن خود ببیند.

خواب آرام بعد از یک روز مصروف



جعبه نگرانی را به کار ببرید. قبل از خواب، طفل می تواند نگرانی های خود را ترسیم کند یا بنویسد. هنگام خواب، نگرانی ها داخل جعبه می روند. روز بعد در مورد نگرانی ها صحبت کنید.



سعی کنید وسایلی مانند کامپیوتر، تلویزیون و تلفون را از اتاق خواب دور نگه دارید. بازی کردن و تماشای تلویزیون زمان خواب را می گیرد.



یک اتاق خواب آرام با نور کم برای خواب مفید است. نور زیاد می تواند به خواب رفتن طفل را برایش سخت کند. طفل شما می تواند از چراغ شب با رنگ گرم استفاده کند.

Annual Reporting Meeting

This Monday 15 June we will be hosting our Annual Reporting Meeting to share our 2025 Annual Report. While this document is available on our website, I will be talking through this report from 2:40pm in the staff room.

Please come to the office where you will then be directed to the staffroom. We would love to see you then!

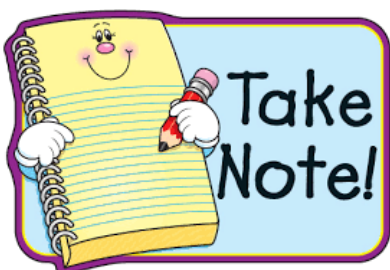


**A FRIENDLY
REMINDER!**

We are hosting an Annual Reporting Meeting
on Friday Monday 15 June @ 2:40m to
present the endorsed and attested
2025 Annual Report.

All welcome in the staffroom!

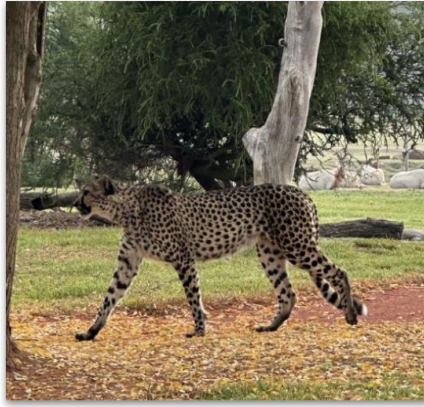
(03) 9795 2007
wooranna.park.ps@education.vic.gov.au



Amanda Ellaby
Executive Principal



3/4 Werribee Zoo Excursion



On Wednesday 13th May the 3/4 students visited Werribee Open Range Zoo for an exciting excursion. We were greeted by a foggy morning, which added to the atmosphere as we set off to explore. We explored the African Trail and Australian Trail, and were even able to see some dinosaurs up close. A highlight of the day was seeing the lions roaring nearby. Everyone was excited and engaged throughout the experience, enjoying the opportunity to learn about animals in their open-range habitats.



GRADES OF THE WEEK



Each week our classes earn points during their Specialists' class by:

- Respecting others' right to learn (respect)
- Caring for, looking after and using equipment for its correct purpose (safe)
- Worrying about ourselves and the things that affect us (responsible).

The class with the most points hosts Puggles for the week...and if a class wins Puggles three times then they will get a pizza party!

Congratulations to Prep B and 3/4C for being our grades of the week in the last week!

Wooranna Park Primary School's



ART SHOW

10TH of June 2:40 pm to 4:30 pm!
T.O.C./Art Rooms





Stories to discover.
Stories to tell.

Victorian Premiers' Reading Challenge 2026

Dear parent/carer,

The Victorian Premiers' Reading Challenge is now open, and we're excited to be taking part!

All children from birth to Year 10 are welcome to join in.

This year's Challenge theme is 'Stories to discover. Stories to tell'. Stories can inspire and challenge us and help us grow. They open our eyes to new worlds and new ways of thinking.

The number of books read can be varied for everyone's needs.

All children who complete the Challenge will receive a certificate of achievement signed by the Victorian Premier and former premiers.

To learn more about the Challenge, visit [Premiers' Reading Challenge | vic.gov.au](https://www.vic.gov.au/premiers-reading-challenge)

Students will receive their logins from their teacher while there is also a paper record sheet option. You can also contact Ms. Giselle, our Challenge Coordinator, with any questions.

Happy reading!

Ms. Giselle

FACEBOOK & WEBSITE

A few posts have been put up on our website over the past week. Please make sure you visit the home page and scroll down to catch up.

<https://www.woorannaparkps.vic.edu.au/>



Scholastic Book Club

The Scholastic Book Club flyer will be distributed this week with orders closing on **Tuesday 9 June**. Be sure to do your ordering online or return the order form to school so the books will then be delivered to the school and distributed to the classes for students to take home.

[READ MORE](#)



Art Show

We will be hosting and an 'Under the Sea' themed Art Show on **Wednesday 10 June** from 2:40pm till 3:30pm.

[READ MORE](#)



Parent Contributions

We will be accepting your contributions for 2026, ideally via XUNO (Events and Fees) from **21 January 2026** or alternatively the school will be open as of **27 January 2026** to receive parent contributions via EFTPOS.

[READ MORE](#)

Wooranna Park Primary School
Published by Amanda Ellaby · 21 May at 13:01 ·

WPPS have finished 8th in the District Cross Country, our best result in well over 10 years! 🏆 Congratulations also extends to the students who placed in the top ten! 🧡💙



Wooranna Park Primary School
Published by Amanda Ellaby · 17 May at 13:40 ·

Has your child/ren joined the Premier's Reading Challenge? There is still time and further details were in last week's newsletter. 🧡💙

Join the Premier's Reading Challenge!

The Education State

VICTORIA State Government



Wooranna Park Primary School
Published by Amanda Ellaby · 4 May at 06:00 ·

Help your child/ren start their day calmly and positively by ensuring that they get all the important instructions from 9am. We help them to be ready to learn by openi... See more

Learning starts at 9, so let's be on time!

JOIN US ON facebook

Wooranna Park Primary School
Published by Amanda Ellaby · 21 May at 08:00 ·

A playground pic! 🧡💙



FUTURE ENROLMENTS

If you have a child who will be starting Prep in 2027, please visit or call the Office to organise an interview with one of our leadership members.

This process helps us to get to know your little one in support of their transition to school.

If you know of a family who is wanting to join the Wooranna Park community in 2026, please encourage them to call the Office to organise a school tour.

Details about the 2027 Prep enrolment process can be found on our website at <https://www.woorannaparkps.vic.edu.au/page/12/Enrolment>

**Prep
enrolments
for 2027!**



Wooranna Park Primary School

**Carlton Road,
Dandenong North**

Meet our Principal at an
information evening on

Monday 25 May or
Wednesday 17 June

from 5pm till 6pm.



<https://www.woorannaparkps.vic.edu.au/>

Call for a school tour
9795 2007

UNIFORM REMINDERS

The wearing of school uniform is compulsory at Wooranna Park Primary School. For our full uniform, please see the school website. All our uniform pieces can be purchased at **PSW, Unit 1, 9-11 South Link, Dandenong South, 3157**



Orange Short Sleeve
Polo Shirts



Navy Blue
Windcheater



Navy Blue
Bomber Jacket



Summer Dress



Navy Blue tracksuit
pants/full length
leggings No Jeans



Navy Blue Rugby or
Gaberdine Shorts/Skort



Navy Blue Hat



Orange Long Sleeve
Polo Shirt



Socks –
White, Black, Navy



Sport Shoes or Black Shoes



Gloves and Scarves
(White, Black, Navy)

The following items are not permitted as a part of our uniform:

Jewellery



Long Earrings



Nail Polish



Make-Up



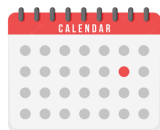
Please clearly label all clothing items including shoes.

IMPORTANT DETAILS

CURRICULUM DAYS

The following days have been endorsed by School Council:

- Friday 22 May
- Monday 24 August
- Monday 26 October



Students do not attend school on these days. DSSports will be providing childcare on these days.

On the last day of Terms One, Two and Three we have an early dismissal time of **2:30pm** and on the last day of Term Four we finish at **1:30pm**.

COMMUNICATION

Wooranna Park Primary School recognises the importance of the partnership between schools and families to support student learning, engagement and wellbeing.

Your child's teacher will offer you a range of opportunities to communicate with them including:

- ✓ XUNO
- ✓ School diary
- ✓ Formal meetings
- ✓ Before/After school chats

If you do not have access to XUNO please contact our school Office and find out how you can obtain it as XUNO will be used several times each week so we want everyone to have access.



FACEBOOK

Please like our [Facebook page](#). This page will be used by the school to inform families and the public of events and updates at the school. Feedback and discussion with parents/carers are welcome, but the school will not use Facebook for this purpose.

Please contact the school directly if you wish to discuss matters, as per our communication process. Only this [Facebook page](#) is endorsed by the Principal. Any other Facebook pages are not officially authorised representatives of the school.



CONTACT DETAILS

It is very important the school has your most current emergency contact telephone details, home and e-mail address.

If you change telephone details or home and e-mail address at any point, we ask that you update the school with your accurate contact details as soon as possible.

بسیار مهم است شماره تماس اضطراری
و آدرس دقیق خانه شما
را ما در مکتب داشته باشیم

اگر شما شماره تلفون یا آدرس خود را تغییر
میدهد لطفن هر چه
زودتر مکتب را اطلاع دهید



STUDENT SUPERVISION

Please note that our school grounds are supervised by school staff at the following times:

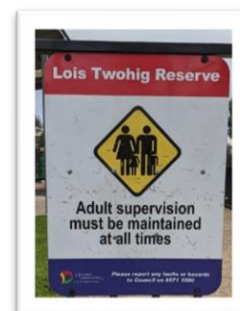
- Before school from 8:30am to 9am
- Throughout recess and lunch
- After school from 3:30pm to 3:45pm.

Our gates are locked each afternoon at 3:45pm. Students in the school grounds after this time will be cared for at [DSSports](#) at the family's expense.

The school grounds are not supervised outside of the above times.

It is important that families understand that the park, opposite the school, is not supervised by staff before or after school.

While some families use this area as a meeting place, please know children must be supervised by an adult, as per the Greater Dandenong Council's direction.



BREAKFAST CLUB



Breakfast is available for all students from 8:15am.

MORE IMPORTANT DETAILS

OUT OF HOURS SCHOOL CARE



DS Sports will be providing Outside School Hours Care at Wooranna Park Primary School from 3.30pm to 6pm, every afternoon, Monday to Friday.

DS Sports provides an adventurous and stimulating After School Care program, in a safe and inclusive environment.

DS zones are a place for growth and nurture the building of life-time skills. Our zones incorporate Health, Play, Leisure, Language, Real Life Connections and promotes the building of positive relationships with peers and our staff.

All families are strongly encouraged to register their child/ren for DS Sports as it is free to enrol and while you are under no obligation to use this service it does provide support for you in the event of an emergency. For information about this program, please contact this service directly at:

<https://www.dssports.org/wooranna-park-primary>

MOBILE DEVICES

In line with the Department of Education's [Mobile Phone policy](#), all phones brought to school must be switched off and stored securely in the front Office, during the school day.

A **mobile phone** is a telephone with access to a cellular (telecommunication) system, with or without a physical connection to a network. For the purpose of this policy, "mobile phone" refers to **mobile phones and any device** that may connect to or have a similar functionality to a mobile phone such as a smartwatch.

When a student is not complying with this mobile phone policy, we will be required to follow a process in accordance with our existing student engagement polices.



LUNCH ORDERS

Subway lunch orders are available each Friday. There is a pre-ordering system and orders must be placed via XUNO **by 4pm each Tuesday** for the Friday's lunch.

Late orders cannot be accepted.



Subway \$6

View

SAFETY

All bike and scooter riders are required to wear a bike helmet in Victoria.

Approved helmets have the Australian Standards Mark TM (AS/NZS 2063) and will be marked as suitable for cycling.

Children under the age of 12 may ride on footpaths, as can a supervising adult. They are required to give way to pedestrians and to wheel their bicycles over pedestrian and children's crossings.

Also, by law everyone must wear a seat belt when travelling in a car in Australia



BELL TIMES

08:50am	Classrooms open
09:00am	School begins
11:30am	Lunchtime (50mins)
12:20pm	Middle session
02:00pm	Recess (40mins)
02:40pm	Afternoon session
3:30pm	End of day



SAFETY EXPECTATIONS

Shared expectations of staff, parents, carers and students to support positive student behaviour are set out in the [Respectful, safe, engaged: shared expectations to support student behaviour statement](#).

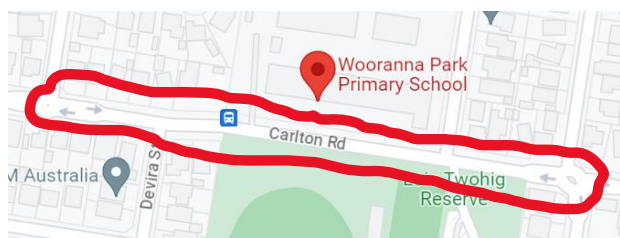
- **Students** are also supported by school staff to meet expected standards of behaviour as outlined in our [Student Wellbeing and Engagement Policy](#), [Inclusion and Diversity Policy](#), [Bullying Prevention Policy](#)
- **Staff** must follow our school and department policies and the [Victorian Public Service Code of Conduct and Values](#). Teaching staff also adhere to the [Victorian Teaching Profession's Code of Conduct](#).
- **Parents and carers** play a vital role in helping their child understand and meet shared behaviour expectations. Additionally, information about the expectations of parents and carers to ensure schools remain respectful and inclusive places is outlined in the department's [Respectful Behaviours within the School Community Policy](#).

It is important that we model to our children Road Safety, by using the pedestrian crossing to cross the road and always follow the School Crossing Supervisors' directions.

As a driver you must **STOP** at the pedestrian crossings when someone is crossing the road. Please be advised that the pedestrian crossing on Apex Street is **no longer supervised**.



Please note, that while this is a convenient place to cross Carlton Road, it is not a supervised crossing and visibility is very difficult when cars are parked along both sides of the road.



Please use the roundabouts at each end of the school to safely turn around, rather than doing a U-turn in front of the school, particularly given there are a lot of young children around.



As the sign on the gate indicates, the **Staff Car Park** is for **Staff only**. The high volume of vehicles moving in and out increases the risk of accidents, especially since children may not be easily visible to drivers.



Please ensure that you travel at the **40kmph Speed Limit** around our school.

Helmets

Please make sure your child is safely fitted with a helmet before leaving home on either their bike or scooter. This illustrates that we are all working together to teach our children to stay safe and responsible whilst recognising that our young people need adult guidance and teaching on important routines such as helmets. More information of [bicycles and scooters safety](#) is available online.



The behaviour of staff, parents, carers and students has an impact on our school community and culture. We must acknowledge our shared responsibility to create a positive learning environment for the children and young people at our school

KISS & GO ZONE

We are a very lucky community with both Carlton Road and Wondalga Avenue available for parking before and after school.

It is important to understand that the parking directly outside of the school's main entry is a now **Kiss and Go Zone** before and after school. This means:

- **Do not leave your vehicle**

To assist with traffic flow, drivers should remain in the car whilst children get in and out.

- **Be timely**

If your child does not get in or out of the vehicle within 2 minutes you must leave and re-enter the Kiss & Go zone.

- **Child safety**

Please ensure children get in or out of the vehicle on the kerb side. The back seat is the safest seat for children to travel in. Ensure children have their restraints securely fastened before driving off.

- **Stay in sequence**

Drop off or pick up your child close to the top of the zone, as far forward as possible. This allows vehicles following you to enter the zone in an orderly manner.

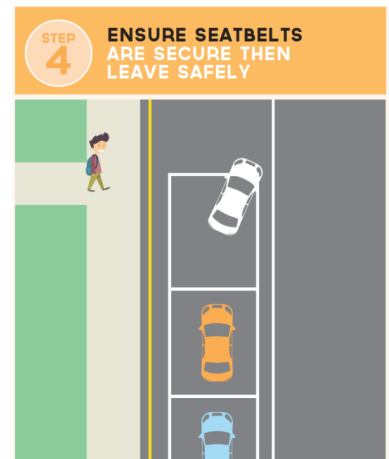
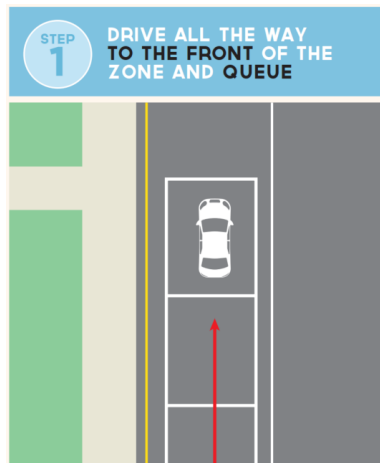
- **Driver duty of care**

Observe traffic when entering or leaving the zone. Use your indicator to advise when moving into or out of the zone.

- **No U-turns**

Do not do U-turn in busy school zones. They are dangerous and put children at risk

Please ensure that you travel at the **40kmph Speed Limit** around our school.





2026 CURRICULUM DAYS



24
AUG

LEGO MASTERS DAY



26
OCT

SPORT COACHING
INCURSION

WOORANNA PARK PRIMARY SCHOOL



Everyone has the right to be safe and protected from abuse

If someone is making you feel unsafe or afraid at school, home or anywhere else – tell an adult you trust at your school.

They will help you.

vic.gov.au/protect





**NOBLE PARK
SECONDARY COLLEGE**

— OUR BEST ALWAYS —

SCHOOL TOURS



RUNNING EVERY
WEDNESDAY
DURING JUNE



11:00_{AM} - 12:00_{PM}



**NO BOOKING
REQUIRED**



Term 2 2026



Keep this handy calendar on your fridge for upcoming events at school. Check XUNO, visit [our website](#), or follow our [Facebook page](#) as this calendar is subject to changes.

	Monday	Tuesday	Wednesday	Thursday	Friday
April	20 Term Two begins See you from 8:50am, to be ready to learn at 9am!	21	22 Prep (2027) enrolment packs are available!	23 ANZAC commemoration @ 2:40pm	24 Gala Day (5/6s)
	27 DS SPORTS	28 Have you enrolled your child/ren in after school care? You never know when you may need DS Sports!	29 Responsible Pet Ownership Incursion (3/4s)	30	01
May	04	05 Japanese Children's Day	06 Dental Van onsite		08 Mother's Day morning tea @ 11am (Preps)
	11	12 Have you presented your Health Care card to the office yet to qualify for CSEF ? You have until June 28 to access these funds.	13 Werribee Zoo Excursion (3/4s)	14	15 ES Personnel Day
	18	19 School Council @ 6pm	20	21 National Simultaneous Storytime District Cross Country (Selected students)	22 DS Sports will be open all day if you need childcare! Curriculum Day No students at school
	25 2027 Prep Information Evening (5-6pm)	26	27	28 Forest Edge Camp (5/6s)	29
June	01	02 Have you Liked our school's official Facebook page ? We post information regularly!	03	04	05 Hot Chocolate today for \$1! Whole School Assembly @ 2:40pm
	08 King's Birthday No School	09	10 The Arts Show from 2:40pm till 4:30pm	11	12 Toolbox incursion (5/6s)
	15 Annual Reporting Meeting @ 2:40pm (All welcome)	16 School Council @ 6pm	17 2027 Prep Information Evening (5-6pm)	18	19 Dress up day , planned by JSC! Team Time @ 2:40pm
	22	23	24 Student reports available on XUNO	25	26 Golden Assembly @ 12:20pm Last Day of Term 2:30pm finish



We are proud to acknowledge the Bunurong People as the traditional owners and custodians of the land on which Wooranna Park Primary School is located. We pay our respects to Elders past, present and emerging.

XUNO

Download the **XUNO Family app** from Google Play or iOS app store to receive notifications to your phone of upcoming events, and notices!

9795 2007

www.woorannaparkps.vic.edu.au

