

Wooranna Park's Wonderings



Wednesday 10 June 2026

Hi everyone,

Our teachers have been hard at work preparing **Semester One reports** for each student and their families. The below information provides you with an indication of the information you will find in your child's report this semester. Our reporting process is made up of two parts, which will be made available to you in the last week of this term. These parts include:

1. The Mid Year Report
2. Student Reflection Page
3. A Student Led Conference

1. Mid Year Reports

Our mid year reports will be uploaded on XUNO on **Wednesday 24 June**. Instructions on how to access this report is available at:

https://www.woorannaparkps.vic.edu.au/uploaded_files/media/how_to_view_and_download_your_reports_from_xuno.pdf

Of all the experiences and activities that a child is involved in at school, the student achievement report is the one thing that is consistently reread throughout one's life. Our aim is to try to make sure that this record of achievement is personal, honest, informative, constructive and hopeful so that when it is reread it evokes a sense of satisfaction, belonging and success.

Elements of the report

The reports will continue to provide important details about student learning attainment, but full descriptive comments is not be included because of industrial action taken earlier this term by the Australian Education Union.

In Semester One, your child will receive a rating for English, Mathematics, Personal Learning and Physical Education. They may also receive additional ratings for the Specialist subjects. Other areas of our curriculum including History, Digital Technologies, Science and Thinking, will be reported on at the end of the year.

Learning Areas		Rating	Level 3	Level 4	Level 5	Level 6	Level 7
English	Reading and Viewing	At Standard		○	●		
	Writing	At Standard		○	●		
	Speaking and Listening	Above Standard		○		●	
Mathematics	At Standard		○	●			
Personal and Social Capability	At Standard		○	●			
Physical Education	At Standard		○	●			
The Arts - Visual Arts	At Standard		○	●			
The Arts - Performing Arts	At Standard		○	●			
STEM	- Science	At Standard		○	●		
	- Design and Technology	At Standard		○	●		
LOTE - Japanese	At Standard		○	●			

This report includes a chart showing your child's current achievement against the expected standards for their year level, aligned with the Victorian Curriculum. The hollow dot represents your child's achievement from 12 months ago, allowing you to see their progress over time. Accompanying the chart is an indication of whether your child is currently performing *At Standard*, *Above Standard* or *Below Standard* for their year level.

If your child is from a Language Background other than English, they will be assessed against the English as an Additional Language (EAL) continuum, represented below. When they reach the final standard for all the stages of English, with proficiency across all modes of Reading, Writing, Speaking and Listening they will then be assessed against the Victorian Curriculum English standards.

		BL			B1			B2			B3		
		BL.1	BL.2	BL.3	B1.1	B1.2	B1.3	B2.1	B2.2	B2.3	B3.1	B3.2	B3.3
		Beg	Cons	Ach	Beg	Cons	Ach	Beg	Cons	Ach	Beg	Cons	Ach
English as an Additional Language	Reading and Viewing										○		●
	Writing									○		●	
	Speaking and Listening										○	●	

2. Student Reflection Page

Your child is also preparing a Student Reflection page, which they will bring home on **Wednesday 24 June**. This reflection provides an opportunity for students to share their learning, celebrate their achievements, and identify goals for continued growth. We encourage you to take some time to read and discuss this reflection with your child.

3. Student Led Conferences

Following the reports going home at the end of Term Two, on **Tuesday 21 July and Wednesday 22 July** we will hold Student Led Conferences. Student Led Conferences are a chance for you to meet with your child’s teacher, together with your child, to discuss their learning and how to support them in Semester Two. Details on how to book these conferences will be published on **Wednesday 24 June**.

Children’s Technology Access

Monitoring children's access to technology is crucial in safeguarding them from potential online risks such as exposure to inappropriate content, cyberbullying and online predators. Establishing clear guidelines and utilising monitoring tools can help parents/carers strike a balance between ensuring safety and respecting privacy.

Age restrictions are crucial on apps and should not be ignored. Letting a child under the minimum age use such apps is potentially dangerous. *Please do not let children lie about their age*, there are reasons why the age restrictions are set at a minimum age and that should be respected.

It is essential for parents/carers to be aware of these restrictions, which you can learn about at [Common Sense Media](#) and to communicate openly with your children about responsible online behaviour.

Top 5 online safety tips for kids

1

Set up your device to protect your information.

2

Explore safely and tell an adult if you see anything online that makes you feel yuck.

3

Limit who can contact you when you're playing games.

4

Stop all contact with anyone online who asks you to do anything you don't want to do. Report and block them.

5

Ask for help if anything online is bothering you.



Annual Reporting Meeting

On Monday 15 June we will be hosting our Annual Reporting Meeting to share our 2025 Annual Report. While this document is available on our website, I will be talking through this report from 2:40pm in the staffroom.

Please come to the Office where you will then be directed to the staffroom. We would love to see you then!



A FRIENDLY REMINDER!

We are hosting an Annual Reporting Meeting on Monday 15 June @ 2:40m to present the endorsed and attested 2025 Annual Report.

All welcome in the staffroom!

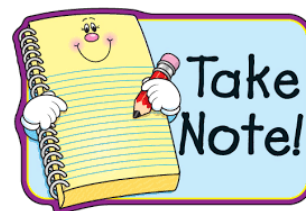
(03) 9795 2007
wooranna.park.ps@education.vic.gov.au

Friday 26 June is the last day of term so school will finish at **2:30pm**.

DS Sports will be open from 2:30pm till 6pm if you require childcare.

However, you will need to enrol them:

<https://www.dssports.org/wooranna-park-primary>



DS Sports will also be offering a holiday program if you are requiring childcare during the holidays on either some or all of the days. Again, enrol now before places fill:

<https://www.dssports.org/endeavour-hills-1>

Term Three will commence **Monday 13 July**.

Amanda Ellaby
Executive Principal

Wooranna Park Primary School Today!



ART SHOW

10TH of June 2:40 pm to 4:30 pm!
T.O.C./Art Rooms



SHARING OUR OF LEARNING

In 5/6 students...

Embraced new challenges during camp, developing teamwork, resilience and confidence while learning a range of new skills.



Explored fractions and 3D shapes through hands-on learning, using concrete materials to strengthen mathematical understanding.



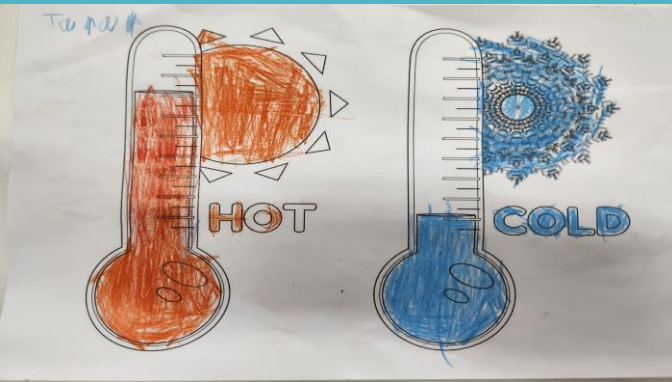
Investigated character, setting and connection to Country through *Us Mob Wallawurru*, writing informative texts about Uluru, completing character analyses and beginning personal responses.



STEM



Prep Students are learning about simple weather ideas and how we can measure ideas like hot and cold. Students examined thermometers and then showed their understanding of how they work by colouring their pictures in an appropriate colour to represent hot and cold.



Grade 1/2 students have been exploring weather concepts and how scientists measure, describe and record the weather. Students constructed simple wind measuring devices that let them see how strong the wind was blowing.

Grade 3/4 students have investigated the different parts of soil, described the difference between soil and dirt and recently conducted a scratch test of different rocks to help them determine the hardness of each rock. Students recorded their observations to help them practice gathering evidence.

Our 5/6 Students are learning about different aspects of our solar system and how these have an impact on how we experience day, night, seasons and even tides. Students showed their understanding of how the earth's axis influences the length of day and night throughout the year.



Junior School Council

Dress Up Day



Friday, 19th June



What do you
want to be when
you grow up?



GRADES OF THE WEEK



Each week our classes earn points during their Specialists' class by:

- Respecting others' right to learn (respect)
- Caring for, looking after and using equipment for its correct purpose (safe)
- Worrying about ourselves and the things that affect us (responsible).

The class with the most points hosts Puggles for the week...and if a class wins Puggles three times then they will get a pizza party!

**Congratulations to Prep A, 1/2B, 3/4B and 5/6C for
being our grades of the week in the fortnight!**



Stories to discover.
Stories to tell.

Victorian Premiers' Reading Challenge 2026

Dear parent/carer,

The Victorian Premiers' Reading Challenge is now open, and we're excited to be taking part!

All children from birth to Year 10 are welcome to join in.

This year's Challenge theme is 'Stories to discover. Stories to tell'. Stories can inspire and challenge us and help us grow. They open our eyes to new worlds and new ways of thinking.

The number of books read can be varied for everyone's needs.

All children who complete the Challenge will receive a certificate of achievement signed by the Victorian Premier and former premiers.

To learn more about the Challenge, visit [Premiers' Reading Challenge | vic.gov.au](https://www.vic.gov.au/premiers-reading-challenge)

Students will receive their logins from their teacher while there is also a paper record sheet option. You can also contact Ms. Giselle, our Challenge Coordinator, with any questions.

Happy reading!

Ms. Giselle

FACEBOOK & WEBSITE

A few posts have been put up on our website over the past week. Please make sure you visit the home page and scroll down to catch up.

<https://www.woorannaparkps.vic.edu.au/>



End of Term - Early Dismissal on Friday 26 June

Just a reminder that Friday 26 June is our last day of Term Two. Students will be dismissed at 2:30pm.



Art Show

We will be hosting and an 'Under the Sea' themed Art Show on **Wednesday 10 June** from 2:40pm till 3:30pm.

[READ MORE](#)

Wooranna Park Primary School
Published by Emma Doyle · 29 May at 09:56 · 🌐

Good morning from the Campers at Forest Edge. We are up and on to our last rounds of activities. We also slept really well for our second night on camp. We will update ... See more



Parent Contributions

We will be accepting your contributions for 2026. Ideally via XUNO (Events and Fees) from **21 January 2026** or alternatively the school will be open as of **27 January 2026** to receive parent contributions via EFTPOS.

[READ MORE](#)

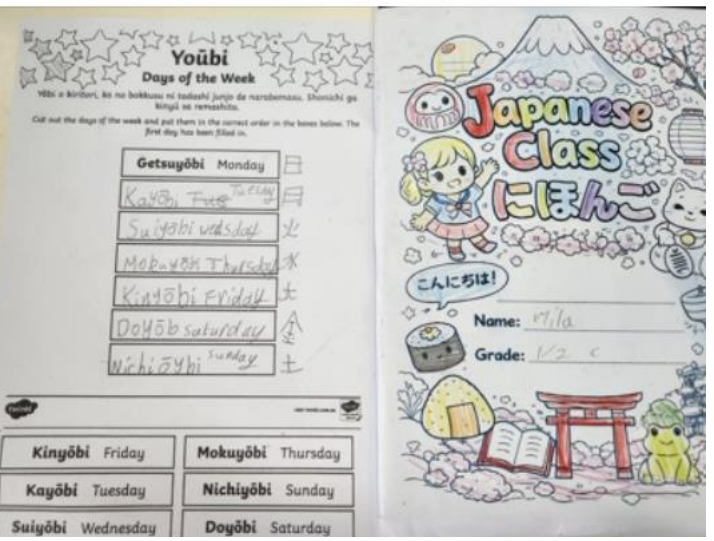
Wooranna Park Primary School
Published by Amanda Ellaby · 4 May at 06:00 · 🌐

Help your child/ren start their day calmly and positively by ensuring that they get all the important instructions from 9am. We help them to be ready to learn by open... See more



Wooranna Park Primary School
Published by Amanda Ellaby · 29 May at 09:00 · 🌐

Recently Grade 1/2 students have been learning to write the days of the week in Japanese. Students learned the names for the days as well as how to write them in Japanese Kanji.



Wooranna Park Primary School
Published by Amanda Ellaby · 28 May at 09:01 · 🌐

During Literature Studies, Prep students explored the text Fang Fang's Chinese New Year, learning about Chinese culture and New Year traditions. They also enjoyed using... See more



FUTURE ENROLMENTS

If you have a child who will be starting Prep in 2027, please visit or call the Office to organise an interview with one of our leadership members.

This process helps us to get to know your little one in support of their transition to school.

If you know of a family who is wanting to join the Wooranna Park community in 2026, please encourage them to call the Office to organise a school tour.

Details about the 2027 Prep enrolment process can be found on our website at <https://www.woorannaparkps.vic.edu.au/page/12/Enrolment>

Prep
enrolments
for 2027!



Wooranna Park Primary School

Carlton Road,
Dandenong North

Meet our Principal at an
information evening on

~~Monday 25 May~~ or
Wednesday 17 June

from 5pm till 6pm.



<https://www.woorannaparkps.vic.edu.au/>

Call for a school tour
9795 2007

UNIFORM REMINDERS

The wearing of school uniform is compulsory at Wooranna Park Primary School. For our full uniform, please see the school website. All our uniform pieces can be purchased at **PSW, Unit 1, 9-11 South Link, Dandenong South, 3157**



Orange Short Sleeve
Polo Shirts



Navy Blue
Windcheater



Navy Blue
Bomber Jacket



Summer Dress



Navy Blue tracksuit
pants/full length
leggings No Jeans



Navy Blue Rugby or
Gaberdine Shorts/Skort



Navy Blue Hat



Orange Long Sleeve
Polo Shirt



Socks –
White, Black, Navy



Sport Shoes or Black Shoes



Gloves and Scarves
(White, Black, Navy)

The following items are not permitted as a part of our uniform:

Jewellery



Long Earrings



Nail Polish



Make-Up



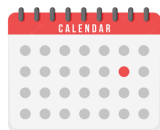
Please clearly label all clothing items including shoes.

IMPORTANT DETAILS

CURRICULUM DAYS

The following days have been endorsed by School Council:

- Friday 22 May
- Monday 24 August
- Monday 26 October



Students do not attend school on these days. DSSports will be providing childcare on these days.

On the last day of Terms One, Two and Three we have an early dismissal time of **2:30pm** and on the last day of Term Four we finish at **1:30pm**.

COMMUNICATION

Wooranna Park Primary School recognises the importance of the partnership between schools and families to support student learning, engagement and wellbeing.

Your child's teacher will offer you a range of opportunities to communicate with them including:

- ✓ XUNO
- ✓ School diary
- ✓ Formal meetings
- ✓ Before/After school chats

If you do not have access to XUNO please contact our school Office and find out how you can obtain it as XUNO will be used several times each week so we want everyone to have access.



FACEBOOK

Please like our [Facebook page](#). This page will be used by the school to inform families and the public of events and updates at the school. Feedback and discussion with parents/carers are welcome, but the school will not use Facebook for this purpose.

Please contact the school directly if you wish to discuss matters, as per our communication process. Only this [Facebook page](#) is endorsed by the Principal. Any other Facebook pages are not officially authorised representatives of the school.



CONTACT DETAILS

It is very important the school has your most current emergency contact telephone details, home and e-mail address.

If you change telephone details or home and e-mail address at any point, we ask that you update the school with your accurate contact details as soon as possible.

بسیار مهم است شماره تماس اضطراری
و آدرس دقیق خانه شما
را ما در مکتب داشته باشیم

اگر شما شماره تلفون یا آدرس خود را تغییر
میدهد لطفاً هر چه
زودتر مکتب را اطلاع دهید



STUDENT SUPERVISION

Please note that our school grounds are supervised by school staff at the following times:

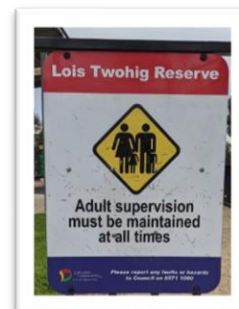
- Before school from 8:30am to 9am
- Throughout recess and lunch
- After school from 3:30pm to 3:45pm.

Our gates are locked each afternoon at 3:45pm. Students in the school grounds after this time will be cared for at [DSSports](#) at the family's expense.

The school grounds are not supervised outside of the above times.

It is important that families understand that the park, opposite the school, is not supervised by staff before or after school.

While some families use this area as a meeting place, please know children must be supervised by an adult, as per the Greater Dandenong Council's direction.



BREAKFAST CLUB



Breakfast is available for all students from 8:15am.

MORE IMPORTANT DETAILS

OUT OF HOURS SCHOOL CARE



DS Sports will be providing Outside School Hours Care at Wooranna Park Primary School from 3.30pm to 6pm, every afternoon, Monday to Friday.

DS Sports provides an adventurous and stimulating After School Care program, in a safe and inclusive environment.

DS zones are a place for growth and nurture the building of life-time skills. Our zones incorporate Health, Play, Leisure, Language, Real Life Connections and promotes the building of positive relationships with peers and our staff.

All families are strongly encouraged to register their child/ren for DS Sports as it is free to enrol and while you are under no obligation to use this service it does provide support for you in the event of an emergency. For information about this program, please contact this service directly at:

<https://www.dssports.org/wooranna-park-primary>

MOBILE DEVICES

In line with the Department of Education's [Mobile Phone policy](#), all phones brought to school must be switched off and stored securely in the front Office, during the school day.

A **mobile phone** is a telephone with access to a cellular (telecommunication) system, with or without a physical connection to a network. For the purpose of this policy, "mobile phone" refers to **mobile phones and any device** that may connect to or have a similar functionality to a mobile phone such as a smartwatch.

When a student is not complying with this mobile phone policy, we will be required to follow a process in accordance with our existing student engagement policies.



LUNCH ORDERS

Subway lunch orders are available each Friday. There is a pre-ordering system and orders must be placed via XUNO **by 4pm each Tuesday** for the Friday's lunch.

Late orders cannot be accepted.



Subway \$6

View

SAFETY

All bike and scooter riders are required to wear a bike helmet in Victoria.

Approved helmets have the Australian Standards Mark TM (AS/NZS 2063) and will be marked as suitable for cycling.

Children under the age of 12 may ride on footpaths, as can a supervising adult. They are required to give way to pedestrians and to wheel their bicycles over pedestrian and children's crossings.

Also, by law everyone must wear a seat belt when travelling in a car in Australia



BELL TIMES

08:50am	Classrooms open
09:00am	School begins
11:30am	Lunchtime (50mins)
12:20pm	Middle session
02:00pm	Recess (40mins)
02:40pm	Afternoon session
3:30pm	End of day



SAFETY EXPECTATIONS

Shared expectations of staff, parents, carers and students to support positive student behaviour are set out in the [Respectful, safe, engaged: shared expectations to support student behaviour statement](#).

- **Students** are also supported by school staff to meet expected standards of behaviour as outlined in our [Student Wellbeing and Engagement Policy](#), [Inclusion and Diversity Policy](#), [Bullying Prevention Policy](#)
- **Staff** must follow our school and department policies and the [Victorian Public Service Code of Conduct and Values](#). Teaching staff also adhere to the [Victorian Teaching Profession's Code of Conduct](#).
- **Parents and carers** play a vital role in helping their child understand and meet shared behaviour expectations. Additionally, information about the expectations of parents and carers to ensure schools remain respectful and inclusive places is outlined in the department's [Respectful Behaviours within the School Community Policy](#).

It is important that we model to our children Road Safety, by using the pedestrian crossing to cross the road and always follow the School Crossing Supervisors' directions.



As a driver you must **STOP** at the pedestrian crossings when someone is crossing the road. Please be advised that the pedestrian crossing on Apex Street is **no longer supervised**.



Please note, that while this is a convenient place to cross Carlton Road, it is not a supervised crossing and visibility is very difficult when cars are parked along both sides of the road.



Please use the roundabouts at each end of the school to safely turn around, rather than doing a U-turn in front of the school, particularly given there are a lot of young children around.



As the sign on the gate indicates, the **Staff Car Park** is for **Staff only**. The high volume of vehicles moving in and out increases the risk of accidents, especially since children may not be easily visible to drivers.



Please ensure that you travel at the **40kmph Speed Limit** around our school.

Helmets

Please make sure your child is safely fitted with a helmet before leaving home on either their bike or scooter. This illustrates that we are all working together to teach our children to stay safe and responsible whilst recognising that our young people need adult guidance and teaching on important routines such as helmets. More information of [bicycles and scooters safety](#) is available online.



The behaviour of staff, parents, carers and students has an impact on our school community and culture. We must acknowledge our shared responsibility to create a positive learning environment for the children and young people at our school

KISS & GO ZONE

We are a very lucky community with both Carlton Road and Wondalga Avenue available for parking before and after school.

It is important to understand that the parking directly outside of the school's main entry is a now **Kiss and Go Zone** before and after school. This means:

- **Do not leave your vehicle**

To assist with traffic flow, drivers should remain in the car whilst children get in and out.

- **Be timely**

If your child does not get in or out of the vehicle within 2 minutes you must leave and re-enter the Kiss & Go zone.

- **Child safety**

Please ensure children get in or out of the vehicle on the kerb side. The back seat is the safest seat for children to travel in. Ensure children have their restraints securely fastened before driving off.

- **Stay in sequence**

Drop off or pick up your child close to the top of the zone, as far forward as possible. This allows vehicles following you to enter the zone in an orderly manner.

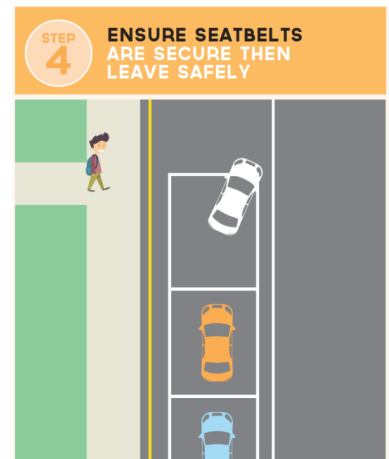
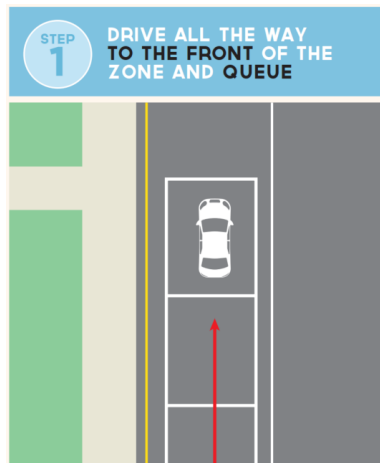
- **Driver duty of care**

Observe traffic when entering or leaving the zone. Use your indicator to advise when moving into or out of the zone.

- **No U-turns**

Do not do U-turn in busy school zones. They are dangerous and put children at risk

Please ensure that you travel at the **40kmph Speed Limit** around our school.





2026 CURRICULUM DAYS



24
AUG

LEGO MASTERS DAY



26
OCT

SPORT COACHING
INCURSION

WOORANNA PARK PRIMARY SCHOOL



Everyone has the right to be safe and protected from abuse

If someone is making you feel unsafe or afraid at school, home or anywhere else – tell an adult you trust at your school.

They will help you.

vic.gov.au/protect



LITTLE EXPLORERS NATURE PLAYGROUP

06 YEAR OLDS



We are a community run **nature based playgroup** for children between 0-6 years. We are passionate about nurturing our children's development through outdoor exploration and nature play and value doing life in community. All mothers and children (0-6 years) welcome!



EVERY WEDNESDAY
9:30 -11:30
DURING SCHOOL TERM
STARTING 22ND JULY

Tirhatuan Park,
Dandenong North

What to bring:

- Drink bottle
- Snack
- Comfortable outdoor clothes



Come and play with us!

Registration required

Contact Hannah Elms

04 5990 3878

Limited places available!



SCHOOL HOLIDAY PROGRAM



age 5-11

29-JUNE TO 10-JULY | 8AM-4:30PM

What We Offer:

- Multi-sports
- Inflatables
- Arts n' Crafts
- Nerf
- Face Painting
- Bumper Cars
- & MUCH MORE



\$10+ /day w/ CCs

BIRTHDAY PARTIES

NERF
\$338 FOR 10

DODGEM CARS
\$328 FOR 10

SPACE JUMP
\$268 FOR 10

BUBBLE SOCCER
\$338 FOR 10

MULTI-SPORTS
\$318 FOR 10

LASER TAG
\$378 FOR 10

party food incl.

PRIVATE FUNCTION \$510 FOR 2 HOURS

APPROVED BY DEPARTMENT OF EDUCATION

WWW.SPRINGVALEINDOORSPTS.COM.AU/SCHOOL-HOLIDAYS



Holiday camps on sale now!



MINECRAFT • Coding • Robotics
• Animation • Craft & more

Book now at codecamp.com.au/flyer

SAVE \$25

Use coupon code
FLYER25 at checkout

Supported by
W GROUP

Term 2 2026



Keep this handy calendar on your fridge for upcoming events at school. Check XUNO, visit [our website](#), or follow our [Facebook page](#) as this calendar is subject to changes.

	Monday	Tuesday	Wednesday	Thursday	Friday	
April	20 Term Two begins See you from 8:50am, to be ready to learn at 9am!	21	22 Prep (2027) enrolment packs are available!	23 ANZAC commemoration @ 2:40pm	24 Gala Day (5/6s)	
	27 SPORTS	28 Have you enrolled your child/ren in after school care? You never know when you may need DS Sports!	29 Responsible Pet Ownership Incursion (3/4s)	30	01	
May	04	05 Japanese Children's Day	06 Dental Van onsite		08 Mother's Day morning tea @ 11am (Preps)	
	11 Have you presented your Health Care card to the office yet to qualify for CSEF ? You have until June 28 to access these funds.	12	13 Werribee Zoo Excursion (3/4s)	14	07 Mother's Day Stall Bring money and a shopping bag along to buy a special gift.	
	18	19 School Council @ 6pm	20	21 National Simultaneous Storytime District Cross Country (Selected students)	08 Mother's Day morning tea @ 11am (Preps)	
	25 2027 Prep Information Evening (5-6pm)	26	27	28	15 ES Personnel Day School photos day	
			29 Forest Edge Camp (5/6s)			22 DS Sports will be open all day if you need childcare! Curriculum Day No students at school
June	01 Have you Liked our school's official Facebook page ? We post information regularly!	02	03	04	05 Hot Chocolate today for \$1! Whole School Assembly @ 2:40pm	
	08 King's Birthday No School	09	10 The Arts Show from 2:40pm till 4:30pm	11	12 Toolbox incursion (5/6s)	
	15 Annual Reporting Meeting @ 2:40pm (All welcome)	16 School Council @ 6pm	17 2027 Prep Information Evening (5-6pm)	18	19 Dress up day , planned by JSC! Team Time @ 2:40pm	
	22	23	24 Student reports available on XUNO	25	26 Golden Assembly @ 12:20pm Last Day of Term 2:30pm finish	



We are proud to acknowledge the Bunurong People as the traditional owners and custodians of the land on which Wooranna Park Primary School is located. We pay our respects to Elders past, present and emerging.

XUNO

Download the **XUNO Family app** from Google Play or iOS app store to receive notifications to your phone of upcoming events, and notices!

9795 2007

www.woorannaparkps.vic.edu.au

