

Wooranna Park's Wonderings



Wednesday 24 June 2026

Hi everyone,

Your child's **mid year report** will be uploaded on to XUNO today! Visit this link:
<https://woorannaparkps.xuno.com.au/index.php>.

The reports will continue to provide important details about student learning attainment, but full descriptive comments is not included because of industrial action taken earlier this term by the Australian Education Union.

This mid of year report card has:

- a chart with a rating, showing your child's current progress against the expected state-wide standard as well as the progress they have made since the previous year
- details about attendance

Further instructions on how to access this report are available at: https://www.woorannaparkps.vic.edu.au/uploaded_files/media/how_to_view_and_download_your_reports_from_xuno.pdf

Student Led Conferences

On **Tuesday 21 July and Wednesday 22 July** we will hold Student Led Conferences. Student Led Conferences are a chance for you to meet with your child's teacher, together with your child, to discuss their learning and how to support them in Semester Two. Details on how to book these conferences will be published on **Wednesday 24 July**.



We invite you to come along and meet with your child's teacher, with your child, to discuss their learning and how to support them in Semester Two.

This conference will provide an opportunity for you to:

- Hear about your child's successes in Semester One and their goals for the second half of the year
- Learn about how their teacher is supporting them
- Share your observations and ask any questions that you may have.

Each conference will be 10 minutes long.

This year you will book your interview time through XUNO. You will now be able to book your child/ren(s) interviews from the comfort of your own home either via the XUNO family app (on your phone) or the [XUNO portal](#).

Once you have made your booking you will be able to see the details under confirmed appointments. Instruction resources on how to do this are available at:

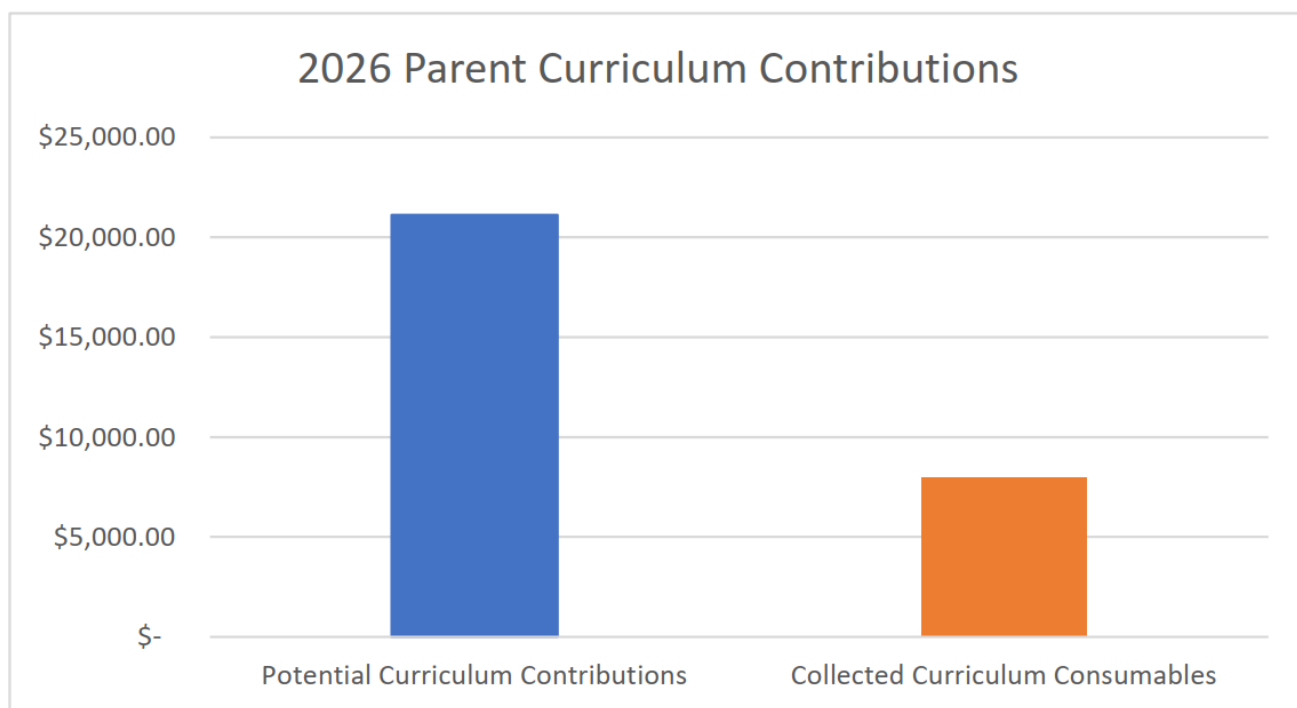
- [Booking an interview time via the family app](#)
- [Booking an interview time via the portal](#)

If you do not have access to XUNO you are more than welcome to contact your child's teacher or our Office directly on 9795 2007 and they will book you in personally through the system.

Financial Support

As you are probably aware, schools provide students with free instruction to develop the knowledge and skills for life-long learning, social development, active and informed citizenship, set out in the Victorian Curriculum. Your financial contributions in support of this are voluntary.

The ongoing financial support of our families ensures that our school can offer above and beyond what is set out in the mandated curriculum. Thank you to all families who have financially supported our school through voluntary contributions. As of 10 June, this year, we have collected 33% (compared to 50.24% in 2024) of curriculum contributions, which enables us to resource and purchase additional equipment to improve our learning programs.



The extra support from families has enabled us to offer special curriculum experiences; enhance digital learning opportunities; school buildings and grounds maintenance and enhancements; faster WIFI and internet.

We are still able to receive parent contributions through a variety of payment methods:

- **Eftpos** – available at the Office
- **BPAY** – Individual reference number on your family statement
- **Direct Deposit** – to the school's bank account.

Commonwealth Bank: BSB: 063249 ACC: 10045292



Learning starts
at 9, so let's be
on time!



Learning Starts at 9am

Thank you to everyone who is helping their child/ren to start their day calmly and positively by ensuring that they get all the important instructions from 9am. As a staff team, we help them to be ready to learn by opening our classroom doors from 8:50am.



School Uniform in Winter Months

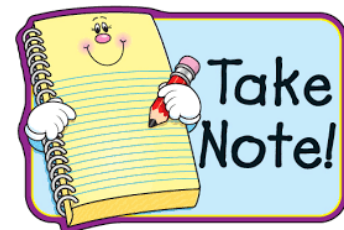
Thank you too for helping to ensure your children learn the importance of wearing the **correct school uniform** particularly during these colder days. A school uniform removes the sense of competition in dress, which can often cause stress amongst students and in addition, has the important safety factor of making Wooranna Park Primary children instantly recognisable.

If you require some assistance in accessing a uniform, please see us at the Office as we are more than happy to help you out so that your children have a strong sense of belonging to the Wooranna Park community.

Emergency Drills

The safety of your child and all children in our school, as well as the safety of the staff is very important to us. In order to maintain a safe environment for our children to learn and play, it is necessary that we practise our emergency and crisis response plans by having drills designed to exercise our procedures. For your information we will be conducting various drills throughout the remainder of the school year, including a lockdown drill which secures the school building and safely shelters all students, staff and visitors inside the building. On a different occasion we will also hold an evacuation drill where students will be safely escorted to one of our pre-determined evacuation sites. Following a drill, I will communicate to you that a drill has taken place at school so that you can talk about it with your child.

This Friday 26 June is the last day of term so school will finish at **2:30pm**. DS Sports will be open from 2:30pm till 6pm if you require childcare. However, you will need to enrol them at:
<https://www.dssports.org/wooranna-park-primary>



DS Sports will also be offering a holiday program if you are requiring childcare during the holidays on either some or all of the days. Again, enroll now before places fill at:
<https://www.dssports.org/endeavour-hills-1>

Term Three will commence **Monday 13July**.

Amanda Ellaby
Executive Principal

GRADES OF THE WEEK



Each week our classes earn points during their Specialists' class by:

- Respecting others' right to learn (respect)
- Caring for, looking after and using equipment for its correct purpose(safe)
- Worrying about ourselves and the things that affect us (responsible).

The class with the most points hosts Puggles for the week...and if a class wins Puggles three times then they will get a pizza party!

Congratulations to Prep A and 3/4C for being our grades of the week in the fortnight! Prep A and 5/6D have earnt themselves a Pizza Party for this term.



This term in Performing Arts, students have been busy preparing for their Arts Festival performances. They worked hard to learn their songs and practise any accompanying actions. Through this process, students also developed and extended their understanding of important musical elements, including dynamics (how loud or soft music is), tempo (how fast or slow the music is), and rhythm (the pattern of beats in music). Students should be proud of the effort and enthusiasm they brought to their preparations.





Stories to discover.
Stories to tell.

Victorian Premiers' Reading Challenge 2026

Dear parent/carer,

The Victorian Premiers' Reading Challenge is now open, and we're excited to be taking part!

All children from birth to Year 10 are welcome to join in.

This year's Challenge theme is 'Stories to discover. Stories to tell'. Stories can inspire and challenge us and help us grow. They open our eyes to new worlds and new ways of thinking.

The number of books read can be varied for everyone's needs.

All children who complete the Challenge will receive a certificate of achievement signed by the Victorian Premier and former premiers.

To learn more about the Challenge, visit [Premiers' Reading Challenge | vic.gov.au](https://www.vic.gov.au/premiers-reading-challenge)

Students will receive their logins from their teacher while there is also a paper record sheet option. You can also contact Ms. Giselle, our Challenge Coordinator, with any questions.

Happy reading!

Ms. Giselle

FACEBOOK & WEBSITE

A few posts have been put up on our website over the past week. Please make sure you visit the home page and scroll down to catch up.

<https://www.woorannaparkps.vic.edu.au/>



End of Term - Early Dismissal on Friday 26 June

Just a reminder that Friday 26 June is our last day of Term Two. Students will be dismissed at 2:30pm.

Wooranna Park Primary School
Published by Emma Doyle • 29 May at 09:56

Good morning from the Campers at Forest Edge. We are up and on to our last rounds of activities. We also slept really well for our second night on camp. We will update ... See more



Parent Contributions

We will be accepting your contributions for 2026, ideally via XUNO (Events and Fees) from **21 January 2026** or alternatively the school will be open as of **27 January 2026** to receive parent contributions via EFTPOS.

[READ MORE](#)

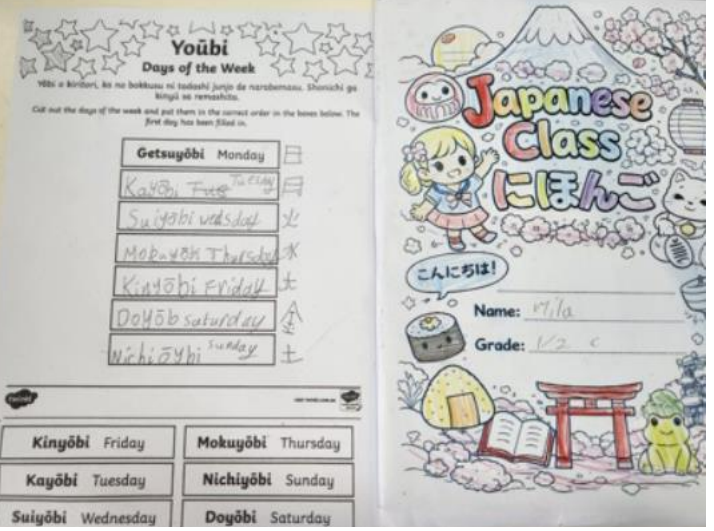
Wooranna Park Primary School
Published by Amanda Ellaby • 4 May at 06:00

Help your child/ren start their day calmly and positively by ensuring that they get all the important instructions from 9am. We help them to be ready to learn by open... See more



Wooranna Park Primary School
Published by Amanda Ellaby • 29 May at 09:00

Recently Grade 1/2 students have been learning to write the days of the week in Japanese. Students learned the names for the days as well as how to write them in Japanese Kanji.



Wooranna Park Primary School
Published by Amanda Ellaby • 28 May at 09:01

During Literature Studies, Prep students explored the text Fang Fang's Chinese New Year, learning about Chinese culture and New Year traditions. They also enjoyed using... See more



FUTURE ENROLMENTS

If you have a child who will be starting Prep in 2027, please visit or call the Office to organise an interview with one of our leadership members.

This process helps us to get to know your little one in support of their transition to school.

If you know of a family who is wanting to join the Wooranna Park community in 2026, please encourage them to call the Office to organise a school tour.

Details about the 2027 Prep enrolment process can be found on our website at <https://www.woorannaparkps.vic.edu.au/page/12/Enrolment>

Prep
enrolments
for 2027!



Wooranna Park Primary School

Carlton Road,
Dandenong North

Meet our Principal at an
information evening on

~~Monday 25 May~~ or
Wednesday 17 June

from 5pm till 6pm.



<https://www.woorannaparkps.vic.edu.au/>

Call for a school tour
9795 2007

FUTURE ENROLMENTS

If you have a child who will be starting Prep in 2027, please visit or call the Office to organise an interview with one of our leadership members.

This process helps us to get to know your little one in support of their transition to school.

If you know of a family who is wanting to join the Wooranna Park community in 2027, please encourage them to call the Office to organise a school tour.

Details about the 2027 Prep enrolment process can be found on our website at <https://www.woorannaparkps.vic.edu.au/page/12/Enrolment>



**2027 PREP
APPLICATIONS DUE
BY FRIDAY 31 JULY!**

VISIT OUR WEBSITE TO LEARN MORE ABOUT THE
DEPARTMENT OF EDUCATION'S STATEWIDE
TIMELINE:

[HTTPS://WWW.WOORANNAPARKPS.VIC.EDU.AU/
PAGE/12/ENROLMENT](https://www.woorannaparkps.vic.edu.au/page/12/enrolment)

UNIFORM REMINDERS

The wearing of school uniform is compulsory at Wooranna Park Primary School. For our full uniform, please see the school website. All our uniform pieces can be purchased at **PSW, Unit 1, 9-11 South Link, Dandenong South, 3157**



Orange Short Sleeve
Polo Shirts



Navy Blue
Windcheater



Navy Blue
Bomber Jacket



Summer Dress



Navy Blue tracksuit
pants/full length
leggings No Jeans



Navy Blue Rugby or
Gaberdine Shorts/Skort



Navy Blue Hat



Orange Long Sleeve
Polo Shirt



Socks –
White, Black, Navy



Sport Shoes or Black Shoes



Gloves and Scarves
(White, Black, Navy)

The following items are not permitted as a part of our uniform:

Jewellery



Long Earrings



Nail Polish



Make-Up



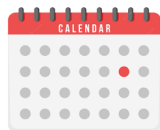
Please clearly label all clothing items including shoes.

IMPORTANT DETAILS

CURRICULUM DAYS

The following days have been endorsed by School Council:

- Friday 22 May
- Monday 24 August
- Monday 26 October



Students do not attend school on these days. DSSports will be providing childcare on these days.

On the last day of Terms One, Two and Three we have an early dismissal time of **2:30pm** and on the last day of Term Four we finish at **1:30pm**.

COMMUNICATION

Wooranna Park Primary School recognises the importance of the partnership between schools and families to support student learning, engagement and wellbeing.

Your child's teacher will offer you a range of opportunities to communicate with them including:

- ✓ XUNO
- ✓ School diary
- ✓ Formal meetings
- ✓ Before/After school chats

If you do not have access to XUNO please contact our school Office and find out how you can obtain it as XUNO will be used several times each week so we want everyone to have access.



FACEBOOK

Please like our [Facebook page](#). This page will be used by the school to inform families and the public of events and updates at the school. Feedback and discussion with parents/carers are welcome, but the school will not use Facebook for this purpose.

Please contact the school directly if you wish to discuss matters, as per our communication process. Only this [Facebook page](#) is endorsed by the Principal. Any other Facebook pages are not officially authorised representatives of the school.



CONTACT DETAILS

It is very important the school has your most current emergency contact telephone details, home and e-mail address.

If you change telephone details or home and e-mail address at any point, we ask that you update the school with your accurate contact details as soon as possible.

بسیار مهم است شماره تماس اضطراری
و آدرس دقیق خانه شما
را ما در مکتب داشته باشیم

اگر شما شماره تلفون یا آدرس خود را تغییر
میدهد لطفاً هر چه
زودتر مکتب را اطلاع دهید



STUDENT SUPERVISION

Please note that our school grounds are supervised by school staff at the following times:

- Before school from 8:30am to 9am
- Throughout recess and lunch
- After school from 3:30pm to 3:45pm.

Our gates are locked each afternoon at 3:45pm. Students in the school grounds after this time will be cared for at [DSSports](#) at the family's expense.

The school grounds are not supervised outside of the above times.

It is important that families understand that the park, opposite the school, is not supervised by staff before or after school.

While some families use this area as a meeting place, please know children must be supervised by an adult, as per the Greater Dandenong Council's direction.



BREAKFAST CLUB



Breakfast is available for all students from 8:15am.

MORE IMPORTANT DETAILS

OUT OF HOURS SCHOOL CARE



DS Sports will be providing Outside School Hours Care at Wooranna Park Primary School from 3.30pm to 6pm, every afternoon, Monday to Friday.

DS Sports provides an adventurous and stimulating After School Care program, in a safe and inclusive environment.

DS zones are a place for growth and nurture the building of life-time skills. Our zones incorporate Health, Play, Leisure, Language, Real Life Connections and promotes the building of positive relationships with peers and our staff.

All families are strongly encouraged to register their child/ren for DS Sports as it is free to enrol and while you are under no obligation to use this service it does provide support for you in the event of an emergency. For information about this program, please contact this service directly at:

<https://www.dssports.org/wooranna-park-primary>

MOBILE DEVICES

In line with the Department of Education's [Mobile Phone policy](#), all phones brought to school must be switched off and stored securely in the front Office, during the school day.

A **mobile phone** is a telephone with access to a cellular (telecommunication) system, with or without a physical connection to a network. For the purpose of this policy, "mobile phone" refers to **mobile phones and any device** that may connect to or have a similar functionality to a mobile phone such as a smartwatch.

When a student is not complying with this mobile phone policy, we will be required to follow a process in accordance with our existing student engagement polices.



LUNCH ORDERS

Subway lunch orders are available each Friday. There is a pre-ordering system and orders must be placed via XUNO **by 4pm each Tuesday** for the Friday's lunch.

Late orders cannot be accepted.



Subway \$6

View

SAFETY

All bike and scooter riders are required to wear a bike helmet in Victoria.

Approved helmets have the Australian Standards Mark TM (AS/NZS 2063) and will be marked as suitable for cycling.

Children under the age of 12 may ride on footpaths, as can a supervising adult. They are required to give way to pedestrians and to wheel their bicycles over pedestrian and children's crossings.

Also, by law everyone must wear a seat belt when travelling in a car in Australia



BELL TIMES

08:50am	Classrooms open
09:00am	School begins
11:30am	Lunchtime (50mins)
12:20pm	Middle session
02:00pm	Recess (40mins)
02:40pm	Afternoon session
3:30pm	End of day



SAFETY EXPECTATIONS

Shared expectations of staff, parents, carers and students to support positive student behaviour are set out in the [Respectful, safe, engaged: shared expectations to support student behaviour statement](#).

- **Students** are also supported by school staff to meet expected standards of behaviour as outlined in our [Student Wellbeing and Engagement Policy](#), [Inclusion and Diversity Policy](#), [Bullying Prevention Policy](#)
- **Staff** must follow our school and department policies and the [Victorian Public Service Code of Conduct and Values](#). Teaching staff also adhere to the [Victorian Teaching Profession's Code of Conduct](#).
- **Parents and carers** play a vital role in helping their child understand and meet shared behaviour expectations. Additionally, information about the expectations of parents and carers to ensure schools remain respectful and inclusive places is outlined in the department's [Respectful Behaviours within the School Community Policy](#).

It is important that we model to our children Road Safety, by using the pedestrian crossing to cross the road and always follow the School Crossing Supervisors' directions.



As a driver you must **STOP** at the pedestrian crossings when someone is crossing the road. Please be advised that the pedestrian crossing on Apex Street is **no longer supervised**.



Please note, that while this is a convenient place to cross Carlton Road, it is not a supervised crossing and visibility is very difficult when cars are parked along both sides of the road.



Please use the roundabouts at each end of the school to safely turn around, rather than doing a U-turn in front of the school, particularly given there are a lot of young children around.



As the sign on the gate indicates, the **Staff Car Park** is for **Staff only**. The high volume of vehicles moving in and out increases the risk of accidents, especially since children may not be easily visible to drivers.



Please ensure that you travel at the **40kmph Speed Limit** around our school.

Helmets

Please make sure your child is safely fitted with a helmet before leaving home on either their bike or scooter. This illustrates that we are all working together to teach our children to stay safe and responsible whilst recognising that our young people need adult guidance and teaching on important routines such as helmets. More information of [bicycles and scooters safety](#) is available online.



The behaviour of staff, parents, carers and students has an impact on our school community and culture. We must acknowledge our shared responsibility to create a positive learning environment for the children and young people at our school

KISS & GO ZONE

We are a very lucky community with both Carlton Road and Wondalga Avenue available for parking before and after school.

It is important to understand that the parking directly outside of the school's main entry is a now **Kiss and Go Zone** before and after school. This means:

- **Do not leave your vehicle**

To assist with traffic flow, drivers should remain in the car whilst children get in and out.

- **Be timely**

If your child does not get in or out of the vehicle within 2 minutes you must leave and re-enter the Kiss & Go zone.

- **Child safety**

Please ensure children get in or out of the vehicle on the kerb side. The back seat is the safest seat for children to travel in. Ensure children have their restraints securely fastened before driving off.

- **Stay in sequence**

Drop off or pick up your child close to the top of the zone, as far forward as possible. This allows vehicles following you to enter the zone in an orderly manner.

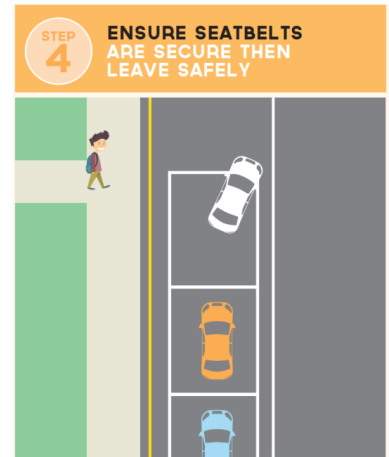
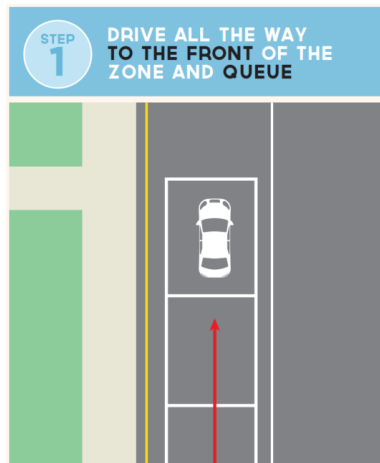
- **Driver duty of care**

Observe traffic when entering or leaving the zone. Use your indicator to advise when moving into or out of the zone.

- **No U-turns**

Do not do U-turn in busy school zones. They are dangerous and put children at risk

Please ensure that you travel at the **40kmph Speed Limit** around our school.





2026 CURRICULUM DAYS



24
AUG

LEGO MASTERS DAY



26
OCT

SPORT COACHING
INCURSION

WOORANNA PARK PRIMARY SCHOOL



Everyone has the right to be safe and protected from abuse

If someone is making you feel unsafe or afraid at school, home or anywhere else – tell an adult you trust at your school.

They will help you.

vic.gov.au/protect



2026 Junior Development Program

Get a head start over Winter, join the Softball Victoria Junior Development Program tailored to beginner to intermediate skilled players from 7 to 15 years of age, and develop fundamental skills and game sense leading into the 2026/2027 Summer season!

Venues across metro Melbourne and Regional Victoria, visit the website or scan the QR code for further details

Shaping Tomorrow's Softball Stars

✔ Learn from experienced coaches and state representative players

✔ Experience and develop the different elements of Softball including batting, fielding, pitching, catching and base running

✔ 2 hours each week over 6 weeks

✔ \$90 registration includes participant pack with T-shirt, cap & drink bottle



REGISTER HERE:
www.softballvic.org.au/events/363067



All participants who register with an affiliated Victorian softball club for the 2026/2027 season by 9 October 2026, will be eligible for a \$20 refund from Softball Victoria!

Holiday camps on sale now!



MINECRAFT • Coding • Robotics
• Animation • Craft & more

Book now at codecamp.com.au/flyer

SAVE \$25

Use coupon code
FLYER25 at checkout

Supported by
W GROUP

LITTLE EXPLORERS NATURE PLAYGROUP

06 YEAR OLDS



We are a community run **nature based playgroup** for children between 0-6 years. We are passionate about nurturing our children's development through outdoor exploration and nature play and value doing life in community. All mothers and children (0-6 years) welcome!



EVERY WEDNESDAY
9:30 -11:30
DURING SCHOOL TERM
STARTING 22ND JULY

Tirhatuan Park,
Dandenong North

What to bring:

- Drink bottle
- Snack
- Comfortable outdoor clothes



Come and play with us!

Registration required

Contact Hannah Elms

04 5990 3878

Limited places available!

Term 2 2026



Keep this handy calendar on your fridge for upcoming events at school. Check XUNO, visit [our website](#), or follow our [Facebook page](#) as this calendar is subject to changes.

	Monday	Tuesday	Wednesday	Thursday	Friday
April	20 Term Two begins See you from 8:50am, to be ready to learn at 9am!	21	22 Prep (2027) enrolment packs are available!	23 ANZAC commemoration @ 2:40pm	24 Gala Day (5/6s)
	27 SPORTS	28 Have you enrolled your child/ren in after school care? You never know when you may need DS Sports!	29 Responsible Pet Ownership Incursion (3/4s)	30	01
May	04	05 Japanese Children's Day	06	07 Mother's Day Stall Bring money and a shopping bag along to buy a special gift.	08 Mother's Day morning tea @ 11am (Preps)
	Dental Van onsite Assembly @ 2:40pm				
	11 Have you presented your Health Care card to the office yet to qualify for CSEF ? You have until June 28 to access these funds.	12	13 Werribee Zoo Excursion (3/4s)	14	15 ES Personnel Day
	18	19 School Council @ 6pm	20	21 National Simultaneous Storytime District Cross Country (Selected students)	22 DS Sports will be open all day if you need childcare! Curriculum Day No students at school
	25 2027 Prep Information Evening (5-6pm)	26	27	28	29
Forest Edge Camp (5/6s)					
01	02 Have you Liked our school's official Facebook page ? We post information regularly!	03	04	05 Hot Chocolate today for \$1! Whole School Assembly @ 2:40pm	
08 King's Birthday No School	09	10 The Arts Show from 2:40pm till 4:30pm	11	12 Toolbox incursion (5/6s)	
15 Annual Reporting Meeting @ 2:40pm (All welcome)	16 School Council @ 6pm	17 2027 Prep Information Evening (5-6pm)	18	19 Dress up day , planned by JSC! Team Time @ 2:40pm	
22	23	24 Student reports available on XUNO	25	26 Golden Assembly @ 12:20pm Last Day of Term 2:30pm finish	



We are proud to acknowledge the Bunurong People as the traditional owners and custodians of the land on which Wooranna Park Primary School is located. We pay our respects to Elders past, present and emerging.

XUNO

Download the **XUNO Family app** from Google Play or iOS app store to receive notifications to your phone of upcoming events, and notices!

9795 2007

www.woorannaparkps.vic.edu.au

