

Wooranna Park's Wonderings



Wednesday 17 December 2025

Hi everyone,

Firstly, I would like to acknowledge and thank everyone for the way you have respected our class creation process, especially once we released the grade structure and classes for 2026. I know that many of you appreciate that there are so many factors that need to be considered in this very complex process, and we recognise that any transition does create a level of anxiety for all parties. I would like to acknowledge **Rachael Rydqvist's** leadership of this process, particularly given the enormity of this task, in addition to her support in managing all the operations of our school community.

When looking back on the achievements of Wooranna Park during 2025 I am drawn to our students' attitudes towards school, along with their genuine engagement in learning. Their achievement growth is highlighted in each student's individual report, now available on XUNO. I would like to thank all the **teaching staff** on the thought, effort and process, they have shown their students throughout 2025, enabling these academic achievements alongside their social and emotional development. A big thank you also needs to be extended to our **Education Support Staff**, who have supported individual students and the various programs that offer such valuable learning experiences within our school.

This year we have worked even harder to develop consistent team approaches to learning and teaching, particularly in reading. Our Middle Leaders **Kim Campbell, Jess Marson, Laurel Heisman, Vicki Ross** and **Sapna Vats**, along with supportive leadership from **Emma Doyle** and **Megan Van Der Velden** enabling our students' achievement and engagement.

We know we cannot get the best out of our students, in terms of their learning, unless we are also helping them with their health and wellbeing. This often includes family needs as well and the demands placed on schools to 'solve' society's problems. An enormous effort; emotionally and strategically is devoted by staff to this area and as a community we would be lost without them! Many thanks to **Becki Kinsella** for the genuine care and concern you have shown all members of our school community. We have also been appreciative of the support offered by our School Chaplain, **Georgia Clarke** and our Occupational Therapist, **Courtney Graf**.

As you can see there are many, many people involved in trying to provide our students with the best learning environment possible. Two groups in particular who provide excellent support to me are members of School Council, led by **Rob Trotter** and our wonderful support staff, led by Business Manager **Sue Bitzios**. A big thank you to **Allison Esmonde, Lyn Mitsios** and **Ness Moodie** for being available and present for all our community members.

I would like to acknowledge the valuable contribution of quite a few staff who are leaving us. They have worked hard while at Wooranna Park and have helped to build a safe, caring and productive work environment for students, staff and families to enjoy.

Firstly, I extend my best wishes to **Brian** who is retiring from teaching. Brian's dedication to promoting health, teamwork, and fun through physical education has enriched the experiences of all our students. I would also like to acknowledge his early-morning commitment to our Breakfast Club. His reliable presence, warm welcome, and genuine care have helped create a positive start to the day for so many of our students. This quiet but powerful contribution reflects Brian's strong sense of community and his willingness to go above and beyond.

I would also like to take this opportunity to farewell **Georgia**, who has built meaningful connections with our students. We wish you all the very best!

Thanks, is also extended to **Liz** who finishes her year with us. In her time at our school, she has made a wonderful contribution to our senior students, guiding them through an important and memorable year with care, and professionalism.

We are also bidding farewell to **Barb Cinar** who will be permanently transferring to her regional school.

I thank all these staff for the contributions that they have made to our school's culture and community. We hope you each take with you fond memories of your time at Wooranna Park!

I would like to acknowledge the contribution of our school leaders, **Hamed and Sahel, Alissa and Christopher, Fayaz and Gabriel, Abigail and Sorosh** along with **Ayaan, Isaac, Hamed and Layla** that they have made to Wooranna Park. We have appreciated your leadership and role modelling!

Our acknowledgement also needs to be extended to the following Grade Six students who were recognised for their individual efforts at their graduation. Congratulations to these recipients!

Community Spirit and Leadership Award	Principal Award	Terry O'Connor Awards
Isaac Trotter	Ayaan Jabber	Layla Abdullahi Gabriel Popescu



And to **all our students**, well done on how you have gone about taking responsibility for your own learning throughout 2025 and for demonstrating our school values of being safe, respectful and responsible when learning and playing together.

Please stay safe as you enjoy a well deserved break!

The last day of Term Four is **Friday 19 December**. Students will be dismissed at the earlier time of **1:30pm**.

Child Safe Standards

The [Child Safe Standards](#) to strengthen child safety across organisations, including schools. These standards recognise the critical importance of families and the broader school community in maintaining and promoting child safety and wellbeing.



Throughout the year Wooranna Park Primary School reviews and updates its Child Safety Policies and Procedures, to ensure they meet the requirements of the new standards, as well as other whole school policies. These are always available to view on the [school's website](#) and at the Office.

We are committed to continuous improvement in our approach to child safety and wellbeing and welcome feedback from families and members of our school community on ways we can further strengthen our Child Safety Policies procedures and practices.

If you have any suggestions, comments or questions, please contact me via the school email: wooranna.park.ps@education.vic.gov.au

I would like acknowledge the valuable role of our School Council, under the leadership of **Rob Trotter**, in developing such school policies, particularly supporting my staff and I to understand and consider the views of the school community, where appropriate. There are a small number of policies that must be developed and approved by the School Council because of legal requirements or Department Policy (e.g. Uniform and Student Dress Code, Child Safe Standards, Finance policies etc) and I thank this group of parents and staff for committing to this work in 2025! All these policies are on [our website](#) for your review.

Finally, as we prepare to celebrate Christmas, I wish you all a peaceful, joyful and restful holiday season.

May you find time to relax, recharge and reconnect with your loved ones. Take this time to also reflect on the blessings and opportunities that we have in our lives and look forward to the new year with hope and optimism.

Thank you for being part of our WPPS community!

Merry Christmas and Happy New Year!

Amanda Ellaby
Executive Principal



2026 LEARNING COMMUNITY

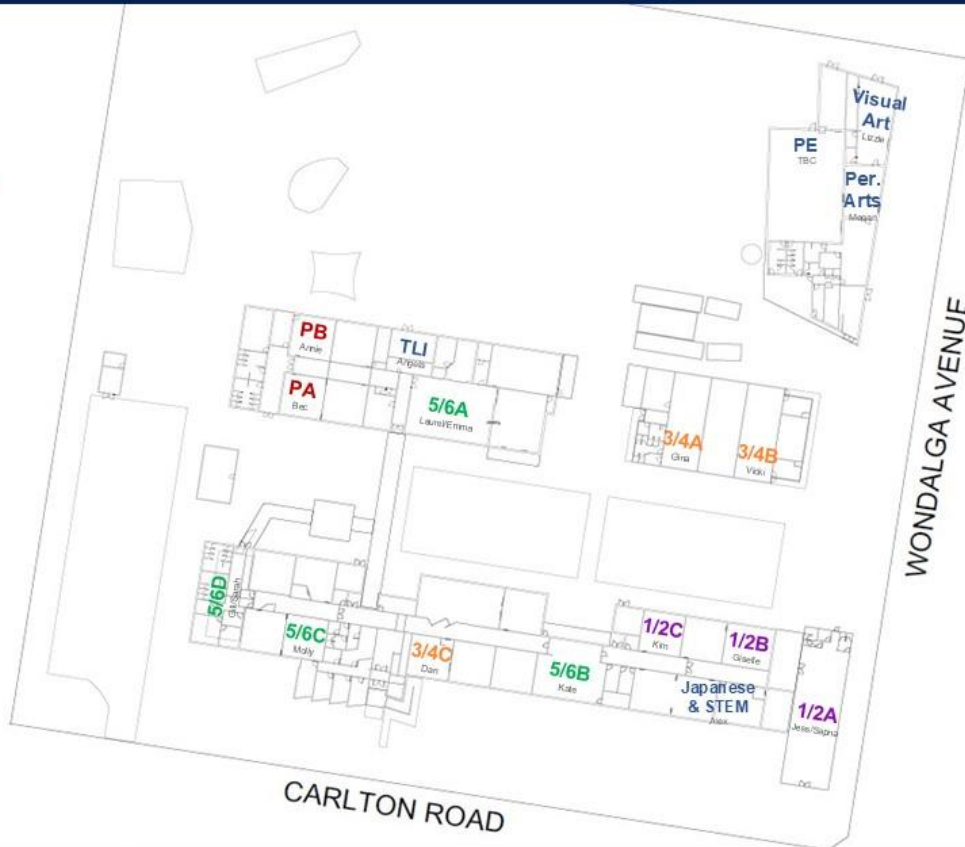
Teachers	
Prep	Bec Kofler
	Annie Praveen
	Kim Campbell
1/2	Jess Marson / Sapna Vats
	Giselle Karaan
	Vicki Ross
3/4	Dan Alexander
	Gina Vongue
	Laurel Heisman / Emma Doyle
5/6	Kate O'Donnell
	Molly Howard
	Gill Thomson-Cook / Sarah Crawford

Leadership	
Becki Kinsella	Inclusion Leader
Megan van der Velden	Learning Specialist
Emma Doyle	Leading Teacher
Sue Bitzios	Business Manager
Rachael Rydqvist	Assistant Principal
Amanda Ellaby	Principal

Specialists	
Alexander Twieg	Japanese / STEM
TBC	Physical Education
Lizzie Moroney	Visual Arts
Megan van der Velden	Performing Arts

Acceleration	
Angela Borstelj	Tutoring
Megan van der Velden	Leadership release (Fri, for Term Only only)

Education Support	
Classroom	Administration
Alice Avraam	Lyn Mitsios
Andjela Prostran	Allison Esmonde
Hayley Alman	Ness Moodie
Helen Overmars	
Katelyn Amos	
Michelle Price	
Nicole Zerella	
Priya Potluri	
Nayyab Hamza	
Rita Estrada	
Sahar Fatima	
Suraya Yawari	
Tanja Supljeglav	
Victor Jeffrey	
	Occupational Therapist
	Courtney Graf (F)



Class Locations 2026



BACK TO SCHOOL

WEDNESDAY 28 JANAUARY
YEARS 1 TO 6

THURSDAY 29 JANAUARY
PREPS TILL 12:30PM



See you from

8:50am!

www.woorannaparkps.vic.edu.au



Back to School

To help your child/ren be ready for their **first day of school in 2026** please make sure you have:

- Prepared and named your child's **school uniform**, including a SunSmart hat. The wearing of school uniform is compulsory at Wooranna Park Primary School.

All our uniform pieces can be purchased at PSW, Unit 1, 9-11 South Link, Dandenong South, 3157. There is also an [online store](#).

- Paid your 2026 **Parent Contributions** electronically from 21 January or at school from 27 January 2026.

Please refer to the [Parent Contributions arrangements for 2026](#), either on the following pages or via our website, which includes a one page overview of the Department of Education's Parent Payment Policy for further details.

- Ensured they have a named lunch box and drink bottle.

- Noted that school starts for our grade one to six students return to school on **Wednesday 28 January from 8:50am till 3:30pm**. Our preps start on **Thursday 29 January** from 8:50am till 12:30pm.

- Booked your **after school care** place with DS Sports at: <https://www.dssports.org/wooranna-park-primary>

*I do suggest that **all** parents/carers register their child/ren for DS Sports, as while you are under no obligation to use the service, it could be a support for you in the event of an emergency.*

**See you on
Wednesday 28
January!**



STUDENT FREE DAYS IN 2026

To help you with your 2026 planning, please note the dates listed below are our student free days!

DS Sports will be open all day for care for the March, May, August and October dates, in the TOC. Please ensure you enrol at: <https://www.dssports.org/wooranna-park-primary>

All families are **strongly encouraged** to register their child/ren for DS Sports as it is free to enrol and while you are under no obligation to use this service it does provide support for you in the event of an emergency.



2026 Student Free Days

Tuesday 27 January

Tuesday 10 March

Friday 22 May

Monday 24 August

Monday 26 October

Two orange pencils are positioned at the bottom left of the page. One pencil is standing upright, and the other is lying horizontally in front of it.

Students do not attend on these days.

VOLUNTARY FINANCIAL CONTRIBUTIONS



November 2025

Dear Parents/Carers,

Wooranna Park Primary School is looking forward to another wonderful year of learning and teaching in 2026. We are writing to share our Voluntary Financial Contributions Schedule for the upcoming school year.

As always, we remain committed to providing free instruction to all students to meet the standard curriculum requirements set by the Department of Education. We would like to emphasise that all contributions are strictly voluntary.

Your ongoing support—whether through voluntary contributions, fundraising or the generous donation of your time—makes a significant difference to the opportunities we can offer our students. Thanks to your contributions, we have been able to:

- Enhance the learning experience with special curriculum programs
- Provide additional learning resources
- Maintain and improve our school buildings and grounds

In 2026, all classroom supplies will be provided in bulk and delivered directly to classrooms. Teachers will distribute stationery and other materials to students as needed throughout the year.

For more details about the Department's Parent Payments Policy, please see the one-page overview attached.

We truly appreciate your continued support. Together, we can ensure that Wooranna Park Primary School remains a vibrant, engaging and supportive place for all learners.

Please find attached our 2026 Voluntary Financial Contributions Schedule outlining the breakdown for each area. Online payments can be made via XUNO from **21 January 2026** or alternatively the school will be open as of **27 January 2026** to receive parent contributions.

Amanda Ellaby
Executive Principal

Rob Trotter
School Council President



2026 VOLUNTARY FINANCIAL CONTRIBUTIONS SCHEDULE

ITEM	Annual Amount per STUDENT
CURRICULUM CONTRIBUTIONS <ul style="list-style-type: none"> • Classroom consumables, materials and equipment • 2026 Wooranna Park Student Diary • Printing and photocopying of learning materials • Digital Learning: <ul style="list-style-type: none"> ○ Essential Assessment – Literacy & Numeracy ○ Sunshine Online ○ Times Table Rock Stars 	\$80
OTHER CONTRIBUTIONS <ul style="list-style-type: none"> • ICT Devices • School grounds maintenance & improvements 	\$35 \$25
TAX DEDUCTIBLE CONTRIBUTIONS (per family) <ul style="list-style-type: none"> • Building Fund (Suggested amount \$25.00) 	(Parent/Carer to complete) \$_____
EXTRA-CURRICULAR ITEMS AND ACTIVITIES <ul style="list-style-type: none"> • Grade 5/6 Interschool Sports Program (CSEF/SSB can be allocated, if eligible) 	(Parent/Carer to complete) \$50

FAMILY SURNAME: _____ **FAMILY ID:** _____ (Office use only)

Student(s) first name(s): _____

STUDENT SURNAME(S) (if different): _____

ITEM	Item Amount	Number of students in your family	Annual Amount per FAMILY
Curriculum Contributions			\$
Other Contributions			\$
Tax Deductible Contributions (Parent/Carer to complete)			\$
Extra-Curricular Items and Activities			\$
CSEF/SSB - YES / NO (Parent/Carer to complete)			
TOTAL FAMILY CONTRIBUTION			\$
(XUNO - EFT) (Parent/Carer to complete)			



Curriculum Contributions

Items and activities that students use, or participate in, to access the curriculum include:

- Everyday items that your child/ren will use in the classroom for the essential curriculum such as art supplies, science equipment, cooking ingredients and technology materials.
- Computer applications where our students have their own individual password.

Other Contributions

Non-curriculum items and activities to support the daily operation and objectives of Wooranna Park Primary School.

Tax Deductible Contributions

Building Fund tax deductible contributions to Wooranna Park Primary School support renovations, upgrades and maintenance of school infrastructure.

Extra-Curricular (OPTIONAL) Items and Activities

Wooranna Park Primary School offers a range of items and activities that enhance or broaden the schooling experience of students beyond what the school provides to deliver the curriculum. These are provided on a user-pays basis. Details of these items and activities will be provided to students and families throughout the year, such as camps, incursions and excursions.

Educational Items for Students to own

All classroom supplies will be provided directly to the classrooms in bulk, where teachers will distribute stationery and other supplies to the students as needed.

Financial Support for Families

Wooranna Park Primary School understands that some families may experience financial difficulty and offers a range of support options, including:

- State Schools' Relief provides support such as new school uniforms, shoes and more for disadvantaged families. Applications are submitted by the school.
- Camps, Sports and Excursions Fund (CSEF) provides payments for eligible families to assist students to attend camps, sporting events and excursions. Application forms will be available at the office as of **27 January 2026** for new families or newly eligible families with a current Health Care Card. Parents/carers who currently receive CSEF, and who remain eligible, will automatically have their 2026 application processed by the school. For all applications, we will require a copy of your current Health Care Card.

For a confidential discussion about accessing these services, or if you would like to discuss alternative payment arrangements, please contact our Business Manager, Sue Bitzios on 9795 2007 or sue.bitzios@education.vic.gov.au. Any information about your financial circumstances, payment arrangements or status will be kept strictly confidential.

Payment Methods

We will be accepting online payments via **XUNO** (Events and Fees) from **21 January 2026**.

Alternatively, Wooranna Park Primary School will be open as of **27 January 2026** to receive parent contributions at the office via **EFTPOS**.

Refunds

Parent/carer requests for refunds are subject to the discretion of the school and made on a case-by-case basis. Refunds will be provided where the school deems it is reasonable and fair to do so, taking into consideration whether a cost has been incurred, the Department's Parent Payment Policy and Guidance, Financial Help for Families Policy and any other relevant information.

**PARENT PAYMENTS POLICY
ONE PAGE OVERVIEW**



FREE INSTRUCTION

- Schools provide students with free instruction and ensure students have free access to all items, activities and services that are used by the school to fulfil the standard curriculum requirements in Victorian Curriculum F-10, VCE and VCAL.
- Schools may invite parents to make a financial contribution to support the school.



PARENT PAYMENT REQUESTS

Schools can request contributions from parents under three categories:

Curriculum Contributions

Voluntary financial contributions for curriculum items and activities which the school deems necessary for students to learn the Curriculum.

Other Contributions

Voluntary financial contributions for non-curriculum items and activities that relate to the school's functions and objectives.

Extra-Curricular Items and Activities

Items and activities that enhance or broaden the schooling experience of students and are above and beyond what the school provides for free to deliver the Curriculum. These are provided on a user-pays basis.

- Schools may also invite parents to supply or purchase educational items to use and own (e.g. textbooks, stationery, digital devices).



FINANCIAL HELP FOR FAMILIES

- Schools put in place financial hardship arrangements to support families who cannot pay for items or activities so that their child doesn't miss out.
- Schools have a nominated parent payment contact person(s) that parents can have a confidential discussion with regarding financial hardship arrangements.



SCHOOL PROCESSES

- Schools must obtain school council approval for their parent payment arrangements and publish all requests and communications for each year level on their school website for transparency.

SUNSMART REMINDERS from Mr. Mac

At Wooranna Park we promote being sunsmart in the playground and during physical education sessions year round.

Australia has one of the highest rates of skin cancer in the world due to its strong UV rays, and children are particularly vulnerable. Here's why it's essential:

1. Prevent Skin Cancer

Skin cancer is the most common cancer in Australia, and early sun exposure significantly increases the risk. Educating young students about sun safety can help protect them throughout their lives by reducing their risk of skin cancer later on.

2. Skin Damage Prevention

Unprotected exposure to the sun can cause immediate damage like sunburns and long-term damage like premature aging and skin damage. Teaching kids how to protect their skin early on helps them develop healthy habits to prevent these issues.

3. Building Lifelong Habits

By instilling good sun safety habits from a young age - like wearing sunscreen, seeking shade, wearing protective clothing and avoiding the sun during peak hours - students will carry these habits with them into adulthood.

4. Raising Awareness of UV Index

Australia has a high UV index, which means even on cooler or cloudy days, UV rays can still harm the skin. Educating students about the UV index helps them understand when sun protection is necessary, regardless of the weather.

5. Supporting Health Education

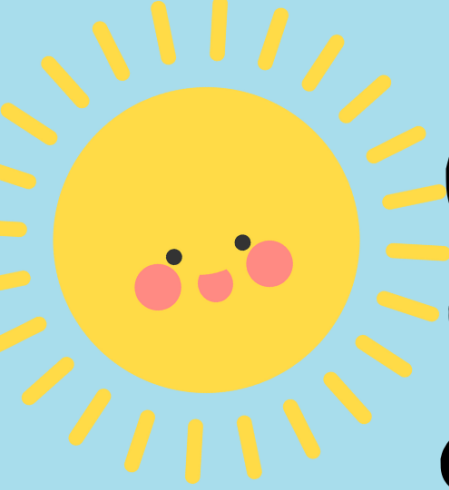
Sun safety education is an important part of a broader health curriculum, teaching students not only how to protect themselves from harmful environmental factors but also the importance of looking after their overall well-being.

Ways to Teach SunSmart Habits:

- **Wear protective clothing** (wide-brimmed hats, long sleeves etc.).
- **Use sunscreen** (SPF 30 or higher) and reapply it regularly.
- **Seek shade** during peak UV times (between 10 am. and 4 pm.).
- **Wear sunglasses** with UV protection when outside.
- **Encourage water breaks** and staying hydrated.

By teaching children to be sunsmart, you help ensure their health and well-being as they grow, equipping them with the knowledge to protect their skin for life.





SUN SAFETY



WEAR A HAT & SUNGLASSES

To ensure that every child has their hat and/or sunglasses when needed, we kindly ask that you encourage your child to leave their sun smart items at school.

This will help us make sure they are always prepared for outdoor activities.



UNIFORM REMINDERS

The wearing of school uniform is compulsory at Wooranna Park Primary School. For our full uniform, please see the school website. All our uniform pieces can be purchased at **PSW, Unit 1, 9-11 South Link, Dandenong South, 3157**



Orange Short Sleeve
Polo Shirts



Navy Blue
Windcheater



Navy Blue
Bomber Jacket



Summer Dress



Navy Blue tracksuit
pants/full length
leggings No Jeans



Navy Blue Rugby or
Gaberdine Shorts/Skort



Navy Blue Hat



Orange Long Sleeve
Polo Shirt



Socks –
White, Black, Navy



Sport Shoes or Black Shoes



Gloves and Scarves
(White, Black, Navy)

The following items are not permitted as a part of our uniform:

Jewellery



Long Earrings



Nail Polish



Make-Up



Please clearly label all clothing items including shoes.

IMPORTANT DETAILS

CURRICULUM DAYS

The last day of Term Four is **Friday 19 December**.



School finishes at **1:30pm**.

COMMUNICATION

Wooranna Park Primary School recognises the importance of the partnership between schools and families to support student learning, engagement and wellbeing.

Your child's teacher will offer you a range of opportunities to communicate with them including:

- ✓ XUNO
- ✓ School diary
- ✓ Formal meetings
- ✓ Before/After school chats

XUNO

If you do not have access to XUNO please contact our school Office and find out how you can obtain it as XUNO will be used several times each week so we want everyone to have access.



FACEBOOK

Please like our [Facebook page](#). This page will be used by the school to inform families and the public of events and updates at the school. Feedback and discussion with parents/carers are welcome, but the school will not use Facebook for this purpose.

Please contact the school directly if you wish to discuss matters, as per our communication process. Only this [Facebook page](#) is endorsed by the Principal. Any other Facebook pages are not officially authorised representatives of the school.



CONTACT DETAILS

It is very important the school has your most current emergency contact telephone details, home and e-mail address.

If you change telephone details or home and e-mail address at any point, we ask that you update the school with your accurate contact details as soon as possible.

بسیار مهم است شماره تماس اضطراری و آدرس دقیق خانه شما را ما در مکتب داشته باشیم

اگر شما شماره تلفون یا آدرس خود را تغییر میدهید لطفن هر چه زودتر مکتب را اطلاع دهید



STUDENT SUPERVISION

Please note that our school grounds are supervised by school staff at the following times:

- Before school from 8:30am to 9am
- Throughout recess and lunch
- After school from 3:30pm to 3:45pm.

Our gates are locked each afternoon at 3:45pm. Students in the school grounds after this time will be cared for at [DS Sports](#) at the family's expense.

The school grounds are not supervised outside of the above times.

It is important that families understand that the park, opposite the school, is not supervised by staff before or after school.

While some families use this area as a meeting place, please know children must be supervised by an adult, as per the Greater Dandenong Council's direction.



BREAKFAST CLUB



Breakfast is available for all students from 8:15am.

MORE IMPORTANT DETAILS

OUT OF HOURS SCHOOL CARE



DS Sports will be providing Outside School Hours Care at Wooranna Park Primary School from 3.30pm to 6pm, every afternoon, Monday to Friday.

DS Sports provides an adventurous and stimulating After School Care program, in a safe and inclusive environment.

DS zones are a place for growth and nurture the building of life-time skills. Our zones incorporate Health, Play, Leisure, Language, Real Life Connections and promotes the building of positive relationships with peers and our staff.

All families are strongly encouraged to register their child/ren for DS Sports as it is free to enrol and while you are under no obligation to use this service it does provide support for you in the event of an emergency. For information about this program, please contact this service directly at:

<https://www.dssports.org/wooranna-park-primary>

MOBILE DEVICES

In line with the Department of Education's [Mobile Phone policy](#), all phones brought to school must be switched off and stored securely in the front Office, during the school day.

A **mobile phone** is a telephone with access to a cellular (telecommunication) system, with or without a physical connection to a network. For the purpose of this policy, "mobile phone" refers to **mobile phones and any device** that may connect to or have a similar functionality to a mobile phone such as a smartwatch.

When a student is not complying with this mobile phone policy, we will be required to follow a process in accordance with our existing student engagement policies.



LUNCH ORDERS

Subway lunch orders are available each Friday. There is a pre-ordering system and orders must be placed via XUNO **by 4pm each Tuesday** for the Friday's lunch.

Late orders cannot be accepted.



Subway \$6

View

SAFETY

All bike and scooter riders are required to wear a bike helmet in Victoria.

Approved helmets have the Australian Standards Mark TM (AS/NZS 2063) and will be marked as suitable for cycling.

Children under the age of 12 may ride on footpaths, as can a supervising adult. They are required to give way to pedestrians and to wheel their bicycles over pedestrian and children's crossings.

Also, by law everyone must wear a seat belt when travelling in a car in Australia



SUNSMART



For Term One and Four, we wear our named, broad brimmed, navy blue hat at all times when outside.

PROTECT

Everyone has the right to be safe and be protected from abuse.

No one should behave in a way that makes you feel unsafe or afraid, including anyone in your family, anyone at school or anywhere else in the community.

Tell a teacher or any adult at your school if you feel unsafe.



It's everyone's responsibility.

Adults at school must listen and respond to concerns about child abuse.

If you suspect abuse of any child or young person, you have a responsibility to report it, even if you are not sure.

Further information & resources
www.education.vic.gov.au/protect

Term 4 2025



Keep this handy calendar on your fridge for upcoming events at school. Check XUNO, visit [our website](#), or follow our [Facebook page](#) as this calendar is subject to changes.



October

November

December

Monday	Tuesday	Wednesday	Thursday	Friday
06 First day of Term Four Don't forget your school, sun smart hat!	07	08 NRL Training (Elected 5/6 Students)	09 First Aid Incursion (All students)	10 Gala Day (5/6s) Whole School Assembly @ 2:40pm
13 DS SPORTS	14 Have you enrolled your child/ren in after school care? You never know when you may need DS Sports!	15 Melb. Victory Cup (Elected 5/6 Students)	16	17 Fairy Bread today for \$1!
20	21 NRL Training (Elected 5/6 Students) School Council @ 6pm	22	23 Student Advisory Forum (Elected Leaders)	24 Bring along \$2.50 for a sausage! Whole School Colour Run @ 2:40pm
27 Swimming closes today! Curriculum Day No students at school	28 Subway orders are due by 4pm each Tuesday, ready for a Friday lunch.	29	30 NRL Carnival (Elected 5/6 Students)	31 Dress like a teacher day! #1 PRINCIPAL for the Day (Elected Students)
03	04 Melbourne Cup Day - No School	05	06	07 Whole School Assembly @ 2:40pm
Swimming Program (4 days)				
10	11 Dental Van onsite	12	13 2025 Prep Transition (2:30-3:15pm)	14 Zooper Doopers today for \$1!
17	18	19	20 2025 Prep Transition (2:30-3:15pm) Waste Wise Incursion (3/4s)	21 STEM Camp @ Lyndale SC (5s) Whole School Assembly @ 2:40pm
24	25 School Council @ 6pm	26 Student Transition Forum (Selected Yr 6 students only)	27 2025 Prep Transition (2:30-3:15pm)	28 Zooper Doopers today for \$1!
01 Japanese Summer Festival @ 3:30 till 4:45pm	02 Community Helper Morning Tea @ 10:50am	03	04 2025 Prep Transition (Dari speaking families 2:30-3:15pm)	05 Farm Excursion (1/2s) Team Time @ 2:40pm
08 2026 House Leader Elections	09 Year 6 > 7 State Transition Day Meet your 2026 Teacher!	10 Grade Six Graduation	11 Christmas Stall Bring along spending money and a shopping bag!	12 Zooper Doopers today for \$1!
15 Whole School Novelty Sports Carnival (Wear your House Colours)	16	17 Class End of Year Parties Year 5/6 Big Day Out Student reports available on XUNO	18	19 Golden Assembly @ 9:50am Last Day of Term 1:30pm finish



Download the **XUNO Family app** from Google Play or iOS app store to receive notifications to your phone of upcoming events, and notices!

9795 2007
www.woorannaparkps.vic.edu.au





Shalimar Park Pre School 2026 Timetable

Mon and Tues: 3 year old 8.45am-4.15pm
4 year old 8.15am-3.45pm

Wed, Thurs and Fri: 3 year old 8.30am-1.30pm
4 year old 9.30am-2.30pm
15 hours=\$0.00



Contact Us >>>



Our Location
1 Milan court,
Dandenong Nth



Visit Our Website
<https://shalimarparkpreschool.godaddysites.com>