

Wooranna Park's Wonderings



Friday 5 December 2025

Hi everyone,

On a following page is the learning structure for Wooranna Park PS for 2026. A huge amount of time and effort has gone into trying to meet the needs of our students, staff and families all with the aim of trying to set every student up for success in the 2026 school year, with both confidence and enthusiasm. If your child is concerned by their placement, which they will find out on **Tuesday 9 December**, you can help us by building your child/ren's resilience with some positive talk about the importance of developing friendships and working relationships with new people and that 'in life we don't always get what we want'.

With so many factors we have had to consider to make these grades balanced, we have aimed to provide your child with at least one nominated friend. If your child is in a grade with more than one nominated friend then that is good luck and not by design. It is important to respect that we will not be taking further requests, as at this late stage of the process any changes affect other students as well. I would like to thank those families who refrained from nominating a specific teacher or listing their child's friends and instead gave us guidance as to the type of teacher they believed would best suit their child. This approach made our job a lot easier. To those who identified a specific teacher, we took no notice due to the fact that this makes the process far too difficult. If by chance you did this and ended with the 'teacher of your choice' then you can consider that pure luck.

You will notice that we have some shared grades, almost one in each year level. As I am sure you can appreciate, teachers are the same as most other people in the workforce in that they are entitled to work in a part time capacity. This is common practice in most schools and here at Wooranna Park. In these situations, teachers communicate regularly to plan the learning program as well as establish shared classroom routines and practices. In most of these arrangements these teachers are well known by our community, therefore teachers in these classes are very experienced and have been teaching at Wooranna Park for a significant time so they are aware of our school processes. Most have successfully shared a grade previously and all have solid communication protocols.

You will notice some familiar names are missing including **Brian Macmillen** who is retiring at the end of this year. **Liz Hodder and Georgia Clark** will also each be pursuing new oppourtunities in 2026. As such we are looking forward to welcoming **Molly Howard** and a new **P.E. teacher** who we are currently working through a recruitment process for Wooranna Park Primary School.

I look forward to everyone being 'as happy as can be' come the evening of Tuesday 9 December because the effort we have put into this process has been thorough, inclusive and has met all your needs! We also wish all the best to our Years Six's as they head off on their transition day on **Tuesday 9 December**, getting to spend the day at their secondary school!

2026 LEARNING COMMUNITY

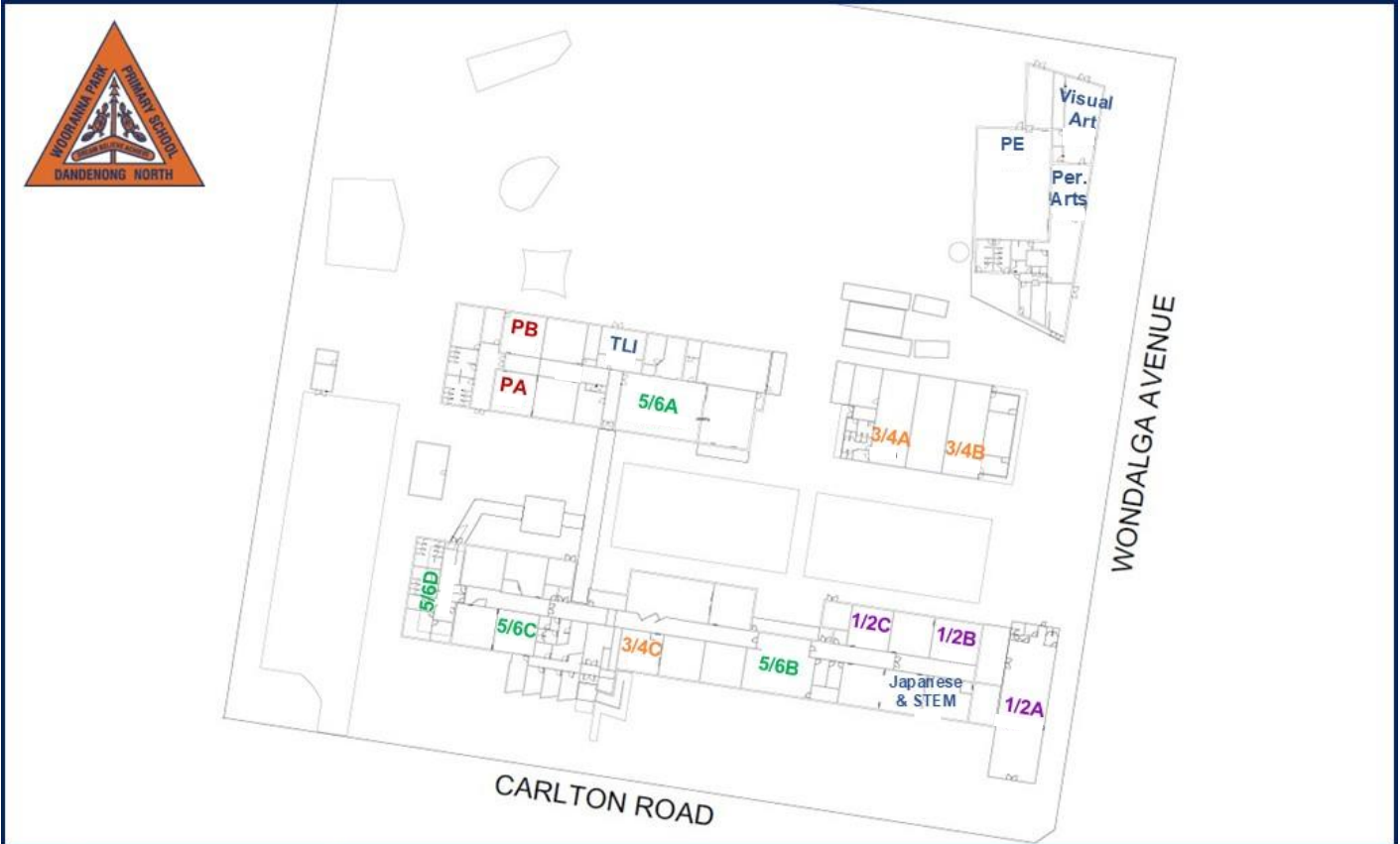
Teachers	
Prep	Bec Kofler
	Annie Praveen
	Kim Campbell
1/2	Jess Marson / Sapna Vats
	Giselle Karaan
	Vicki Ross
3/4	Dan Alexander
	Gina Vongue
	Laurel Heisman / Emma Doyle
5/6	Kate O'Donnell
	Molly Howard
	Gill Thomson-Cook / Sarah Crawford

Leadership	
Becki Kinsella	Inclusion Leader
Megan van der Velden	Learning Specialist
Emma Doyle	Leading Teacher
Sue Bitzios	Business Manager
Rachael Rydqvist	Assistant Principal
Amanda Ellaby	Principal

Specialists	
Alexander Twieg	Japanese / STEM
TBC	Physical Education
Lizzie Moroney	Visual Arts
Megan van der Velden	Performing Arts

Acceleration	
TBC	Tutoring
Annette Hansen	Leadership release
Megan van der Velden	Leadership release (Fri, for Term Only only)

Education Support	
Classroom	Administration
Alice Avraam	Lyn Mitsios
Andjela Prostran	Allison Esmonde
Hayley Alman	Ness Moodie
Helen Overmars	
Michelle Price	
Nicole Zerella	
Priya Potluri	
Nayyab Hamza	
Rita Estrada	
Sahar Fatima	
Suraya Yawari	
Tanja Supljeglav	
Victor Jeffry	
	Occupational Therapist
	Courtney Graf (F)



Whole School Athletics Carnival

Our grade 5/6 students have been doing a great job preparing to lead our whole school athletics day planned for Monday 15 December. All students will be involved in a series of novelty sports stations, on school grounds and at the tennis courts.



To build our community spirit we are encouraging all children to come in their team colours. We recognise that many children do not yet know their team colour so stay tuned for a specific communication on that. For your reference, siblings will share the same team so the colour t-shirts can be handed down.

To ensure every student has the best day possible we ask that they wear comfortable running shoes, a SunSmart hat and a drink bottle filled with water. For their safety, please ensure you have applied suncream in the morning.

Feel free to come along for the whole or some part of the day to cheer your team on. Let's hope the weather is just perfect so that we can enjoy a wonderful day together!

End of Year Student Reports

Your child's end of year report will be uploaded to XUNO next Wednesday 17 December. You will be able to download your child's report from XUNO, as well as access their June reports. Please make sure you are [accessing XUNO](#) following the instruction located on our website.

Parent Payments for 2026

Wooranna Park Primary School is looking forward to another great year of learning and teaching and would like to advise you of the voluntary financial contributions schedule for 2026.



Schools provide students with free instruction to fulfil the standard curriculum requirements and we want to assure you that all contributions are voluntary. Your ongoing financial support ensures that our school can enhance the learning experiences beyond the mandated curriculum.

We want to thank you for all your support, whether that is through your voluntary contributions, fundraising or volunteering your time. This has made a difference to our school and the programs we can offer.

Within our school, your financial support has enabled us to offer special curriculum experiences additional resources for learning oppournities, as well as school buildings and ground maintenance and enhancements.

Please refer to the [Parent Contribution Arrangements for 2026](#), either on the following pages or via [our website](#), which includes an overview of the Department of Education's Parent Payment Policy for further details.

In 2025, all classroom supplies will be provided directly to the classrooms in bulk. Teachers will distribute stationery and other supplies to the students as needed.

Online payments can be made via XUNO (Events and Fees) from **21 January 2026** or alternatively the school will be open as of **27 January 2026** to receive parent contributions.

Last Subway Lunch for the Year

The last Subway lunch orders for the year will be available on **Friday 12 December**. Orders must be placed via XUNO **by 4pm by Tuesday 9 December** for the Friday's lunch.

Late orders cannot be accepted.

School Supervision Hours

Please note that our school grounds are supervised by school staff at the following times:

- Before school from 8:30am to 8:50am
- Throughout recess and lunch
- After school from 3:30pm to 3:45pm.

Students arriving prior to 8:30am must remain in Breakfast Club, regardless of if they eating breakfast or not.

The school grounds are not supervised outside of the above times.

I would also like to share that the park, opposite the school, is not supervised by staff before or after school. While I respect that some families use this area as a meeting place, it is important to understand that children must be supervised by an adult, in this Council area.

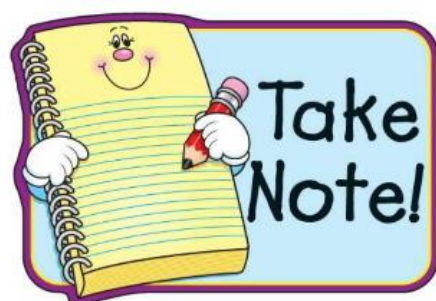


Mobile Phones in Government Schools

In line with the Department of Education's [Mobile Phone policy](#), all phones brought to school must be switched off and stored securely in the front Office, during the school day.

A *mobile phone* is a telephone with access to a cellular (telecommunication) system, with or without a physical connection to a network. For the purpose of this policy, "mobile phone" refers to *mobile phones and any device* that may connect to or have a similar functionality to a mobile phone such as a smartwatch.

We would appreciate your support in reminding your child to sign their phone in at the office at the beginning of the school day. When a student is not complying with this mobile phone policy, we will be required to follow a process in accordance with our existing student engagement policies.



Please take note that **Friday 19 December** is last day of the school year. Students will be **dismissed at 1:30pm** so you will need to plan for this earlier time.

Kind regards,
Amanda Ellaby
Executive Principal

Library Update

From **Monday 1 December**, library borrowing will temporarily cease to allow us to conduct our stocktake. We kindly ask that all borrowed books be returned ASAP.

We appreciate your understanding and cooperation as we take this time to ensure our library inventory is updated ready for more literary adventures next year!



👀👀 **Let's Look for Books!** 👀👀

**Look behind doors, under beds and in sock drawers for any
Wooranna Park Primary School library
and take home books.**

**It is the time of year where we need to return all of the
books that have been brought home from the library, in
our pouches and from our classroom book boxes.**





NOVELTY SPORTS CARNIVAL

Monday 15 December

STUDENTS ARE WELCOME TO WEAR THEIR TEAM
COLOURS AND WILL REQUIRE A SUNSMART HAT,
SPF50+ SUNSCREEN AND DRINK BOTTLE.

VOLUNTARY FINANCIAL CONTRIBUTIONS FOR 2026



November 2025

Dear Parents/Carers,

Wooranna Park Primary School is looking forward to another wonderful year of learning and teaching in 2026. We are writing to share our Voluntary Financial Contributions Schedule for the upcoming school year.

As always, we remain committed to providing free instruction to all students to meet the standard curriculum requirements set by the Department of Education. We would like to emphasise that all contributions are strictly voluntary.

Your ongoing support—whether through voluntary contributions, fundraising or the generous donation of your time—makes a significant difference to the opportunities we can offer our students. Thanks to your contributions, we have been able to:

- Enhance the learning experience with special curriculum programs
- Provide additional learning resources
- Maintain and improve our school buildings and grounds

In 2026, all classroom supplies will be provided in bulk and delivered directly to classrooms. Teachers will distribute stationery and other materials to students as needed throughout the year.

For more details about the Department's Parent Payments Policy, please see the one-page overview attached.

We truly appreciate your continued support. Together, we can ensure that Wooranna Park Primary School remains a vibrant, engaging and supportive place for all learners.

Please find attached our 2026 Voluntary Financial Contributions Schedule outlining the breakdown for each area. Online payments can be made via XUNO from **21 January 2026** or alternatively the school will be open as of **27 January 2026** to receive parent contributions.

Amanda Ellaby
Executive Principal

Rob Trotter
School Council President



2026 VOLUNTARY FINANCIAL CONTRIBUTIONS SCHEDULE

ITEM	Annual Amount per STUDENT
CURRICULUM CONTRIBUTIONS <ul style="list-style-type: none"> Classroom consumables, materials and equipment 2026 Wooranna Park Student Diary Printing and photocopying of learning materials Digital Learning: <ul style="list-style-type: none"> Essential Assessment – Literacy & Numeracy Sunshine Online Times Table Rock Stars 	\$80
OTHER CONTRIBUTIONS <ul style="list-style-type: none"> ICT Devices School grounds maintenance & improvements 	\$35 \$25
TAX DEDUCTIBLE CONTRIBUTIONS (per family) <ul style="list-style-type: none"> Building Fund (Suggested amount \$25.00) 	(Parent/Carer to complete) \$_____
EXTRA-CURRICULAR ITEMS AND ACTIVITIES <ul style="list-style-type: none"> Grade 5/6 Interschool Sports Program (CSEF/SSB can be allocated, if eligible) 	(Parent/Carer to complete) \$50

FAMILY SURNAME: _____ **FAMILY ID:** _____ (Office use only)

Student(s) first name(s): _____

STUDENT SURNAME(S) (if different): _____

ITEM	Item Amount	Number of students in your family	Annual Amount per FAMILY
Curriculum Contributions			\$
Other Contributions			\$
Tax Deductible Contributions (Parent/Carer to complete)			\$
Extra-Curricular Items and Activities CSEF/SSB - YES / NO (Parent/Carer to complete)			\$
TOTAL FAMILY CONTRIBUTION (XUNO - EFT) (Parent/Carer to complete)			\$



Curriculum Contributions

Items and activities that students use, or participate in, to access the curriculum include:

- Everyday items that your child/ren will use in the classroom for the essential curriculum such as art supplies, science equipment, cooking ingredients and technology materials.
- Computer applications where our students have their own individual password.

Other Contributions

Non-curriculum items and activities to support the daily operation and objectives of Wooranna Park Primary School.

Tax Deductible Contributions

Building Fund tax deductible contributions to Wooranna Park Primary School support renovations, upgrades and maintenance of school infrastructure.

Extra-Curricular (OPTIONAL) Items and Activities

Wooranna Park Primary School offers a range of items and activities that enhance or broaden the schooling experience of students beyond what the school provides to deliver the curriculum. These are provided on a user-pays basis. Details of these items and activities will be provided to students and families throughout the year, such as camps, incursions and excursions.

Educational Items for Students to own

All classroom supplies will be provided directly to the classrooms in bulk, where teachers will distribute stationery and other supplies to the students as needed.

Financial Support for Families

Wooranna Park Primary School understands that some families may experience financial difficulty and offers a range of support options, including:

- State Schools' Relief provides support such as new school uniforms, shoes and more for disadvantaged families. Applications are submitted by the school.
- Camps, Sports and Excursions Fund (CSEF) provides payments for eligible families to assist students to attend camps, sporting events and excursions. Application forms will be available at the office as of **27 January 2026** for new families or newly eligible families with a current Health Care Card. Parents/carers who currently receive CSEF, and who remain eligible, will automatically have their 2026 application processed by the school. For all applications, we will require a copy of your current Health Care Card.

For a confidential discussion about accessing these services, or if you would like to discuss alternative payment arrangements, please contact our Business Manager, Sue Bitzios on 9795 2007 or sue.bitzios@education.vic.gov.au. Any information about your financial circumstances, payment arrangements or status will be kept strictly confidential.

Payment Methods

We will be accepting online payments via **XUNO** (Events and Fees) from **21 January 2026**.

Alternatively, Wooranna Park Primary School will be open as of **27 January 2026** to receive parent contributions at the office via **EFTPOS**.

Refunds

Parent/carer requests for refunds are subject to the discretion of the school and made on a case-by-case basis. Refunds will be provided where the school deems it is reasonable and fair to do so, taking into consideration whether a cost has been incurred, the Department's Parent Payment Policy and Guidance, Financial Help for Families Policy and any other relevant information.

PARENT PAYMENTS POLICY ONE PAGE OVERVIEW



FREE INSTRUCTION

- Schools provide students with free instruction and ensure students have free access to all items, activities and services that are used by the school to fulfil the standard curriculum requirements in Victorian Curriculum F-10, VCE and VCAL.
- Schools may invite parents to make a financial contribution to support the school.



PARENT PAYMENT REQUESTS

Schools can request contributions from parents under three categories:

Curriculum Contributions

Voluntary financial contributions for curriculum items and activities which the school deems necessary for students to learn the Curriculum.

Other Contributions

Voluntary financial contributions for non-curriculum items and activities that relate to the school's functions and objectives.

Extra-Curricular Items and Activities

Items and activities that enhance or broaden the schooling experience of students and are above and beyond what the school provides for free to deliver the Curriculum. These are provided on a user-pays basis.

- Schools may also invite parents to supply or purchase educational items to use and own (e.g. textbooks, stationery, digital devices).



FINANCIAL HELP FOR FAMILIES

- Schools put in place financial hardship arrangements to support families who cannot pay for items or activities so that their child doesn't miss out.
- Schools have a nominated parent payment contact person(s) that parents can have a confidential discussion with regarding financial hardship arrangements.



SCHOOL PROCESSES

- Schools must obtain school council approval for their parent payment arrangements and publish all requests and communications for each year level on their school website for transparency.

FUNDRAISING NEWS



We are looking for volunteers to donate some of their time to help with the running of our very popular Christmas stall.

If you are free on **Wednesday 10 December from 2:30m till 3:30pm**, we would love your help to set up the stall ready for sales on Thursday.

We would appreciate your help at the stall on **Thursday 11 December**, either from 9am till 1:30pm or in the afternoon from 2:20pm till 4pm.

While you are creating a special occasion for our students, you will also have some fun socializing with our community.

<https://forms.gle/JaEpfKG3MnWEJsz49>

SUNSMART REMINDERS from Mr. Mac

At Wooranna Park we promote being sunsmart in the playground and during physical education sessions year round.

Australia has one of the highest rates of skin cancer in the world due to its strong UV rays, and children are particularly vulnerable. Here's why it's essential:

1. Prevent Skin Cancer

Skin cancer is the most common cancer in Australia, and early sun exposure significantly increases the risk. Educating young students about sun safety can help protect them throughout their lives by reducing their risk of skin cancer later on.

2. Skin Damage Prevention

Unprotected exposure to the sun can cause immediate damage like sunburns and long-term damage like premature aging and skin damage. Teaching kids how to protect their skin early on helps them develop healthy habits to prevent these issues.

3. Building Lifelong Habits

By instilling good sun safety habits from a young age - like wearing sunscreen, seeking shade, wearing protective clothing and avoiding the sun during peak hours - students will carry these habits with them into adulthood.

4. Raising Awareness of UV Index

Australia has a high UV index, which means even on cooler or cloudy days, UV rays can still harm the skin. Educating students about the UV index helps them understand when sun protection is necessary, regardless of the weather.

5. Supporting Health Education

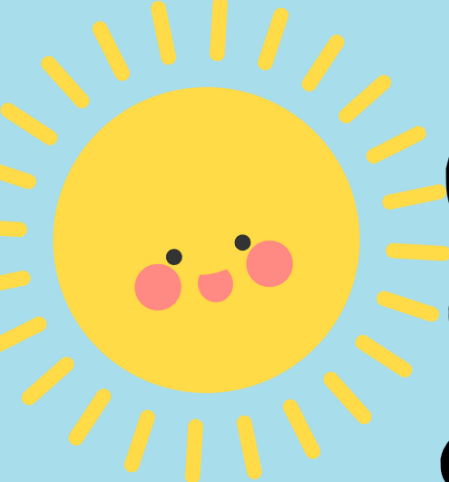
Sun safety education is an important part of a broader health curriculum, teaching students not only how to protect themselves from harmful environmental factors but also the importance of looking after their overall well-being.

Ways to Teach SunSmart Habits:

- **Wear protective clothing** (wide-brimmed hats, long sleeves etc.).
- **Use sunscreen** (SPF 30 or higher) and reapply it regularly.
- **Seek shade** during peak UV times (between 10 am. and 4 pm.).
- **Wear sunglasses** with UV protection when outside.
- **Encourage water breaks** and staying hydrated.

By teaching children to be sunsmart, you help ensure their health and well-being as they grow, equipping them with the knowledge to protect their skin for life.





SUN SAFETY



WEAR A HAT & SUNGLASSES

To ensure that every child has their hat and/or sunglasses when needed, we kindly ask that you encourage your child to leave their sun smart items at school.

This will help us make sure they are always prepared for outdoor activities.



UNIFORM REMINDERS

The wearing of school uniform is compulsory at Wooranna Park Primary School. For our full uniform, please see the school website. All our uniform pieces can be purchased at **PSW, Unit 1, 9-11 South Link, Dandenong South, 3157**



Orange Short Sleeve
Polo Shirts



Navy Blue
Windcheater



Navy Blue
Bomber Jacket



Summer Dress



Navy Blue tracksuit
pants/full length
leggings No Jeans



Navy Blue Rugby or
Gaberdine Shorts/Skort



Navy Blue Hat



Orange Long Sleeve
Polo Shirt



Socks –
White, Black, Navy



Sport Shoes or Black Shoes



Gloves and Scarves
(White, Black, Navy)

The following items are not permitted as a part of our uniform:

Jewellery



Long Earrings



Nail Polish



Make-Up



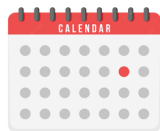
Please clearly label all clothing items including shoes.

IMPORTANT DETAILS

CURRICULUM DAYS

The following days have been endorsed by School Council:

- Monday 25 August
- Monday 27 October



Students do not attend school on these days. [DS Sports](#) will be providing childcare on these days.

On the last day of Terms One, Two and Three we have an early dismissal time of **2:30pm** and on the last day of Term Four we finish at **1:30pm**.

COMMUNICATION

Wooranna Park Primary School recognises the importance of the partnership between schools and families to support student learning, engagement and wellbeing.

Your child's teacher will offer you a range of opportunities to communicate with them including:

- ✓ XUNO
- ✓ School diary
- ✓ Formal meetings
- ✓ Before/After school chats

XUNO

If you do not have access to XUNO please contact our school Office and find out how you can obtain it as XUNO will be used several times each week so we want everyone to have access.



FACEBOOK

Please like our [Facebook page](#). This page will be used by the school to inform families and the public of events and updates at the school. Feedback and discussion with parents/carers are welcome, but the school will not use Facebook for this purpose.

Please contact the school directly if you wish to discuss matters, as per our communication process. Only this [Facebook page](#) is endorsed by the Principal. Any other Facebook pages are not officially authorised representatives of the school.



CONTACT DETAILS

It is very important the school has your most current emergency contact telephone details, home and e-mail address.

If you change telephone details or home and e-mail address at any point, we ask that you update the school with your accurate contact details as soon as possible.

بسیار مهم است شماره تماس اضطراری
و آدرس دقیق خانه شما
را ما در مکتب داشته باشیم

اگر شما شماره تلفن یا آدرس خود را تغییر
میدید لطفاً هر چه
زودتر مکتب را اطلاع دهید



STUDENT SUPERVISION

Please note that our school grounds are supervised by school staff at the following times:

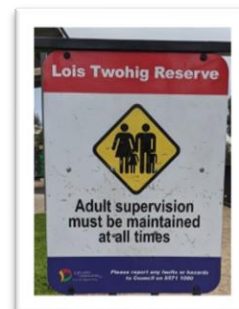
- Before school from 8:30am to 9am
- Throughout recess and lunch
- After school from 3:30pm to 3:45pm.

Our gates are locked each afternoon at 3:45pm. Students in the school grounds after this time will be cared for at [DS Sports](#) at the family's expense.

The school grounds are not supervised outside of the above times.

It is important that families understand that the park, opposite the school, is not supervised by staff before or after school.

While some families use this area as a meeting place, please know children must be supervised by an adult, as per the Greater Dandenong Council's direction.



BREAKFAST CLUB



Breakfast is available for all students from 8:15am.

MORE IMPORTANT DETAILS

OUT OF HOURS SCHOOL CARE



DS Sports will be providing Outside School Hours Care at Wooranna Park Primary School from 3.30pm to 6pm, every afternoon, Monday to Friday.

DS Sports provides an adventurous and stimulating After School Care program, in a safe and inclusive environment.

DS zones are a place for growth and nurture the building of life-time skills. Our zones incorporate Health, Play, Leisure, Language, Real Life Connections and promotes the building of positive relationships with peers and our staff.

All families are strongly encouraged to register their child/ren for DS Sports as it is free to enrol and while you are under no obligation to use this service it does provide support for you in the event of an emergency. For information about this program, please contact this service directly at:

<https://www.dssports.org/wooranna-park-primary>

MOBILE DEVICES

In line with the Department of Education's [Mobile Phone policy](#), all phones brought to school must be switched off and stored securely in the front Office, during the school day.

A **mobile phone** is a telephone with access to a cellular (telecommunication) system, with or without a physical connection to a network. For the purpose of this policy, "mobile phone" refers to **mobile phones and any device** that may connect to or have a similar functionality to a mobile phone such as a smartwatch.

When a student is not complying with this mobile phone policy, we will be required to follow a process in accordance with our existing student engagement policies.



LUNCH ORDERS

Subway lunch orders are available each Friday. There is a pre-ordering system and orders must be placed via XUNO **by 4pm each Tuesday** for the Friday's lunch.

Late orders cannot be accepted.



Subway \$6

View

SAFETY

All bike and scooter riders are required to wear a bike helmet in Victoria.

Approved helmets have the Australian Standards Mark TM (AS/NZS 2063) and will be marked as suitable for cycling.

Children under the age of 12 may ride on footpaths, as can a supervising adult. They are required to give way to pedestrians and to wheel their bicycles over pedestrian and children's crossings.

Also, by law everyone must wear a seat belt when travelling in a car in Australia



SUNSMART



For Term One and Four, we wear our named, broad brimmed, navy blue hat at all times when outside.

PROTECT

Everyone has the right to be safe and be protected from abuse.

No one should behave in a way that makes you feel unsafe or afraid, including anyone in your family, anyone at school or anywhere else in the community.

Tell a teacher or any adult at your school if you feel unsafe.



It's everyone's responsibility.

Adults at school must listen and respond to concerns about child abuse.

If you suspect abuse of any child or young person, you have a responsibility to report it, even if you are not sure.

Further information & resources
www.education.vic.gov.au/protect

Term 4 2025



Keep this handy calendar on your fridge for upcoming events at school. Check XUNO, visit [our website](#), or follow our [Facebook page](#) as this calendar is subject to changes.

	Monday	Tuesday	Wednesday	Thursday	Friday
October	06 First day of Term Four Don't forget your school, sun smart hat!	07	08 NRL Training (Elected 5/6 Students)	09 First Aid Incursion (All students)	10 Gala Day (5/6s)
	13 DS SPORTS Have you enrolled your child/ren in after school care? You never know when you may need DS Sports !	14	15 Melb. Victory Cup (Elected 5/6 Students)	16	17 Fairy Bread today for \$1!
	20 Swimming closes today! Curriculum Day No students at school	21 NRL Training (Elected 5/6 Students) School Council @ 6pm	22	23 Student Advisory Forum (Elected Leaders)	24 Bring along \$2.50 for a sausage! Whole School Colour Run @ 2:40pm
	27 Curriculum Day No students at school	28 Subway orders are due by 4pm each Tuesday, ready for a Friday lunch.	29	30 NRL Carnival (Elected 5/6 Students)	31 Dress like a teacher day! #1 PRINCIPAL for the Day (Elected Students)
November	03	04 Melbourne Cup Day - No School	05	06	07 Whole School Assembly @ 2:40pm
	Swimming Program (4 days)				
	10	11	12	13 2025 Prep Transition (2:30-3:15pm)	14 Zooper Doopers today for \$1!
	Dental Van onsite				
December	17	18	19	20 2025 Prep Transition (2:30-3:15pm) Waste Wise Incursion (3/4s)	21 STEM Camp @ Lyndale SC (5s) Whole School Assembly @ 2:40pm
	24	25 School Council @ 6pm	26 Student Transition Forum (Selected Yr 6 students only)	27 2025 Prep Transition (2:30-3:15pm)	28 Zooper Doopers today for \$1!
	01 Japanese Summer Festival @ 3:30 till 4:45pm	02 Community Helper Morning Tea @ 10:50am	03	04 2025 Prep Transition (Dari speaking families 2:30-3:15pm)	05 Farm Excursion (1/2s) Team Time @ 2:40pm
	08 Whole School Novelty Sports Carnival (Wear your House Colours)	09 Year 6 > 7 State Transition Day Meet your 2026 Teacher! 2026 House Leader Elections	10 Grade Six Graduation	11 Christmas Stall Bring along spending money and a shopping bag!	12 Zooper Doopers today for \$1!
	15	16	17 Class End of Year Parties Year 5/6 Big Day Out Student reports available on XUNO	18	19 Golden Assembly @ 9:50am Last Day of Term 1:30pm finish

XUNO

Download the **XUNO Family app** from Google Play or iOS app store to receive notifications to your phone of upcoming events, and notices!

9795 2007

www.woorannaparkps.vic.edu.au





Shalimar Park Pre School 2026 Timetable

Mon and Tues: 3 year old 8.45am-4.15pm
4 year old 8.15am-3.45pm

Wed, Thurs and Fri: 3 year old 8.30am-1.30pm
4 year old 9.30am-2.30pm
15 hours=\$0.00



Contact Us >>>



Our Location
1 Milan court,
Dandenong Nth



Visit Our Website
<https://shalimarparkpreschool.godaddysites.com>